

HISTORY AND LISTING
OF
TYPE FW METERS
NEW DESIGNATION DC

COMPILED BY

E. S. LAPHAM MSS 14
BOX 185
WADING RIVER, N.Y.

COPYRIGHTED 1951

PUBLISHED BY

THE METER STAMP SOCIETY 1951

TYPE FW METERS

These meters were manufactured by the National Postal Meter Company of Los Angeles and San Francisco, California, which was the successor to the Whitlock Metered Mail Company of Los Angeles. This is the reason why the letter "W" has been used in the type designation. The office of the company was moved to Rochester, New York, in 1940, and it later became a part of the Commercial Controls Corporation of that city.

There are four main types of indicia, as follows: (see cuts)

FWIa - "METER NO.--"	(5 wavy lines in center)
FWIb - "N.P. METER--"	(5 wavy lines in center)
FW2 - "--N.P.M.---"	(4 wavy lines in center)
FW3 - "--N.P.M.---"	(5 wavy lines in center)

On the check list which follows, all numbers through 901 (and 7700) are Type FWIa, unless preceded by "NP" (type FWIb) or by "NPM" (type FW2). All numbers between 901 and 5000 are Type FW2, unless preceded by "M" (type FWIa) or by "NP" (type FWIb). All numbers from 5000 up (except 7700) are type FW3. Meters 870 and 880-901 have larger meter numbers than the usual type FWIa meters, and are sometimes designated as Type FWIc.

The known meter numbers are 42, 101, 225, 452 to 1176, 1500 to 1543, 5000 to 5499, 5600 to 5738 and 5740 to 5753. Machines from 1544 to 1576 and 5754 to 5774 have been manufactured, but have either not been issued or have not been reported in use.

Numbers below 5000 (and 7700) are single denomination machines. They were first put in use about May 1933. The 1500 series was started in 1944 and machines were made as late as January 1949. These single denomination machines are designed by the maker as Model "M" or "P".

Numbers from 5000 up (except 7700) are mostly four-denomination machines (maker's Model B), but a few of them (numbers unknown) are two-denomination combined meters and mailing machines (maker's Model A). These machines were introduced about March 1935. The machines from 5740 up (which have numbers of a different shape) were made in May 1944.

Colors used in this type are designated as follows on the check list:

B. - Blue	O. - Orange
G. - Green	P. - Purple
N. - Brown	R. - Red

All meters have full double circle townmark, unless town name is followed by "(B)", in which case the inner circle is broken, or by "(N)", in which case there is no inner circle. (See 5449)

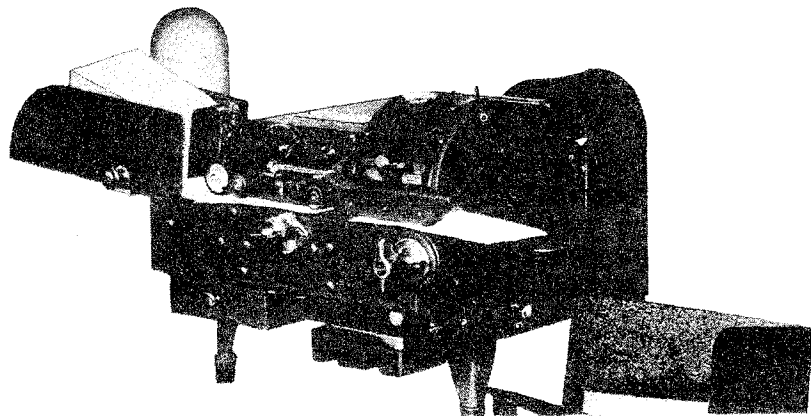
Position of "SEC. 562 P.L. & R." (Listed after denomination)

- A - Above indicia
- D - In townmark, in 3 lines
- DI - Same inverted
- DD - In townmark, in two lines, between lines
- E - Between Townmark circles
- AD - Types A and D both on the same copy

On this check list, all towns names are written out exactly as they appear in townmarks, except that Los Angeles, California, is abbreviated "L.A.", San Francisco, California, is abbreviated "S.F." and New York, N.Y. is abbreviated "N.Y." Under each number, items are listed in order of use as far as possible. To save space, all colors are listed together where possible.

Thanks are due to the Commercial Controls Corporation, and to the many leading collectors who submitted lists and information, without whose support the preparation of this check list would have been impossible.

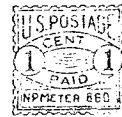
Please report additions to E. S. Lapham, Box 185, Wading River, New York.



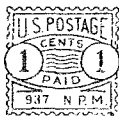
Type 1a



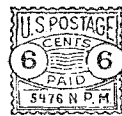
Type 1b



Type 2



Type 3



TYPE FW METERS

42	Indianapolis, Ind.	1D P	495	Sacramento, Calif.	3 R
42	Chicago, Ill.	1E P	495	Glendale, Calif	3 R
NFM101	" "	1½ R	495	Atlanta, Ga.	3 R
NFM101	N.Y.	1½ R	496	Portland, Ore.	3 R-P
225	S.F.	2 R	496	L.A.	3 R
452	S.F.	3 R	497	S.F.	3 R
452	L.A.	3 R	497	L.A.	3 R
453	L.A.	3 N	497	Long Beach, Calif.	3 R
454	L.A.	2 R-P	497	Monrovia, Calif. (B)	3 R
457	S.F.	3 R	498	Berkeley, Calif.	3 R
458	Sacramento, Calif.	3 R	499	S.F.	3 R
459	S.F.	3 R	499	L.A.	3 R
460	L.A.	3 R	499	San Gabriel, Calif.	3 R
461	San Bernardino, Calif.	3 R	500	L.A.	1 P
461	Long Beach, Calif.	3 R	500	S.F.	1E R
461	Pasadena, Calif.	3 B	500	Waterbury, Conn.	1E R
462	" "	3 R	501	Sacramento, Calif.	1½ O-R
463	S.F.	3 R	501	S.F.	1½ R
464	S.F.	3 P	502	Beverly Hills, Calif.	1 P-R
464	Chester, Pa.	3 R	502	L.A.	1D 1E R
464	Rochester, N.Y.	3 G	503	Oakland, Calif.	1 R
465	S.F.	3 R	503	S.F.	1 R
465	West Chester, Pa.	3 R	505	S.F.	3 R
465	Kansas City, Mo.	3 R	506	L.A.	2 P-R
466	L.A.	2 R	506	San Fernando, Calif.	2 R
466	Burbank, Calif.	2 R	507	L.A.	2 R
466	Long Beach, Calif.	2 R	508	L.A.	2 R
467	S.F.	2 R	510	S.F.	2 R
468	S.F.	2 R	511	S.F.	2 R
469	L.A.	2 R	512	Oakland, Calif.	2 R
470	S.F.	2 R	512	San Gabriel, Calif.	2 R
470	Pasadena, Calif.	2 R	513	S.F.	2 R
472	S.F.	2 R	514	L.A.	2 R
472	Santa Monica, Calif.	2 R	515	S.F.	2 R
472	Hollywood, Calif.	2 R	516	S.F.	2 R
473	S.F.	2 R	517	S.F.	2 R
474	L.A.	2 R	518	S.F.	2 R
474	N.Y.	2 R	519	L.A.	2 R
475	L.A.	2 R	520	S.F.	3 R
486	S.F.	3 R	520	Saint Louis, Mo.	3 R
486	San Jose, Calif.	3 R	520	Ardmore, Pa.	3 R
486	L.A.	3 R	523	S.F.	1½ N
487	Beverly Hills, Calif.	3 R	523	Kansas City, Mo.	1½ R
488	Oakland, Calif.	3 R	524	L.A.	3 R
488	Norristown, Pa.	3 R	524	Glendale, Calif.	3 R
489	S.F.	3 R	525	S.F.	3 R
489	Oakland, Calif.	3 R	525	L.A.	3 R
489	L.A.	3 R-P	526	Santa Monica, Calif.	3 R
489	N.Y.	3 R	NP526	San Diego, Calif.	3 R
489	Chicago, Ill.	3 R	527	S.F.	3 R
489	South Pasadena, Calif.	3 R	528	Sacramento, Calif.	3 R
490	S.F.	3 R	528	Oakland, Calif.	3 R
491	S.F.	3 R	529	Berkeley, Calif.	3 R
492	S.F.	3 R	530	S.F.	3 R
493	S.F.	3 R	531	L.A.	3 R
494	L.A.	3 R	532	S.F.	3 R
494	Portland, Ore.	3 R-P	533	S.F.	3 R
494	North Hollywood, Calif.	3 R	533	Philadelphia, Pa.	3 R

533	Norristown, Pa.	3 R	572	Kansas City, Mo.	3 R
534	L.A.	3 R	573	L.A.	3 N
535	S.F.	3 R	574	S.F.	3 R
535	Van Nuys, Calif.	3 R	574	L.A.	3 R
536	L.A.	3 R	574	Long Beach, Calif.	3 R
537	S.F.	3 R	574	San Bernardino, Calif.	3 R
538	S.F.	3 R	575	Sacramento, Calif.	3 R
539	S.F.	3 R	575	Santa Barbara, Calif.	3 R
539	Sacramento, Calif.	3 R	575	L.A.	3 R
539	L.A.	3 R	575	Compton, Calif.	3 R
539	Monterey Park, Calif.	3 R	575	Chicago, Ill. (B)	3 R
540	L.A.	3 R	576	Sacramento, Calif.	3 R
541	L.A.	3 R	576	L.A.	3 R
542	L.A.	2 R	577	S.F.	3 R
543	S.F.	3 R	579	L.A.	2 R-N
543	L.A.	3 R	580	S.F.	2 R
544	L.A.	3 R	580	Seattle, Wash.	2 R
545	L.A.	3 R	581	L.A.	2 R
546	Portland, Ore.	3 R	582	Minneapolis, Minn.	2 R
546	Whittier, Calif.	3 R	583	S.F.	2 R
546	Altadena, Calif.	3 R	584	S.F.	2 R
546	L.A.	3 R	584	L.A.	2 R
547	Sacramento, Calif.	3 R	585	L.A.	2 R-P
547	N.Y.	3 R	586	L.A.	2 R
547	Atlanta, Ga.	3 R	586	Pasadena, Calif.	2 R
548	L.A.	3 P	587	Chicago, Ill.	2 R-P
549	L.A.	2 R	588	L.A.	2 R
550	S.F.	2 R	589	S.F.	2 R
551	S.F.	2 R	589	San Bernardino, Calif.	2 R
551	L.A.	2 R	589	Hollywood Sta., L.A.	2 R
552	S.F.	2 R	590	L.A.	1A P
553	S.F.	2 R	590	Waterbury, Conn.	1D 1E R
553	Long Island City, N.Y.	2 R	590	N.Y.	1E R
554	S.F.	2 R	591	S.F.	1A P
555	Santa Monica, Calif.	2 R	591	S.F.	1E R
555	L.A.	2 R	592	L.A.	2 R
555	Hollywood Sta., L.A.	2 R	593	S.F.	2 R
556	Glendale, Calif.	2 R	593	L.A.	2 R
556	Chicago, Ill.	2 R	593	Alhambra, Calif.	2 R
557	L.A.	2 R	594	L.A.	2 R
558	S.F.	2 R	595	L.A.	2 R
558	Long Beach, Calif.	2 R	596	S.F.	2 R
559	L.A.	2 R	598	S.F.	2 R
560	L.A.	2 R	599	S.F.	2 R
561	N.Y.	1½ R	599	Huntington Park, Calif.	2 R
561	Elmsford, N.Y.	1½ R	599	San Bernardino, Calif.	2 R
562	L.A.	1½ R	600	S.F.	2 R
563	L.A.	1½ P-N	600	Philadelphia, Penna.	2 R
564	S.F.	1½ R	601	L.A.	2 R
565	S.F.	1½ P	601	Chicago, Ill.	2 R
565	L.A.	1½ R	602	L.A.	2 R
566	L.A.	1A 1E P	602	S.F.	2 R
566	N.Y.	1 1E P	602	San Jose, Calif.	2 R
566	N.Y.	1E G	603	L.A.	2 R
568	Portland, Ore.	1½ R	604	L.A.	2 R
570	S.F.	1 N	605	L.A.	2 R
570	Phoenix, Ariz.	1 R	606	S.F.	2 R
570	Chicago, Ill.	1 P	606	L.A.	2 R
570	" "	1E R	607	S.F.	3 R
571	L.A.	1A N-R	607	L.A.	3 R

608	Terminal Island, Calif.	3 R	644	S.F.	2 R
NP608	N.Y.	3 P	646	L.A.	2 R
NP608	L.A.	3 R	647	L.A.	2 R
609	L.A.	3 R	647	S.F.	2 R
609	Long Beach, Calif.	3 R	649	L.A.	2 R
610	S.F.	3 R	650	L.A.	2 R
610	Atlanta, Ga.	3 R	651	Long Beach, Calif.	2 R
610	Jenkintown, Pa.	3 R	651	S.F.	2 R
610	Chicago, Ill.	3 R	652	Pottstown, Pa.	2 R
611	S.F.	3 R	653	S.F.	2 R
611	San Bernardino, Calif.	3 R	653	Chicago, Ill.	2 R
612	Pasadena, Calif.	3 R	654	L.A.	2 R
613	L.A.	3 P	654	L.A.	1D P
615	L.A.	3 R	654	N.Y.	1D R
616	L.A.	3 R	654	New Haven, Conn.	1D 1E P
616	Long Beach, Calif.	3 R	654	Boston, Mass	1 1E P
617	L.A.	3 R	655	Beverly Hills, Calif	1 R
618	L.A.	3 R	655	N.Y.	1E R
619	Santa Ana, Calif.	3 R	656	N.Y.	1D R
619	Compton, Calif.	3 R	656	Elmsford, N.Y.	1D 1E R
619	Pasadena, Calif.	3 R	657	L.A.	1½ P
620	L.A.	3 R	658	Terminal Island, Calif.	1½ N
620	Hollywood Sta., L.A.	3 R	659	L.A.	1A P
620	Hollywood, Calif.	3 R	659	N.Y.	1D 1E R
621	Portland, Ore.	3 R-P	660	L.A.	1 P
621	L.A.	3 R	660	N.Y.	1D R
621	Coatesville, Pa.	3 R	660	Waterbury, Conn.	1E R
622	L.A.	3 R	662	S.F.	1E R
622	Seattle, Wash.	3 R	665	N.Y.	1½ P
623	Sacramento, Calif.	3 R	665	Philadelphia, Penna.	1½ R
624	L.A.	3 R	666	L.A.	1½ R
625	S.F.	3 R	669	S.F.	1½ P-R
626	Long Beach, Calif.	3 R	669	Sacramento, Calif.	1½ R
627	S.F.	3 R	670	L.A.	2 R
628	L.A.	3 R	671	L.A.	2 R
629	S.F.	3 R	672	L.A.	2 R
629	Arlington, N.J.	3 R	673	L.A.	2 R
629	Long Island City, N.Y.	3 R	673	San Diego, Calif.	2 R
630	L.A.	3 R	673	Seattle, Wash.	2 R
631	Sacramento, Calif.	3 R	674	S.F.	2 R
631	Redlands, Calif.	3 R	675	Pottstown, Pa.	2 R
632	S.F.	3 R	676	L.A.	2 R
632	Saint Louis, Mo.	3 R	676	S.F.	2 R
633	L.A.	3 R	676	Oakland, Calif.	2 R
634	L.A.	3 R	677	L.A.	2 R
634	Berkeley, Calif.	3 R	677	Inglewood, Calif.	2 R
634	Sacramento, Calif.	3 R	678	L.A.	2 R
635	S.F.	3 R	679	L.A.	2 R
635	Saint Louis, Mo.	3 R	680	L.A.	2 R
637	Santa Ana, Calif.	3 R	681	L.A.	2 R
638	Seattle, Wash.	3 R	682	L.A.	2 R
639	Sacramento, Calif.	3 R	682	Portland, Ore.	2 R
639	S.F.	3 R	683	L.A.	2 R
639	L.A.	3 R	684	Philadelphia, Pa.	2 R
640	L.A.	2 R	686	Seattle, Wash.	2 R
640	Brooklyn, N.Y.	2 R	686	San Bernardino, Calif.	2 R
640	Hollywood Sta., L.A.	2 R	686	L.A.	2 R
641	Seattle, Wash.	2 R	687	S.F.	2 R
642	L.A.	2 R	688	S.F.	3 R
642	S.F.	2 R	688	L.A.	3 R

688	Long Beach, Calif.	3 R	732	Phoenix, Ariz.	3 R
688	San Bernardino, Calif.	3 R	732	Santa Barbara, Calif.	3 R
689	S.F.	3 R	732	S.F.	3 R
690	L.A.	3 R	733	S.F.	3 R
691	San Bernardino, Calif.	3 R	736	S.F.	1½ P-R
692	S.F.	3 R	737	Santa Ana, Calif.	1 P
692	N.Y.	3 P	738	S.F.	1DD 1E R
693	Seattle, Wash.	3 R	740	Chicago, Ill	1D R
694	L.A.	3 R	740	Wheaton, Ill.	1D R
694	Phoenix, Ariz.	3 R	741	S.F.	1A P
694	Chicago, Ill.	3 R	741	Berkeley, Calif.	1A P
695	Oakland, Calif.	3 R-P	741	L.A.	1D R
696	L.A.	3 R	742	S.F.	1A P
697	L.A.	3 R	NEM742	N.Y.	1½ R
698	L.A.	3 R	743	Chicago, Ill.	1 1D 1E R
699	L.A.	3 R	744	S.F.	1DD R
699	Jenkintown, Pa.	3 R	744	N.Y.	1D R
700	Phoenix, Ariz.	1½ R	745	L.A.	2 R
700	L.A.	1½ P	746	Seattle, Wash.	2 R
701	N.Y.	1½ R	747	Phoenix, Ariz.	2 R
702	L.A.	2 R	748	S.F.	2 R
703	L.A.	2 P	749	S.F.	2 R
703	N.Y.	2 R	750	Portland, Ore.	2 R
704	L.A.	2 R	750	L.A.	2 R
705	L.A.	2 R	750	San Bernardino, Calif.	2 R
706	Chicago, Ill.	2 R	751	Portland, Ore.	2 R
706	North Hollywood, Calif.	2 R	751	L.A.	2 R
707	Glendale, Calif.	2 R	753	S.F.	2 R
707	Santa Ana, Calif.	2 R	755	Chicago, Ill.	2 R
708	S.F.	2 R	756	L.A.	2 R
708	L.A.	2 R	756	Philadelphia, Pa.	2 R
709	L.A.	2 B	757	L.A.	3 R
710	S.F.	2 R	758	Hollywood Calif.	3 R
711	S.F.	2 R	758	L.A.	3 R
712	S.F.	2 R	758	Berkeley, Calif.	3 R
714	L.A.	2 R	759	Portland, Ore.	3 P
715	Hollywood, Calif.	2 R	760	Sacramento, Calif.	3 R
715	L.A.	2 R	760	S.F.	3 R
716	L.A.	2 R	761	Alameda, Calif.	3 R
717	L.A.	2 R	762	Sacramento, Calif.	3 R
718	S.F.	3 R	763	" "	3 R
719	S.F.	3 R	763	L.A.	3 R
719	N.Y.	3 P	763	Long Island City, N.Y.	3 R
720	San Jose, Calif.	3 R	763	N.Y.	3 R
721	L.A.	3 R	764	L.A.	3 R
721	N.Y.	3 R	764	S.F.	3 R
723	L.A.	3 R	765	L.A.	3 R
724	S.F.	3 R	766	S.F.	3 R
725	S.F.	3 R	766	San Bernardino, Calif.	3 R
725	L.A.	3 R	767	S.F.	3 R
726	S.F.	3 P-R	767	Berkeley, Calif.	3 R
727	L.A.	3 R	768	L.A.	3 R
728	S.F.	3 R	768	San Bernardino, Calif.	3 R
728	N.Y.	3 P	769	S.F.	1½ N-R
728	Kearny, N.J.	3 R	769	Chicago, Ill.	1½ R
729	Long Beach, Calif.	3 R	770	Montclair, N.J.	1½ R
730	L.A.	3 R	771	N.Y.	1½ R
730	Portland, Ore.	3 R	772	S.F.	1½ R
730	Philadelphia, Penna.	3 R	772	Sacramento, Calif.	1½ R
731	L.A.	3 R	772	San Jose, Calif.	1½ R

773	L.A.	2 R	819	L.A.	2 R
773	Santa Monica, Calif.	2 R	819	South Pasadena, Calif.	2 R
773	S.F.	2 R	820	Redondo Beach, Calif.	3 R
774	S.F.	2 R	820	Jenkintown, Pa.	3 R
776	L.A.	2 R	821	Seattle, Wash.	3 R
776	Chicago, Ill.	2 R	823	San Diego, Calif.	3 R
777	Glendale, Calif.	2 R	824	Glendale, Calif.	3 R
777	Oakland, Calif.	2 R	825	Sacramento, Calif.	3 R
778	S.F.	2 R	826	Van Nuys, Calif.	3 R
779	S.F.	2 R	826	San Diego, Calif.	3 R
779	N.Y.	2 R	827	S.F.	3 R
779	Jersey City, N.J.	2 R	827	Seattle, Wash.	3 R
780	S.F.	2 R	828	L.A.	3 R
780	N.Y.	2 R	828	Chicago, Ill.	3 R
781	S.F.	2 R	828	Philadelphia, Penn.	3 R
781	Brooklyn, N.Y.	2 R	828	Ardmore, Pa.	3 R
782	S.F.	2 R	829	L.A.	3 R
783	Philadelphia, Penna.	2 R	830	Phoenix, Ariz.	3 R
784	S.F.	2 R	830	Atlanta, Ga.	3 R
784	L.A.	2 R	830	Chicago, Ill.	3 R
785	L.A.	2 R	831	L.A.	3 R-P
786	Seattle, Wash.	2 R	831	N.Y.	3 R
787	L.A.	2 R	832	L.A.	3 R
788	Compton, Calif.	3 R-P	832	Long Island City, N.Y.	3 R
790	Minneapolis, Minn.	3 R	833	Hollywood, Calif.	3 R
791	L.A.	3 R	835	S.F.	3 R
791	Chester, Pa.	3 R	836	L.A.	3 R
792	L.A.	3 R	836	Beverly Hills, Calif.	3 R
792	Ardmore, Pa.	3 R	838	L.A.	3 R
792	Chicago, Ill.	3 R	839	L.A.	3 R
793	San Bernardino, Calif.	3 R	839	Sacramento, Calif.	3 R
795	Sacramento, Calif.	3 R	839	Monrovia, Calif. (B)	3 R
796	Berkeley, Calif.	3 R	840	Long Beach, Calif.	3 R-B
796	Waterbury, Conn.	3 R	840	Chicago, Ill.	3 R
798	S.F.	3 R	841	Santa Monica, Calif.	3 R
798	Oakland, Calif.	3 R	841	Riverside, Calif.	3 R
799	S.F.	3 R	842	L.A.	2 R
799	L.A.	3 R	842	San Bernardino, Calif.	2 R
800	S.F.	1D 1E R	843	L.A.	2 R
801	Philadelphia, Penna.	1E R	844	L.A.	2 R
802	Chicago, Ill.	6 R	844	S.F.	2 R
803	Washington, D.C.	1½ R	844	Jamaica, N.Y.	2 R
804	L.A.	1½ R	845	L.A.	2 R
805	N.Y.	1½ R	845	Redlands, Calif.	2 R
807	N.Y.	1D P	846	L.A.	2 R
807	N.Y.	1E R	847	Whittier, Calif.	2 R
808	S.F.	1A 1AD R	848	L.A.	2 R
809	S.F.	1DD R	849	Santa Monica, Calif.	2 R
809	L.A.	1D R	850	Portland, Ore.	2 R
809	Boston, Mass.	1E R	850	L.A.	2 R
810	S.F.	1DD 1E R	851	Portland, Ore.	2 R
810	S.F.	1DD P	853	L.A.	2 R
810	Sacramento, Calif.	1E R	853	Chicago, Ill.	2 R
811	Long Beach, Calif.	2 R	855	L.A.	2 R
815	L.A.	2 R	NP857	L.A.	1A R
816	San Bernardino, Calif.	2 R	NP857	Chicago, Ill.	1 1D R
816	Chicago, Ill.	2 R	NP858	L.A.	1 1A 1D 1E R
817	L.A.	2 R	NP859	S.F.	1 1D R
818	L.A.	2 R	NP859	S.F.	1 P
818	Hollywood Sta., L.A.	2 R	NP859	Beverly Hills, Calif.	1 R

NP860	Waterbury, Conn.	1D	1E R	897	Thompsonville, Conn.		3 R
NP860	New Haven, Conn.		1D R	898	Santa Monica, Calif.		3 R-P
NP860	Boston, Mass		1E R	898	L.A.		3 R
NP861	L.A.		1 $\frac{1}{2}$ R	899	San Diego, Calif.		3 R
NP862	L.A.		1 $\frac{1}{2}$ R	899	Branford, Conn.		3 R
NP862	N.Y.		1 $\frac{1}{2}$ R	900	Buffalo, N.Y.		1D R
NP863	N.Y.		1 $\frac{1}{2}$ R	900	L.A.		1 1E R
NP864	N.Y.		1 $\frac{1}{2}$ R	900	Minneapolis, Minn.		1E R
NP865	L.A.		1 $\frac{1}{2}$ R	901	San Diego, Calif.		1D 1E R
NP866	L.A.		1DD R	901	N.Y.		1 1D 1E R
NP866	Philadelphia, Penna.		1D R	901	Minneapolis, Minn.		1E R
NP867	Chicago, Ill.		1D R	902	Waterbury, Conn.		1D R
NP867	Kansas City, Mo.		1D R	902	N.Y.		1E R
NP867	" " "		1E P	902	Chicago, Ill.		1E R
NP869	S.F.		1 R	902	Boston, Mass.		1E R
870	S.F.		2 R	902	Minneapolis, Minn.		1E R
872	S.F.		2 R	903	Philadelphia, Penna.		1D 1E R
872	Oakland, Calif.		2 R	904	L.A.		1D R
NP874	L.A.		3 R	904	Chicago, Ill.		1D 1E R
NP874	Portland, Ore.		3 R	905	N.Y.		1D 1E R
NP874	San Bernardino, Calif.		3 R	905	New Haven, Conn.		1E P
NP875	L.A.		3 R	908	N.Y.		1 R
NP875	Long Beach, Calif.		3 R	908	Philadelphia, Penna.		1E R
NP876	N.Y.		3 R	908	Boston, Mass.		1E R
NP876	Waterbury, Conn.		3 R	912	(No townmark-L.I. City)		18 R
NP877	L.A.		3 R	912	REGISTERED/MAIL		18 R
NP877	Brooklyn, N.Y.		3 R	916	N.Y.		1 $\frac{1}{2}$ R
NP877	Saint Louis, Mo.		3 R	918	N.Y.		1 $\frac{1}{2}$ R
NP879	L.A.		3 R	918	Philadelphia, Pa.		1 $\frac{1}{2}$ R
NP879	Norwalk, Conn.		3 R	920	N.Y.		1 $\frac{1}{2}$ R
NP879	Plainfield, Conn.		3 R	920	Mount Vernon, N.Y.		1 $\frac{1}{2}$ R
NP879	Waterbury, Conn.		3 R	923	N.Y.		1 $\frac{1}{2}$ R
NP879	N.Y.		3 R	924	N.Y.		1 $\frac{1}{2}$ R
880	Santa Ana, Calif.		2 R	925	N.Y.		1 $\frac{1}{2}$ P
881	L.A.		2 R	927	N.Y.		1 $\frac{1}{2}$ R
881	Santa Barbara, Calif.		2 R	928	N.Y.		1 $\frac{1}{2}$ R
882	L.A.		2 R	930	N.Y.		1 $\frac{1}{2}$ R
883	Glendale, Calif.		2 R	931	Chicago, Ill.		1 $\frac{1}{2}$ R
885	L.A.		2 R	932	Kansas City, Mo.		1E P
886	N.Y.		3 R	933	Philadelphia, Pa.		1 R
887	S.F.		3 R	934	Waterbury, Conn.		1D R
887	San Jose, Calif.		3 R	934	Brooklyn, N.Y.		1D R
888	S.F.		3 R	934	N.Y.		1E R
889	L.A.		3 R	935	N.Y.		1D R
890	S.F.		3 R	935	Chicago, Ill.		1 1D 1E R
890	L.A.		3 R	936	Philadelphia, Penna.		1D R
891	Branford, Conn.		3 R	937	L.A.		1E R
891	N.Y.		3 P-R	937	Long Beach, Calif.		1E R
891	Arlington, Mass.		3 R	937	N.Y.		1E R
892	Oakland, Calif.		3 R	938	N.Y.		1D 1E R
892	S.F.		3 R	938	Minneapolis, Minn.		1E R
892	Pasadena, Calif.		3 R	939	New Haven, Conn.		1 1D 1E R
893	S.F.		3 R	939	Waterbury, Conn.		1E R
893	Sacramento, Calif.		3 R	940	Chicago, Ill.		1D R
894	Chicago, Ill.		3 R	940	Philadelphia, Penna.		1E R
895	Santa Ana, Calif.		3 R	941	Chicago, Ill.		1D 1E R
896	L.A.		3 R	942	Philadelphia, Penna.		1E R
896	N.Y.		3 R	942	Brooklyn, N.Y.		1E R
897	San Bernardino, Calif.		3 R	943	Waterbury, Conn.		1D R
897	Chicago, Ill.		3 R	943	N.Y.		1D 1E R

943	Newark, N.J.		1D R	1005	Kansas City, Mo.		1E R
944	Chicago, Ill.	1D	1E R	1006	Philadelphia, Penna.		1D R
944	L.A.		1E R	1007	" "		1E P
945	Chicago, Ill.		1 $\frac{1}{2}$ R	1007	Chicago, Ill.		1E R
946	L.A.		1 $\frac{1}{2}$ R	1007	Saint Louis, Mo.		1E R
947	L.A.		1 $\frac{1}{2}$ R	1009	L.A.		1D R
949	L.A.		1 $\frac{1}{2}$ R	1010	Sacramento, Calif.		1 $\frac{1}{2}$ R
949	S.F.		1 $\frac{1}{2}$ R	1011	N.Y.	1 $\frac{1}{2}$ 1 $\frac{1}{2}$	1E R
950	L.A.		1 $\frac{1}{2}$ R	1012	Sacramento, Calif.		1 $\frac{1}{2}$ R
952	N.Y.		1D R	1012	S.F.		1 $\frac{1}{2}$ R
953	Chicago, Ill.		1 R	1012	San Jose, Calif.		1 $\frac{1}{2}$ R
955	Sacramento, Calif.		1 $\frac{1}{2}$ R	1013	Sacramento, Calif.		1 $\frac{1}{2}$ R
956	L.A.		1 $\frac{1}{2}$ R	1014	San Jose, Calif.		1 $\frac{1}{2}$ R
958	(no townmark)		21 R	1016	Minneapolis, Minn.		1 $\frac{1}{2}$ R
962	N.Y.		1 $\frac{1}{2}$ R	1017	Chicago, Ill.		1 $\frac{1}{2}$ R
963	N.Y.		1 $\frac{1}{2}$ R	1018	Kansas City, Mo.	1 $\frac{1}{2}$ 1 $\frac{1}{2}$	1E R
964	Wheaton, Ill.		1 $\frac{1}{2}$ R	1019	L.A.		1 R
966	Chicago, Ill.		1E R-P	1020	Chicago, Ill.	1 1D	1E R
966	Kansas City, Mo.		1E P	1020	Atlanta, Ga.		1E R
967	Chicago, Ill.		1 1D R	1021	Chicago, Ill.		1E R
968	L.A.	1D	1E R	1022	" "		1D 1E R
969	Chicago, Ill.		1D R	1023	" "	1 1D	1E R
969	L.A.		1E R	1023	Saint Louis, Mo.		1E R
970	Chicago, Ill.	1 1D	1E R	1024	Chicago, Ill.	1 1D	1E R
970	Fort Atkinson, Wis.		1D R	1024	Saint Louis, Mo.		1E R
971	Chicago, Ill.		1D R	1024	Philadelphia, Penna.		1E R
971	" "		1E P	1025	N.Y.		1D G
972	" "		1 $\frac{1}{2}$ R	1025	N.Y.		1E R
972	Rochester, N.Y.		1 $\frac{1}{2}$ R	1025	Minneapolis, Minn.		1E R
974	Chicago, Ill.		1 $\frac{1}{2}$ R	1026	N.Y.		1D R
975	" "		1 $\frac{1}{2}$ R	1026	Kansas City, Mo.		1D R
976	" "		1 $\frac{1}{2}$ R	1027	N.Y.		1D R
977	" "		1D R	1028	Philadelphia, Penna.		1E R
977	Fort Atkinson, Wis.	1D	1E R	1029	Chicago, Ill.		1 $\frac{1}{2}$ R
979	Chicago, Ill.	1D	1E R	1029	Milwaukee, Wis.		1 $\frac{1}{2}$ R
981	" "		1 $\frac{1}{2}$ R	1030	Chicago, Ill.		1 $\frac{1}{2}$ R
982	" "		1 $\frac{1}{2}$ R	1032	" "		1 $\frac{1}{2}$ R
983	N.Y.	1D	1E R	1033	" "		1 $\frac{1}{2}$ R
983	S.F.		1E R	1034	" "		1 $\frac{1}{2}$ R
984	L.A.	1DD	1E R	1035	N.Y.	1 $\frac{1}{2}$	R-P
984	Philadelphia, Penna.		1E R	1036	N.Y.		1 $\frac{1}{2}$ R
985	N.Y.	1D	1E R	1037	N.Y.		1 $\frac{1}{2}$ R
985	N.Y.		1E P	1038	N.Y.		1 $\frac{1}{2}$ R
987	N.Y.		1E P	1040	L.A.		1 $\frac{1}{2}$ R
987	Jersey City, N.J.	1D	1E R	1041	Chicago, Ill.		1 $\frac{1}{2}$ R
988	Saint Paul, Minn.		1D R	1045	" "	1D	1E R
990	L.A.		1 $\frac{1}{2}$ R	1046	Philadelphia, Penna.		1E R
991	L.A.		1 $\frac{1}{2}$ R	1046	N.Y.		1E R
992	L.A.		1 $\frac{1}{2}$ R	1046	Minneapolis, Minn.		1E R
993	S.F.		1 $\frac{1}{2}$ R	1047	Chicago, Ill.		1D R
993	San Jose, Calif.		1 $\frac{1}{2}$ R	1047	Glendale, Calif.		1E R
995	Rochester, N.Y.		12 R	1048	Fort Wayne, Ind.		1D R
996	N.Y.		1 $\frac{1}{2}$ R	1048	Wheaton, Ill.	1D	1E R
997	S.F.		1 $\frac{1}{2}$ R	1048	Chicago, Ill.		1 R
997	Sacramento, Calif.		1 $\frac{1}{2}$ R	1048	" "		1E P
999	N.Y.		1 $\frac{1}{2}$ R	1049	S.F.		4 $\frac{1}{2}$ R
1000	S.F.		1 $\frac{1}{2}$ R	1050	S.F.		1 $\frac{1}{2}$ R
1001	Saint Paul, Minn.		1 $\frac{1}{2}$ R	1050	San Jose, Calif.		1 $\frac{1}{2}$ R
1002	Portland, Ore.		1 $\frac{1}{2}$ R	1055	Chicago, Ill.		1 $\frac{1}{2}$ R
1003	Chicago, Ill.		1 $\frac{1}{2}$ R	1057	" "		1 $\frac{1}{2}$ R

1058	Milwaukee, Wis.	1½	R	1124	Pasadena, Calif.	1E	R		
1059	Chicago, Ill.	1½	R	1125	Chicago, Ill.	1 1E	R		
1062	West Bend, Wis.	1½	R	1125	" "	1E	P		
1063	L.A.	1½	R	1125	N.Y.	1E	P		
1065	Chicago, Ill.	1½	R	1125	Saint Louis, Mo.	1E	R		
1068	" "	1D	1E	R	" " "	1E	R		
1068	" "		1E	G	1126	Philadelphia, Penna.	1E	R	
1069	" "		1E	R	1130	Santa Monica, Calif.	2	P	
1070	" "	1	1D	R	1132	Hollywood Sta., L.A.	2	R	
1071	L.A.	1	1D	R	1133	L.A.	2	R	
1072	Seattle, Wash.		1D	R	1134	L.A.	2	R	
1072	Kansas City, Mo.		1E	R	1139	Chicago, Ill.	1E	R	
1073	Topeka, Kans.		1D	R	1139	N.Y.	1E	R	
1073	Kansas City, Mo.		1E	R	1139	Minneapolis, Minn.	1E	R	
1073	Boston, Mass.		1E	R	1140	L.A.	1E	R	
1074	Saint Louis, Mo.		1E	R	1141	L.A.	1E	R	
1075	S.F.		1E	R	1142	Minneapolis, Minn.	1E	R	
1076	S.F.		1E	R	1143	Philadelphia, Penna.	1E	R	
1078	Philadelphia, Penna.		1E	R	1145	" " "	1E	R	
1078	Minneapolis, Minn.		1E	R	1145	Minneapolis, Minn.	1E	R	
1080	N.Y.		1½	R	1150	Chicago, Ill.	1E	R	
1081	L.A.		1E	R	1151	Champaign, Ill.	1E	R	
1082	Topeka, Kans.		1D	R	1151	Chicago, Ill.	1E	R	
1082	Kansas City, Mo.		1E	R	1154	Saint Louis, Mo.	1E	R	
1083	S.F.	1D	1E	R	1155	Chicago, Ill.	1E	P	
1084	L.A.		1E	R	1160	Venice, Calif.	2	R	
1087	L.A.	1½	1½	D	R	1161	Lynwood, Calif.	2	R
M1090	Monterey Park, Calif.		2	R	1164	Hermosa Beach, Calif.	2	R	
M1091	L.A.		2	R	1169	Manhattan Beach, Calif.	2	R	
NP1092	Saint Louis, Mo.		3	R	1176	Beverly Hills, Calif.	2	R	
1095	L.A.		1E	R	1500	Chicago, Ill.	3	R	
1095	Long Beach, Calif.		1E	R	1501	Philadelphia, Pa.	3	R	
1095	N.Y.		1E	P	1501	Philadelphia, Penna.	3	R	
1097	Philadelphia, Pa.		1	R	1504	" "	3	R	
1098	Chicago, Ill.		1E	P	1506	Revere, Mass. (B)	3	R	
1099	Minneapolis, Minn.		1E	R	1507	" " "	3	R	
1100	Chicago, Ill.		1E	R	1507	" " "	3	R	
1100	Milwaukee, Wis.		1E	R	1508	Philadelphia, Pa.	3	R	
1101	Chicago, Ill.	1	1D	1E	R	1509	East Weymouth, Mass. (B)	3	R
1102	Topeka, Kans.		1E	R	1511	Philadelphia, Penna.	3	R	
1103	L.A.		1E	R	1511	Chester, Pa.	3	R	
1103	Long Beach, Calif.		1E	R	1512	Atlanta, Ga.	3	R	
1103	Minneapolis, Minn.		1E	R	1512	Rochester, N.Y.	3	G	
1105	San Diego, Calif.		1D	R	1515	" "	3	R	
1105	Philadelphia, Pa.		1	R	1515	" "	3	R	
1106	L.A.		1E	R	1517	Chicago, Ill.	3	R	
1107	Washington, D.C.		1E	R	1517	" " (B)	3	R	
1108	Rochester, N.Y.	1D	1E	R	1517	Rochester, N.Y.	3	R	
1108	L.A.		1E	R	1519	Atlanta, Ga.	3	R	
1108	Boston, Mass.		1E	R	1531	Rochester, N.Y.	16	R	
1119	Philadelphia, Penna.		1½	R	1536	N.Y.	3	R	
1120	La Crescenta, Calif.		2	R	1537	Jenkintown, Pa.	3	R	
1121	Rochester, N.Y.		6	R	1538	Jersey City, N.J.	3	R	
1123	L.A.		1E	R	1538	N.Y.	3	R	
1123	Chicago, Ill.		1E	P	1539	Long Island City, N.Y.	3	R	
1123	Saint Louis, Mo.		1E	R	1543	South Bend, Ind.	4½	R	
1124	Chicago, Ill.		1E	P	M7700	S.F.	3	R	

5000	N.Y.		3	R	5032	L.A.		2	R
5000	L.A.		3	R	5032	Washington, D.C.		3	6 R
5000	Portland, Ore.		3	6 15 R	5033	L.A.		2	3 R
5001	L.A.		2	3 R	5033	Pasadena, Calif.		2	R
5002	S.F.		2	R	5033	S.F.		3	R
5002	Chicago, Ill.		3	R	5034	Dallas, Tex.		3	6 R
5004	S.F.		2	3 15 R	5035	L.A.		3	R
5004	Kansas City, Mo.		3	R	5036	L.A.		1D	2 3 R
5005	L.A.		2	3 R	5037	Pasadena, Calif.		3	6 R
5005	Indianapolis, Ind.		3	6 R	5038	S.F.		2	3 6 10 R
5006	L.A.		3	R	5038	N.Y.		2	3 R
5007	N.Y.		3	R	5039	Kansas City, Mo.		3	6 R
5007	Memphis, Tenn.		3	6 R	5040	L.A.		2	3 6 R
5007	Chicago, Ill.	(B)	3	R	5041	Samoa, Calif.		3	6 R
5008	S.F.		2	3 10 R	5042	Seattle, Wash.		2	R
5008	Samoa, Calif.		3	6 R	5043	San Diego, Calif.		3	R
5009	L.A.		2	3 R	5043	Passaic, N.J.		3	R
5009	Philadelphia, Penna.		3	6 15 R	5044	Seattle, Wash.		2	3 R
5010	N.Y.		2	3 R	5044	L.A.		3	R
5012	N.Y.		1E	2 3 R	5044	Pomona, Calif.		3	R
5013	L.A.		3	R	5045	N.Y.		2	R
5013	Minneapolis, Minn.		3	R	5045	Passaic, N.J.		3	R
5014	Pasadena, Calif.		3	15 R	5046	Long Island City, N.Y.		2	3 R
5014	South Pasadena, Calif.		2	3 6 15 R	5046	N.Y.		3	R
5014	L.A.		3	6 R	5047	Brooklyn, N.Y.		3	R
5015	L.A.		2	R	5048	N.Y.		3	R
5015	Chicago, Ill.		3	R	5049	L.A.		2	R
5015	Omaha, Neb.		3	R	5049	N.Y.		2	3 R
5016	S.F.		2	3 10 R	5052	S.F.		2	3 6 R
5016	Oakland, Calif.		2	3 10 R	5052	L.A.		2	3 R
5016	N.Y.		3	R	5053	Philadelphia, Penna.		3	R
5017	N.Y.		2	3 6 R	5053	Oakland, Calif.		3	R
5018	S.F.		2	3 6 R	5053	S.F.		3	6 R
5019	S.F.		2	R	5053	Sacramento, Calif.		2	R
5019	Brooklyn, N.Y.		3	R	5053	L.A.		3	R
5019	Passaic, N.J.		3	R	5054	S.F.		2	3 R
5019	Jamaica, N.Y.		3	R	5055	L.A.		1½	2 3 R
5020	L.A.		1DI	1½ R	5056	Oakland, Calif.		3	R
5020	N.Y.		3	R	5056	Sacramento, Calif.		2	3 15 R
5020	Brooklyn, N.Y.		3	R	5056	N.Y.		2	3 R
5021	N.Y.		3	R	5056	Chicago, Ill.		2	3 6 R
5021	Salt Lake City, Utah		2	3 6 15 R	5057	L.A.		2	3 R
5022	S.F.		3	R	5057	Long Beach, Calif.		3	R
5022	Detroit, Mich.		2	3 6 R	5057	N.Y.		3	R
5023	Brooklyn, N.Y.		3	R	5058	S.F.		3	R
5023	N.Y.		3	R	5058	L.A.		2	3 R
5024	S.F.		2	3 6 10 R	5058	Oakland, Calif.		3	R
5025	L.A.		3	R	5058	Kansas City, Mo.		2	3 6 15 R
5026	L.A.		1½	R	5058	N.Y.		1	3 8 R
5026	N.Y.		3	R	5059	Oakland, Calif.		1	ID 3 15 R
5027	Pittsburgh, Pa.		2	3 6 15 R	5059	Berkeley, Calif.		3	15 R
5028	S.F.		1½	2 3 R	5060	L.A.		1½	2 3 6 R
5028	L.A.		3	R	5061	S.F.		1D	R
5029	Brooklyn, N.Y.		2	3 R	5061	Oakland, Calif.		3	R
5030	L.A.		2	3 R	5061	L.A.		1E	2 3 10 R
5030	N.Y.		3	R	5062	San Jose, Calif.		3	6 R
5031	Brooklyn, N.Y.		3	R	5063	L.A.		3	R
5031	L.A.		2	3 6 15 R	5063	Sacramento, Calif.		2	R
5031	Pasadena, Calif.		3	R	5063	S.F.		1	2 3 10 R
					5063	Eureka, Calif.		1	3 10 R

5064	S.F.		3 R	5089	S.F.		2 3 6 R
5064	Hollywood, Calif.		3 R	5090	S.F.		2 3 6 R
5064	N.Y.		3 R	5091	S.F.		2 3 R
5064	Ogden, Utah		2 3 6 R	5091	Chicago, Ill. (B)		3 R
5065	Terminal Island, Calif.		1½ 3 R	5093	Oakland, Calif.		3 R
5065	L.A.	1D 1E	2 2E 3 6 R	5093	Alameda, Calif.		3 R
5066	L.A.		2 3 6 15 R	5093	L.A.		2 3 6 R
5066	Chicago, Ill.		2 3 6 R	5093	Spokane, Wash.		3 6 R
5067	S.F.		2 3 R	5093	Brooklyn, N.Y.		3 R
5067	Philadelphia, Pa.		2 R	5094	S.F.	1½	2 3 6 R
5067	Buffalo, N.Y.		3 R	5095	L.A.		2 3 6 R
5067	Saint Louis, Mo.		3 R	5096	S.F.		2 3 R
5068	S.F.		2 3 6 R	5096	L.A.		2 3 R
5068	Spokane, Wash.		2 3 6 R	5097	S.F.		2 3 6 R
5069	S.F.	1 2 3	10 R	5097	San Jose, Calif.		2 3 6 R
5070	Hollywood, Calif.		3 R	5098	L.A.		2 3 R
5070	L.A.		2 3 10 R	5098	Santa Barbara, Calif.		3 R
5070	L.A.		3 B	5098	Long Beach, Calif.		3 R
5071	S.F.		1D P	5099	L.A.	2 3 6	15 R
5071	S.F.	1D 1E	2 R	5099	Hollywood, Calif.	2 6	15 R
5071	San Jose, Calif.	1 2 3	R	5099	Philadelphia, Penna.	2 3	R
5071	Beverly Hills, Calif.		3 R	5099	Philadelphia, Pa.		2 R
5072	S.F.		2 3 R	5099	N.Y.	2 3 6	15 R
5072	L.A.		2 R	5100	Beverly Hills, Calif.	1 1D	3 6 R
5072	Van Nuys, Calif.		2 3 R	5100	" " "		1 P
5073	S.F.		2 3 R	5100	L.A.	1½	2 3 6 R
5073	Oakland, Calif.		3 R	5100	Santa Ana, Calif.		1 3 R
5074	San Jose, Calif.		3 R	5100	S.F.	1½	3 R
5074	Chicago, Ill.	1 1D	2 3 R	5101	S.F.	1½	2 3 6 R
5074	Detroit, Mich.		2 R	5101	Seattle, Wash.		3 R
5074	L.A.		2 3 R	5101	Ogden, Utah		3 R
5074	Philadelphia, Penna.	1E	3 R	5102	S.F.		3 R
5075	S.F.	1D	2 3 R	5102	Yosemite National Park, Calif.	1 1D 1E 1½ 1½D	3 6 R
5075	N.Y.	1E 2 2E	3 6 R	5103	Sacramento, Calif.		2 3 R
5076	L.A.		2 3 R	5104	S.F.		2 3 10 R
5077	S.F.		2 3 R	5104	Oakland, Calif.	2 3 6	10 R
5077	Alameda, Calif.		3 R	5104	Berkeley, Calif.		2 R
5077	L.A.		3 R	5105	S.F.		2 3 R
5078	S.F.		2 3 R	5105	Oakland, Calif.		3 R
5078	San Jose, Calif.		3 R	5105	Philadelphia, Penna.		3 R
5079	S.F.		1½ 2 R	5106	S.F.		2 3 6 R
5079	Seattle, Wash.		1½ 2 3 R	5106	Brooklyn, N.Y.	1½	2 3 6 R
5079	Kansas City, Mo.	1D 1E	1½ 3 R	5106	Boston, Mass.		3 R
5080	S.F.		2 4 R	5107	S.F.		2 R
5080	N.Y.		1½ 3 R	5107	Berkeley, Calif.		3 R
5081	Sacramento, Calif.		3 6 12 R	5107	San Jose, Calif.		3 R
5081	S.F.		2 3 R	5107	L.A.	1½	3 R
5082	S.F.		1D R	5108	S.F.		2 3 R
5082	L.A.		2 3 6 R	5109	S.F.		2 3 6 R
5082	Chicago, Ill.	2 3 6	15 R	5109	L.A.		2 3 R
5083	Phoenix, Ariz.		3 R	5110	S.F.		3 R
5083	Sacramento, Calif.	1 2 3	R	5110	Sacramento, Calif.		3 R
5083	S.F.		3 R	5110	Alameda, Calif.		3 R
5084	S.F.		2 3 R	5110	Oakland, Calif.	2 3 10	R
5084	Chicago, Ill.		3 R	5111	S.F.	1DD	2 3 10 R
5084	Kansas City, Mo.		2 3 R	5111	Chicago, Ill.	1E	2 R
5085	L.A.		2 3 R	5112	L.A.		2 3 6 R
5085	S.F.		2 R	5113	S.F.	2 3 6	10 R
5086	L.A.		2 3 6 R	5114	S.F.		2 3 6 R
5086	Chicago, Ill.		2 3 R	5114	L.A.		2 3 R

5114	Portland, Ore.	2 6 R	5139	L.A.	1½ 2 3 R
5115	L.A.	2 3 R	5140	S.F.	3 R
5115	Long Beach, Calif.	3 R	5140	N.Y.	1E 2 3 R
5115	Salt Lake City, Utah	3 6 R	5140	Chicago, Ill.	3 8 R
5116	San Diego, Calif.	3 6 R	5141	Glendale, Calif.	2 3 6 10 R
5116	L.A.	2 3 6 15 R	5142	N.Y.	2 3 6 R
5117	S.F.	2 3 R	5142	Madison, Wis.	3 R
5117	Berkeley, Calif.	1½ R	5143	S.F.	2 3 R
5118	S.F.	2 3 R	5143	Sacramento, Calif.	2 3 6 R
5119	L.A.	1½ 2 3 6 R	5143	Oakland, Calif.	3 R
5120	S.F.	2 6 R	5143	Houston, Tex.	1E R
5120	Sacramento, Calif.	3 R	5144	L.A.	2 3 R
5121	S.F.	2 3 6 R	5144	Santa Ana, Calif.	3 R
5121	Richmond, Calif. (B)	2 R	5145	Chicago, Ill.	2 3 6 R
5121	Champaign, Ill.	1E R	5145	N.Y.	3 R
5122	S.F.	2 3 R	5146	L.A.	2 3 R
5122	N.Y.	1E 3 R	5146	Kansas City, Mo.	3 R
5123	S.F.	1 1½ 2 3 R	5146	Milwaukee, Wis.	3 R
5123	Oakland, Calif.	3 R	5146	Newark, N.J.	3 R
5123	Phoenix, Ariz.	2 R	5147	S.F.	2 3 6 10 R
5123	Kansas City, Mo.	3 R	5147	San Jose, Calif.	3 R
5124	S.F.	2 3 6 R	5147	Oakland, Calif.	3 R
5124	Oakland, Calif.	3 R	5148	Kansas City, Mo.	3 R
5125	S.F.	1D 2 3 R	5148	Detroit, Mich.	3 R
5125	Fresno, Calif.	2 3 R	5149	S.F.	2 3 6 R
5125	Oakland, Calif.	3 R	5149	Oakland, Calif.	3 6 R
5126	Sacramento, Calif.	3 R	5150	L.A.	2 3 R
5126	L.A.	3 R	5150	Butte, Mont.	3 10 R
5126	N.Y.	3 R	5150	Bozeman, Mont.	3 R
5126	Chicago, Ill.	3 5 R	5151	N.Y.	3 R
5127	S.F.	2 R	5153	Chicago, Ill.	2 3 R
5127	Oakland, Calif.	2 3 R	5153	San Diego, Calif.	3 R
5127	L.A.	3 R	5154	Seattle, Wash.	2 3 6 R
5127	Chicago, Ill	1E 2 3 R	5155	N.Y.	2 3 6 R
5127	South Bend, Ind.	3 R	5155	Philadelphia, Penna.	2 3 R
5127	N.Y.	3 R	5156	Brooklyn, N.Y.	2 3 R
5128	L.A.	2 3 6 15 R	5158	San Diego, Calif.	2 3 R
5128	Glendale, Calif.	2 R	5159	N.Y.	3 R
5128	Phoenix, Ariz.	2 3 R	5160	L.A.	3 R
5129	Oakland, Calif.	3 6 15 R	5160	Cleveland, Ohio	3 6 15 R
5130	Sacramento, Calif.	1 2 3 R	5160	Brooklyn, N.Y.	3 R
5130	L.A.	3 R	5161	Saint Louis, Mo.	3 R
5131	L.A.	2 3 6 R	5161	N.Y.	2 R
5132	L.A.	2 6 R	5162	L.A.	2 3 R
5132	Richmond, Calif. (B)	2 3 R	5162	Phoenix, Ariz.	2 3 R
5133	Phoenix, Ariz.	1D R	5162	Salt Lake City, Utah	3 R
5133	L.A.	1½ 2 3 R	5163	L.A.	1½ 2 3 R
5134	S.F.	2 3 R	5163	Spokane, Wash.	1½ 2 3 6 R
5134	L.A.	2 3 6 R	5164	Kansas City, Mo.	1½ 3 P
5134	Bakersfield, Calif.	3 R	5164	" " "	3 R
5135	L.A.	1D 1E 1½ 2 3 3E R	5164	Washington, D.C.	1½ R
5135	Philadelphia, Pa.	1½ 3 R	5165	Atlanta, Ga.	1½ 2 R
5136	Berkeley, Calif.	1 1D 1E 1½E 3 3E R	5167	Boston, Mass	2 3 6 15 R
5136	Sacramento, Calif.	1½ 3 R	5168	S.F.	2 3 6 15 R
5137	L.A.	1½ 2 3 R	5168	L.A.	3 R
5137	Spokane, Wash.	1½ 3 6 R	5169	S.F.	2 3 6 R
5138	San Diego, Calif.	1D 3 3D R	5169	Oakland, Calif.	2 3 R
5138	Chicago, Ill	3 R	5170	L.A.	1E 2 3 R
5138	Chicago, Ill	3 R	5170	N.Y.	2 R
5138	N.Y.	1E R	5171	San Diego, Calif.	1 3 R

5172	S.F.	2 3 10 R	5208	N.Y.	1 R
5172	Oakland, Calif.	2 R	5208	Chicago, Ill.	3 R
5173	Kansas City, Mo.	3 R	5209	S.F.	3 15 R
5173	Chicago, Ill.	3 6 R	5209	N.Y.	2 R
5173	N.Y.	1E R	5210	L.A.	3 R
5174	L.A.	1E 2 3 R	5211	Jamaica, N.Y.	3 R
5175	L.A.	2 R	5211	N.Y.	3 R
5175	Milwaukee, Wis.	3 6 15 R	5212	Milwaukee, Wis.	3 6 15 R
5176	N.Y.	3 R	5213	L.A.	3 R
5177	Buffalo, N.Y.	2 3 6 R	5213	New Haven, Conn.	3 6 R
5178	N.Y.	2 3 6 R	5214	N.Y.	1½ 2 R
5178	Fresno, Calif.	2 3 6 R	5214	Wilmington, Calif.	3 R
5179	Oakland, Calif.	2 3 6 R	5215	S.F.	2 3 P
5180	L.A.	3 R	5215	L.A.	2 3 R
5180	Pasadena, Calif.	2 R	5216	L.A.	1½ 2 3 R
5181	L.A.	2 3 6 R	5216	Brooklyn, N.Y.	3 R
5181	Spokane, Wash.	2 R	5217	Long Beach, Calif.	3 6 R
5182	L.A.	2 3 R	5218	L.A.	2 R
5183	Portland, Ore.	2 R	5218	Omaha, Neb.	2 3 6 R
5183	Seattle, Wash.	2 R	5219	N.Y.	1 2 3 R
5183	Sacramento, Calif.	3 R	5220	L.A.	2 3 6 R
5184	New Haven, Conn.	3 R	5222	Phoenix, Ariz.	3 R
5184	Atlanta, Ga.	2 3 R	5222	N.Y.	3 R
5185	L.A.	1D 1E 2 R	5222	Brooklyn, N.Y.	2 3 R
5185	Sacramento, Calif.	3 R	5223	L.A.	3 R
5186	Butte, Mont.	3 R	5223	S.F.	2 R
5186	L.A.	1D 2 3 R	5224	Chicago, Ill.	3 R
5187	L.A.	2 3 R	5225	N.Y.	3 R
5188	Detroit, Mich.	2 3 6 R	5226	N.Y.	3 R
5189	L.A.	2 3 R	5227	Salt Lake City, Utah	2 R
5189	Davenport, Iowa	3 R	5227	Atlanta, Ga.	2 3 6 R
5189	Chicago, Ill.	3 R	5228	Brooklyn, N.Y.	3 R
5189	New Brunswick, N.J.	3 R	5229	L.A.	2 3 R
5190	L.A.	6 R	5230	L.A.	2 3 R
5190	Terminal Island, Calif.	1½ 3 R	5230	Chicago, Ill	2 3 6 R
5190	Kansas City, Mo.	1½ 2 6 R	5230	" "	(B) 3 R
5190	Washington, D.C.	1½ R	5231	N.Y.	2 3 R
5191	Milwaukee, Wis.	3 R	5231	Spokane, Wash.	6 R
5192	Philadelphia, Penna.	2 3 4 6 R	5232	N.Y.	2 3 R
5194	Saint Louis, Mo.	3 6 R	5233	N.Y.	2 3 R
5194	Jefferson City, Mo.	3 R	5233	Chicago, Ill.	3 R
5194	L.A.	2 R	5234	N.Y.	3 R
5194	Santa Barbara, Calif.	2 R	5234	Brooklyn, N.Y.	3 R
5195	Seattle, Wash.	2 3 R	5235	" "	3 R
5196	Sacramento, Calif.	2 3 6 R	5235	Washington, D.C.	1½ R
5196	Oakland, Calif.	2 R	5236	Seattle, Wash.	2 3 6 15 R
5196	Salt Lake City, Utah	3 R	5236	N.Y.	2 R
5197	S.F.	2 3 6 10 R	5236	Boston, Mass.	2 R
5200	S.F.	2 R	5237	L.A.	3 R
5200	N.Y.	1E R	5237	N.Y.	2 3 R
5201	N.Y.	3 R	5237	Seattle, Wash.	2 R
5202	L.A.	2 3 6 R	5238	Washington, D.C.	3 6 R
5203	S.F.	2 3 R	5238	N.Y.	3 R
5204	Brooklyn, N.Y.	3 R	5239	N.Y.	2 3 R
5205	L.A.	2 R	5240	N.Y.	1D 1E 2 3 3E R
5205	N.Y.	3 R	5241	Brooklyn, N.Y.	2 3 R
5206	Brooklyn, N.Y.	3 R	5242	N.Y.	3 R
5207	Atlanta, Ga.	2 R	5243	Chicago, Ill.	1D 1E 3 R
5207	N.Y.	3 R	5243	L.A.	1 2 3 10 B
5208	Ozden, Utah	3 R	5243	S.F.	3 R

5245	N.Y.	2 3 4 6 R	5272	S.F.	2 R
5246	San Diego, Calif.	1 2 3 R	5273	N.Y.	3 R
5246	L.A.	2 3 6 R	5273	Chicago, Ill.	2 3 R
5247	Newark, N.J.	3 R	5273	L.A.	1E 1½ 2 R
5247	Kansas City, Mo.	3 6 R	5274	N.Y.	2 3 R
5247	Toledo, Ohio	2 R	5275	N.Y.	2 3 6 R-P
5248	S.F.	1 2 R	5275	Ogden, Utah	2 3 6 15 R
5248	Chicago, Ill.	2 R	5276	S.F.	1½ 2 3 6 R
5249	Oakland, Calif.	2 3 R	5277	N.Y.	1D 1E 2 3 R
5250	L.A.	2 3 6 15 R	5278	N.Y.	3 R
5250	Salt Lake City, Utah	3 R	5279	N.Y.	2 3 6 10 R
5251	S.F.	1½ 2 3 6 R	5279	Brooklyn, N.Y.	3 R
5251	Oakland, Calif.	1½ 2 3 6 R	5280	Milwaukee, Wis.	3 R
5252	S.F.	2 3 6 10 R	5280	West Bend, Wis.	3 6 R
5252	Philadelphia, Penna.	1 1E 3 R	5280	Chicago, Ill.	2 3 6 15 R
5252	N.Y.	1 R	5280	Aurora, Ill.	3 R
5253	S.F.	1½ 2 3 6 R	5280	N.Y.	3 R
5253	Chicago, Ill.	3 R	5281	L.A.	1½ R
5253	South Bend, Ind.	3 R	5281	Spokane, Wash.	3 6 R
5254	S.F.	1D R	5281	Philadelphia, Penna.	3 R
5254	Van Nuys, Calif.	2 3 R-K	5282	S.F.	3 R
5254	L.A.	1½ 2 3 6 R	5282	Jamaica, N.Y.	2 3 6 R
5255	L.A.	2 3 R	5282	N.Y.	2 3 R
5256	S.F.	1½ R	5282	L.A.	6 R
5256	Hollywood, Calif.	1 1D 1½ 2 3 R	5283	N.Y.	2 3 6 10 R
5257	S.F.	2 3 6 15 R	5283	L.A.	1½ 2 3 6 R
5257	Oakland, Calif.	3 R	5284	Waterbury, Conn.	3 6 R
5257	N.Y.	3 R	5284	" "	2 3 6 P
5257	Saint Louis, Mo.	3 P	5284	New Haven, Conn.	3 R
5258	S.F.	1 1D 1E 2 3 10 R	5284	Boston, Mass.	2 3 R
5258	Phoenix, Ariz.	1 2 R	5284	N.Y.	3 R
5259	N.Y.	3 R	5284	S.F.	3 5 6 15 R
5259	Brooklyn, N.Y.	3 6 R	5285	N.Y.	3 6 R
5260	N.Y.	3 R	5285	Brooklyn, N.Y.	2 3 6 10 R
5260	S.F.	3 5 R	5285	Philadelphia, Pa.	3 R
5261	N.Y.	2 3 R-P-B	5286	New Haven, Conn.	3 R
5262	N.Y.	2 3 R	5286	Sacramento, Calif.	2 3 6 R
5262	L.A.	2 3 R	5286	S.F.	3 R
5262	S.F.	3 R	5287	N.Y.	2 3 R
5262	Sacramento, Calif.	6 R	5287	Chicago, Ill.	2 3 R
5262	San Jose, Calif.	2 3 6 R	5287	" "	3 P
5262	Philadelphia, Pa.	2 3 R	5288	L.A.	1½ R
5263	N.Y.	3 R	5288	Chicago, Ill.	1E 1½ R
5263	Philadelphia, Penna.	2 R	5289	S.F.	2 3 P
5264	N.Y.	3 6 R	5290	S.F.	15 R
5265	N.Y.	2 3 15 R	5290	N.Y.	2 3 R
5266	L.A.	1 1E 2 3 R	5290	Chicago, Ill.	2 2D 3 6 15 R
5266	Santa Ana, Calif.	3 R	5290	Phoenix, Ariz.	2 3 R
5267	Philadelphia, Penna.	3 R	5290	Santa Monica, Calif.	3 R
5267	N.Y.	2 3 6 15 R	5291	N.Y.	2 3 R
5267	Chicago, Ill.	3 R	5291	S.F.	3 R
5268	N.Y.	3 R	5292	S.F.	2 3 R
5268	Chicago, Ill.	2 3 6 15 R	5292	L.A.	2 3 R
5269	South Saint Paul, Minn.	3 R	5293	N.Y.	3 R
5269	Saint Paul, Minn.	3 R	5294	N.Y.	2 3 R
5269	Portland, Ore.	2 3 10 R	5294	Hollywood, Calif.	2 3 R
5270	N.Y.	2 3 6 15 R	5295	L.A.	1D R
5271	N.Y.	2 3 R	5295	Branford, Conn.	3 R
5271	N.Y.	3 P	5295	N.Y.	1D 1E 1½ 1½E 2 3 R
5272	N.Y.	2 3 R	5296	N.Y.	1½ 2 3 R

5296	Kansas City, Mo.		3 R	5322	Chicago, Ill. (B)		6 R
5296	Fort Atkinson, Wis.		1½ 3 R	5322	S.F.		3 R
5296	Phoenix, Ariz.		3 R	5323	Chicago, Ill.	2 3 15 R	
5297	N.Y.	1D 1E	2 2D 3 R	5323	" "	(B)	6 R
5297	N.Y.		1E P	5324	Chicago, Ill.		2 3 R
5298	N.Y.		2 3 6 R	5324	Atlanta, Ga.		2 3 6 R
5298	Newark, N.J.		3 6 R	5324	Kansas City, Mo.		3 6 R
5298	L.A.		3 5 R	5324	N.Y.		3 R
5299	N.Y.		2 3 6 R	5325	Chicago, Ill.		2 3 6 R
5299	Schenectady, N.Y.		3 6 R	5326	L.A.		2 3 R
5300	S.F.		2 3 R	5326	Chicago, Ill.	1½ 2 3 R	
5300	Oakland, Calif.		3 R	5327	L.A.	1D 2 3 R	
5300	Sacramento, Calif.		3 6 R	5327	Chicago, Ill.	1D 2 P	
5300	San Mateo, Calif.		3 R	5327	" "	1 1D 1E 2 3 R	
5301	Chicago, Ill.	1½	2 3 6 R	5327	Newark, N.J.		3 R
5302	" "		2 3 6 R	5328	Chicago, Ill.	2 3 10 R	
5302	" "	(B)	2 3 6 R	5328	L.A.		3 R
5303	S.F.		1D P-R	5328	San Diego, Calif.		3 R
5303	San Jose, Calif.		3 R	5329	Chicago, Ill.		3 R
5303	Butte, Mont.		3 R	5329	N.Y.	2 3 6 15 R	
5303	N.Y.		1E 3 R	5330	Chicago, Ill.		3 R
5304	S.F.		2 3 6 R	5330	N.Y.		2 3 R
5304	Alameda, Calif.		3 R	5331	Buffalo, N.Y.	1½ 3 R	
5304	L.A.		2 3 R	5331	Washington, D.C.	1½ R	
5305	L.A.		3 R	5331	Philadelphia, Penna.		2 3 R
5305	Tacoma, Wash.		2 3 6 R	5331	Philadelphia, Pa.	1½ 2 3 R	
5306	N.Y.		2 3 R	5331	Kansas City, Mo.		3 B
5306	Elmsford, N.Y.		3 R	5332	N.Y.		2 3 R
5306	Atlanta, Ga.		2 3 R	5333	Chicago, Ill.		3 R
5307	N.Y.		1 2 3 6 R	5333	L.A.	2 3 4 6 R	
5308	N.Y.		2 3 6 15 R	5333	Newark, N.Y.		6 R
5308	Rochester, N.Y.		3 R	5333	S.F.		3 6 R
5309	Portland, Ore.		3 6 R	5334	L.A.		2 3 R
5309	L.A.		1E 2 R	5334	N.Y.		1E 3 R
5310	L.A.		2 R	5334	Chicago, Ill.		2 3 R
5311	N.Y.		2 3 R	5335	" "		2 3 R
5311	Rochester, N.Y.		1D R	5336	N.Y.	1½ 2 3 R	
5312	Philadelphia, Penna.		2 3 R	5336	Brooklyn, N.Y.		3 R
5312	Philadelphia, Pa.		3 R	5336	S.F.		3 R
5313	N.Y.		2 3 4 6 R	5337	Hartford, Conn.		3 R
5314	N.Y.		2 3 4 5 R	5337	New Britain, Conn.		3 R
5314	Chicago, Ill.		3 R	5337	N.Y.		2 3 6 R
5315	N.Y.		2 3 R	5337	N.Y.		2 3 6 15 P
5315	Newark, N.J.		3 6 R	5338	Buffalo, N.Y.		2 3 6 6E R
5315	Boston, Mass.		2 3 R	5338	S.F.		2 R
5316	Sacramento, Calif.		3 R	5338	N.Y.		2 3 R
5316	S.F.		3 R	5338	Brooklyn, N.Y.		3 R
5317	Bridgeport, Conn.		3 R	5338	Boston, Mass.		2 R
5317	N.Y.		2 3 R	5339	S.F.		2 R
5318	Philadelphia, Pa.		2 3 R	5339	Oakland, Calif.		3 6 R
5319	N.Y.		2 R	5340	L.A.		3 R
5319	Bridgeport, Conn.		3 R	5340	Phoenix, Ariz.		2 R
5319	New Haven, Conn.		3 R	5340	Brooklyn, N.Y.		3 R
5319	Newark, N.J.		6 R	5340	N.Y.		2 3 6 R
5319	L.A.		5 R	5340	Salt Lake City, Utah		3 6 R
5320	Chicago, Ill.		2 3 6 15 R	5341	S.F.		2 3 R
5320	Milwaukee, Wis.		2 3 6 15 R	5341	Berkeley, Calif.		3 R
5321	Chicago, Ill.		3 R	5342	N.Y.		2 3 R
5321	Ogden, Utah		3 6 R	5342	Philadelphia, Penna.		3 R
5321	Seattle, Wash.		1½ R	5342	Philadelphia, Pa.		2 3 R
5322	Chicago, Ill.		2 3 6 R	5342	S.F.		3 R