

METER STAMP SOCIETY

AUCTION

CLOSING DATE
FIRST METER STAMP SOCIETY AUCTION POSTPONED TO
closing date -- April 13, 1985 **MAY 31, 1985**

TERMS OF THE AUCTION

- Lots go to highest bidder at one increment over second highest bid. Fractional bids will be reduced to the nearest increment.
- In case of tie bid, earliest postmark prevails.
- Postage, insurance and handling costs will be added to the winning bids.
- Although there are no minimum bids, unreasonably low bids will be discarded.
- Successful bidders will be notified with a statement of winning bids and shipping charges. Lots will NOT be shipped until total payment is received.
- Unsigned bid sheets cannot be honored.
- Bids received after April 13, 1985 cannot be honored.

BIDDING INCREMENTS

\$1 TO \$20	--	\$0.50
21 TO 50	--	1.00
52 TO 100	--	2.00
105 TO 200	--	5.00
OVER \$200	--	10.00

MAIL BIDS TO:

Richard Stambaugh
Editor, Meter Stamp Society
23 Beverly Court
Tinton Falls, NJ 07724

A bid sheet will be found on the last page.

OUR
POSTAL
ZONE
IS
KANSAS CITY 10, MO.



Abbreviations used:

m or M = meter number	p or P = permit number
cut or cut sq = 2"x4" cut square	front = front of envelope
strip = 2" wide strip from top of cover	envelope
cover = entire envelope	lg = large
coll = collection	diff = different
c = cents	

For U.S. meters Simon/Walsh catalog numbers are used.

LOT NO. DESCRIPTION

- US
1. BA1, 1c M1043/P13, cut sq
 2. BA1, 2c M1043/P6, cover
 3. BA1, 2c M6/P4, cut sq
 4. BA1, 2c M1010/P1, cut sq
 5. BA1, 2c M1012/P7, front
 6. BA1, 2c M1028/P19, lg cut sq
 7. BA1, 2c M1036/P29, cut sq
 8. CA1, 2c m5, front
 9. CA1, 2c m1014, early date--Sep. 30, 1922, strip
 10. CA1, 5c cover marked "PER STEAMER PARIS"
 11. CA1, 12c m1444, cut sq(R)
 12. CA1, 12c m1860, registered cover(R)
 13. CA1, 14c m1623, apple green, cut sq(R)
 14. CA1, six covers/fronts with slogans from Curtis Pub. Co.(R)
 15. CA1, 2c m1886 with slogan, used by Postage Meter Co.(R)
 16. CA1-1, 4c+1/2c m5986, cut sq(VR) (photo)
 17. CA2b, 1c m7963, TM inverted, cover(R)
 18. CA2-3, m10, front
 19. CA2-3a, m7663, small TM, cover(VR)
 20. Another, front(VR)
 21. CA2-3b, m2930, "AD'L 1c PD" inverted, front
 22. CA3, 17c m5470, cut sq(R)
 23. CA3, 22c m5088, registered front(R) (photo)
 24. Another, cut sq(R)
 25. CA3b, 5c m6003 with "VIA AIR MAIL" above indicia, cover(R)
 26. CA4, 2 1/2c m2948, cover (ragged at top)(VR)
 27. Another(VR)
 28. Another(VR)
 29. CA4, 4 1/2c m7383, front
 30. CA4, 9c m7392, strip
 31. CA4, 18c m8628, strip (photo)
 32. CA6, 3c m8000, cut sq
 33. P-B ovals, prints from "reworked dies" per 1966 P-B Oval report by MSS member R.T. Needels, 1100 strips
 34. CB1, 1c m1291, attractive cover
 35. CB1-1, 1c + 1/2c m1332, front
 36. CB5, 1-1/2c m1508/p38, front
 37. Mail-O-Meter ovals (CB), 29 page album with 68 pieces, 24 of which are rated R, VR or RRR. A choice collection
 38. CD2, 3c m1078, front
 39. CE1, 2c m96 (front) and m120 (cut sq)
 40. CF4, 2c mP10027, cut sq(R) (photo)
 41. CG1, 2c, 3c, from m260 to m6800, 1 cover 18 fronts 2 cut sq
 42. CH3, 1c m878, 2c m806, 3c m862, three cut sq(R)

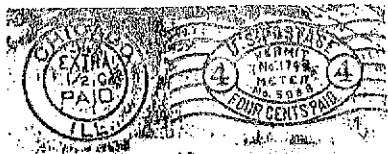
43. Continental-US Postal ovals (CF-CH), 50 page album with 73 pieces, 44 of which are rated R, VR or RRR. Choice
44. CJ1, M-3 (Albany), cut sq(R)
45. CK1, 8c m9654, front(R)
46. Small group of misc ovals--no common, noted: CA4 1-1/4c, CA6 2-1/2c, 3c, 4c, some CB, CD and CH
47. DB1A, 6c m11899, used by Postage Meter Co. with meter related slogan, front
48. DB1A, 1c m1152 with RETURN POSTAGE GUARANTEED, front (photo)
49. Coll of P-B type DB1 by value, 50 pieces mostly fronts and tapes, 21 values from 1c to 25c including 7c, 8c, 9c, 12c, 17c, 18c, 21c, 22c, and 24c(R)
50. DB5, 2c m9000, cut sq(2x5-1/2) with slogan(R)
51. DC9, 6c m5284, front
52. DD1, 6c m5005, front
53. Coll of types DB-DC-DD, 3000 strips with emphasis on towns, rates, varieties, etc.
54. DE2 SPECIMEN, six covers with different slogans
55. DF1, .03c m01004, six cut sq
56. DF2 SPECIMEN, three covers with different slogans
57. DF2, 18c m01430, registered cover(R)
58. Another, 1g piece(4x6) (adhesive tape stains discoloring portion of slogan (photo)
59. DF2, six covers (3 + 3 dups) with "SEC 34.66, PL+R" twice in indicia (redundant)
60. DF2a, m01024, cover
61. DF2-2, .02c+1c, cover(VR) (photo)
62. DF3, cut sq with "SEC 562 PL+R" twice in indicia (redundant)
63. DF4 or 7 SPECIMEN, three covers with different slogans
64. DF4, .26c m05221, registered front(R)
65. DF4, .28c m05160, cover(R)
66. DF4, .28c m05270, cover(R)
67. DF4-4, .02c+1c m05187, cover
68. DF7, 36c m55542, cover (photo)
69. DF7c, .01c with "P.-198" at base of TM, cut sq(2x6)
70. Small group of less common P-B types DE-DF, from DE3-1 to DF7-4, over 100 covers, some dup
71. DG1, .03c m1000, strip
72. Small group of International type DH1, mostly tapes, some covers, 45 pieces in all, 14 diff values incl 7c, 9c, 14c, 16c, 50c
73. EA8 NCR SPECIMEN tape
74. Small selection of 53 NCR type EA meter tapes and covers, 38 diff m nos plus 1961 Rhoades list of NCR meters
75. FA2, used on 1g registered piece
76. Another
77. FA3, used on 1g piece, adhesive tape stain touches (photo)
78. FB2 SPECIMEN, cover
79. FB2 with "WORLDS FAIR STA/NEW YORK" in TM, cover (hand cancel over meter impression) (photo)

80. Large Eagle (PB), outstanding coll of hand picked items broken down by towns (796 of 879 known), slogans, section nos, and varieties, mostly strips or tapes, 7250 total pieces
81. FC3, m100006, cut sq (VR) (photo)
82. GA4 or 5 (no TM) with WWII patriotic slogan, nice cover
83. Three NPM SPECIMEN tapes (similar to GB1) with diff slogans
84. GB1, m9473 with error "NEW YORK CITY/N.Y." in TM, cover
85. Another
86. GC1, two covers, one has "39 CFR 34.66" up at right, the other has "39 CFR 34.65(e)" up at left
87. Small group of less common Commercial Controls (type GC) covers, included GC1-2,-3, GC2 (2-7/8c), GC7-2, 35 covers with some dup
88. HA2 SPECIMEN tape
89. HA2 SPECIMEN cover with California Collectors Club slogan
90. HA3a, cover with "P.-516" at base of TM
91. HA3a, thirteen covers with "P.-306" at base of TM
92. HA4, cover with PB slogan (photo)
93. HA4A cover with inverted slogan (photo)
94. HA4A cacheted cover, "SEPAD/NATIONAL STAMP/EXHIBIT" slogan
95. HA4Ab, hour between indicia and slogan, nice cover
96. HA4Ac, "P-24" at base of TM, front
97. HA4Aa, "P-501" at base of TM, cover
98. HA4Af, "PERMIT 938" at base of TM, seven covers
99. HA4A-2 SPECIMEN, .02-1/2c+1/4c, three lg cut sq
100. HA4A-2, 120 covers (some fronts, strips), all diff meter nos.
101. HA4A-3, 28 covers, all diff meter nos.
102. HA4A-4 SPECIMEN, .02c+3/4c, two lg cut sq
103. HA4A-2 (cover) and HA4A-5 (front)
104. HA9, 15c, two covers with different meter nos.
105. HA10Ba, m656613 with "-PM" slogan, cover
106. HA12B, "MAILED FROM ZID CODE/11201" in TM, cover
107. HB1, m109960, cover(R)
108. Another(R)
109. HC1-2 SPECIMEN, .02-1/2c+1/4c, seven lg cut sq
110. HC1-4 SPECIMEN, .02c+3/4c, four lg cut sq
111. Group of P-B types with SURCHARGES, incl HA4-2,-3,-5,-8,-9, -10,-11, HA10-8,-10, HB4-2,-3,-4, HC1-2,-3, over 100 covers and strips, some dup
112. POSTALIA type JA SPECIMEN cover (photo)
113. JA1, cacheted cover with INTERPEX 1961 slogan
114. JA1a, m3 0030 with Postalia slogan, cover(R)
115. JA4, cacheted cover with 15th anniv. of Marshall Plan slogan
116. type KA SPECIMEN, cover
117. KA1, m010104, cover
118. Another
119. Another, front
120. KA2 SPECIMEN tape
121. KA2, m010106 with FRIDEN slogan,
122. KA5, m013551 with error "OIHO" for OHIO in TM, front
123. M(F), m100 experimental Mailomat, cut sq (photo)

- 124. M(FC)2, m101, proof cover
- 125. M(FC)2a, m51001 (imprint is over postal card stamp),
- 126. M(HA)2a, souvenir cover (photo)
- 127. P(FA)1, mP.O.90060, tape
- 128. Four used tapes, P(FB)1 m95784, P(FB)1a m93616, P(FB)1c m93643, P(FB)1g m96777
- 129. P(FB)1b, two diff proof tapes with "PARCEL POST SILVER JUBILEE" slogan
- 130. P(FB)1h, m96791 tape on piece with "NATIONAL LETTER WRITING WEEK" slogan
- 131. P(GA)2c, m6176 and m6935, two used tapes
- 132. Bundle of 135 tapes on piece, front, cover of Friden PO types P(KB)2 and P(KB)3 including 6 diff P(KB)2a
- 133. PD(E)3, postage due tape with no indication of Post Office usage in TM
- 134. Shoebox filled with various PO and Postage Due types, several early incl many with "POST OFFICE" spelled out in full

US COLLECTIONS BY METER NUMBER

- 135. CA2-3, 2c+1c, approx 200 fronts + cuts from no. 6 to 1499
- 136. Three boxes of approx 5000 P-B oval fronts with some cuts from no. 4 to 8902
- 137. CD1-CD4, approx 50 fronts + cuts from no. 1002 to 1130
- 138. CH3, approx 75 fronts + cuts from no. 500 to 884(R)
- 139. CH5, CH6, approx 100 fronts + cuts from no. 503 to 939
- 140. CK1, approx 200 fronts + cuts from no. 9113 to 9815
- 141. CB, CD, CF, and CG, box of 2300 strips
- 142. DC1, approx 100 fronts + cuts from no. 457 to 7700
- 143. DC5, 39 fronts + cuts from no. 902 to 1537
- 144. DC9, approx 300 fronts + cuts from no. 5009 to 5741
- 145. DD1, DD2, approx 300 fronts + cuts from no. 5000 to 5784
- 146. DE1-DE3, approx 1500 mostly fronts from no. 80002 to 89957
- 147. Lg box of type DE, est. 500 to 1000 mostly fronts
- 148. DF1-DF3, approx 800 fronts + cuts from no. 01001 to 01979
- 149. DF4, approx 75 fronts + cuts from no. 05001 to 05292
- 150. DF5-DF6, approx 600 fronts + cuts from no. 55508 to 56408
- 151. DF7, approx 350-400 fronts + cuts from no. 57005 to 59511
- 152. Lg box of type DF from no. 54000 to 55998
- 153. Lg box of types DB thru DF, nos. 10001 to 65396
- 154. DG2, approx 150 fronts + cuts from no. 1002 to 1379
- 155. Type DG, 29 page album with 84 choice pieces and box of strips (675) arranged by no. and variety
- 156. Box of 1600 strips, dups from lot 155.
- 157. DH1, approx 125 fronts + cuts from no. 6001 to 6196
- 158. DH1, 55 page album with 153 choice pieces; two boxes of over 3500 strips arranged by no., town and variety; one of the most complete collections known
- 159. Small coll of Flying Eagles, FA6-FA9, approx 200 fronts, cuts from no. 90015 to 90794
- 160. Flying Eagles, an outstanding FA coll; carton containing 3100 strips consists of 63% of the 963 known numbers of which 233 have a rarity factor of 7 or above; includes 160 out of 195 known towns



18



23



31



40

RETURN POSTAGE GUARANTEED



48



62



OUR POSTAL ZONE IS KANSAS CITY MO.

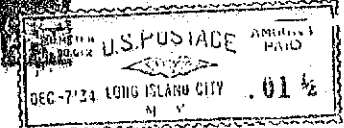


58

61



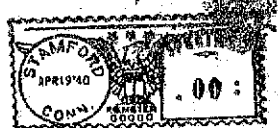
68



77

GET US MODERN FOR YOUR OFFICE COMPLETE OFFICE EQUIPMENT

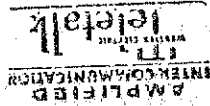
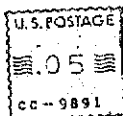
79



page six

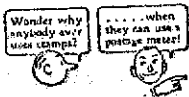


81

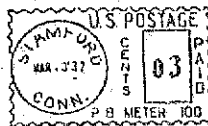


228

93

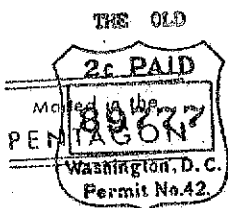


92



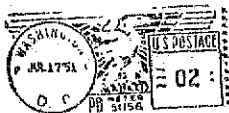
112

123



126

and THE NEW



THIRD CLASS



227



185

- 161. Flying Eagles, carton containing 1500 dups from lot 160.
- 162. Large Eagles, FB1-FB2, approx 700 fronts + cuts from no. 91002 to 93999
- 163. Large Eagles, nearly 2000 type FB mostly fronts from no. 91003 to 96994
- 164. GA-GC, two lg boxes of covers + fronts from no. 6000 to 51978, approx 700-800 pieces
- 165. HA2-HA3, lg box of covers + fronts in 100000 no. series, approx 700-800 pieces
- 166. HAB with value 2-7/8c, 81 mostly covers from no. 114103 to 606531
- 167. Type HA, two lg boxes in 107000-190600 number series, approx 1500+ covers + fronts
- 168. Type HA, two lg boxes in 300000 number series, approx 1500+ covers + fronts
- 169. Type HA, two lg boxes in 600000 number series, approx 1500+ covers + fronts
- 170. Type HA with lg digit meter number, lg box in no. sequence, 700-800 covers + fronts
- 171. Type HB, three lg boxes of covers + fronts from no. 200010 to 499980 and no. 700078 to 748970, approx 2200+
- 172. Type HC, three lg boxes in 500000, 520000 and 560000 number series, approx 2200 covers + fronts
- 173. Type HC, three lg boxes in 800000 and 900000 number series, approx 2200 covers + fronts
- 174. HD2-HD3, shoe box of approx 500 fronts from no. 1000449 to 1520584
- 175. Type HD, lg box of approx 700-800 covers + fronts from no. 1000052 to 1249896
- 176. Postalia, type J by meter no., lg box of approx 700-800 covers + fronts
- 177. Friden type KA1-KA7, box of about 700 covers, fronts, cuts from no. 010106 to 219287
- 178. KB1 and KB3-KB4, box of about 650 covers, fronts from no. S200029 to F320961
- 179. KC1-KC2-KC2a, 18 covers, fronts, cuts from no. 013204-013947
- 180. KD1, bundle of about 200 covers, fronts, cuts from no. 700052 to 721165
- 181. KB and KE, box of about 700-800 covers from no. 210003 to 8700196
- 182. Coll of MAILOMAT covers from no. 51002 to 51158, approx 100-120 diff numbers plus dups, over 350 in all

FOREIGN

- 183. Australia, complete set of seven cacheted first day covers for FRAMA meter vending machines, 22 Feb 1984
- 184. Another set as above
- 185. Canada, P-B souvenir cover (photo)
- 186. Canadian TOWNS, box of 430 strips
- 187. Faroe Islands, 39 covers, 14 diff meter nos. (some ragged)
- 188. Great Britain, lg lot of all types and nos. of GB meters, approx 600 covers and 1000+ strips

The following nine lots are US type HA4 meter covers with slogans relating to the UNITED NATIONS.

189. New York, "SUPPORT/ THE (UNITED NATIONS)"
190. Baltimore, "THE U.N./WORKS FOR YOU, 10, 1945-1955"
191. New York, "FOR ALL THE WORLD'S CHILDREN USE UNICEF GREETING CARDS"
192. Kansas City, "OUR BEST HOPE FOR PEACE WITH FREEDOM-- UNITED NATIONS"
193. St. Louis and Keene, NH, "UN/WE BELIEVE", two covers
194. Another as above
195. Another as above
196. Minneapolis, cacheted cover, "ORGANISATION MONDIALE DE LA SANTE/ 1948-10-1958/ WORLD HEALTH ORGANIZATION"
197. New York, "UN/ WE BELIEVE", (HA4-2)
198. UN, lg group of UN and UN-related covers including permits as well as meters, NY, Geneva, Vienna plus HQ of diff agencies throughout world, most covers are large clasp envelopes, 146 covers plus misc pieces, some dup
199. Similar to above but material relates to other (non-UN) international orgs such as EUROPA and OPEC, 31 covers
200. Lg box stuffed with foreign, much dup but lg variety

MISCELLANEOUS

201. Lg coll of US BICENTENNIAL related and patriotic meter covers, contains many pages of notes/lists, the main part of the coll is housed in acetate pages, also included are lg group of dups, 1200-1500 covers
202. Two box coll of approx 500 covers and 200 cuts/strips of US WORLD WAR II slogans
203. Coll of US TOWNS by state, also station names and zip codes, approx 1500-2000 fronts/covers in two boxes
204. Coll of New Jersey towns, approx 500 pieces (mostly fronts)
205. SECTION NUMBERS, album of 157 pages and box of 2500 strips arranged by type and then by section
206. STATION NAMES, carton containing probably the most complete coll in existence, was the basis of W. Olson's report in Bulletin 123 (1969), 1000 strips with 4000 dups
207. Seven diff combinations of meter type with zip code in TM (PB2c to HC4Aa) with dups, 19 covers and strips
208. MFZC, over 100 covers, fronts, cuts of various types, zips and meter nos., some dup but wide variety
209. Coll of meter ODDITIES (double impressions, meter/adhesive stamp combos, bi-colors, etc), approx 150 covers
210. MEISEL METERS, coll of the philatelic fabrications of Henry Meisel (see Bulletins 172-3, 174), 76 covers including 30 of the 48 listed types and 3 unlisted types, also 5 foreign and 4 related, 33 dups
211. State cigaret tax revenue meters from Rhode Island and New York, 31 diff nos., 41 pieces on cellophane
212. Lg bulk lot of misc US, noted: box of towns, box of unsorted slogans, many ovals, many non-PB types (and many hours of sorting)

213. Similar to above but smaller lot of misc US, some officials,
many ovals

LITERATURE

214. MSS member R. T. Needels' 1966 detailed study of US ovals
THE FIRST US OVAL POSTAGE METERS
215. no lot
216. A HANDBOOK OF UNITED STATES POSTAGE METERS INCLUDING
SLOGANS, Steiger, 1938
217. no lot
218. POSTAGE METER CATALOGUE, Steiger, 1st ed., 1931
219. Another copy
220. PHILOMETER COMPENDIUM, Whitebourgh, 1957
221. HOW TO COLLECT POSTAGE METER STAMPS, Harsh, 1963
222. METER POSTAGE STAMP CATALOG, Harris, 1st ed. 1935
223. Another as above but 2nd ed. 1937
224. METER STAMPS OF GREAT BRITAIN AND IRELAND (EIRE), Mann
2nd ed. 1972
225. (Non meter) INTERNATIONAL MACHINE CANCELS 1888 TO 1910,
Bond

ADDENDA

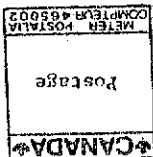
226. Type GCl with part of town name in TM removed, cover (photo)
227. Type HA12A with part of town name in TM removed, cover
(photo)
228. Type HA2, two covers (100210, 100302) and one strip (100460)
229. Type CB1, CB7, approx 100 fronts + cuts from no. 1007 to 1363

END OF SALE

STAPLE

POSTED TO
MAY 21 1988
CLOSING DATE

Richard Stambaugh
Editor, Meter Stamp Society
23 Beverly Court
Tinton Falls, NJ 07724
U. S. A.



FOLD

FOLD

PRICES REALIZED IN THE FIRST MSS AUCTION

Below are listed the prices realized in the first MSS meter auction which was distributed to members as a supplement to our last Bulletin. We are pleased to say that gross sales from the auction were over \$1000 -- \$1088 to be exact. This was quite gratifying, and we feel that had circumstances been slightly different, the results would have been even stronger. As it was many great bargains were made. A large number of lots sold for well below what their rarity would indicate, but then a few lots received unexpectedly intense bidding and sold for more than was anticipated.

There were several lots that were withdrawn (WD) because of weak bidding. These were mostly bulk lots/collections containing large numbers of very rare meters, several of which were estimated to be valued at \$1000 and more apiece. For the most part these lots were not adequately described in the catalog, and some of this material may appear in future auctions with more detailed descriptions.

Several members wrote to say they were reluctant to bid because they had no idea of market value and did not want to embarrass themselves by bidding too high or too low. These people are not alone. There is no established market for meters. This auction, in a sense, will help establish one. In future MSS auctions we will list suggested or minimum bids -- something we did not want to do originally because of our own lack of knowledge of market values.

<u>LOT</u>	<u>PR</u>	<u>LOT</u>	<u>PR</u>	<u>LOT</u>	<u>PR</u>	<u>LOT</u>	<u>PR</u>	<u>LOT</u>	<u>PR</u>
1	2.50	47	1.50	67	6.50	136	21.00	189	2.50
2	8.00	48	1.00	68	1.00	137	4.50	190	2.50
3	4.00	49	6.00	69	2.50	138	5.00	191	2.50
4	4.00	50	7.00	92	1.00	139	4.50	192	2.50
5	2.00	51	1.00	93	2.50	140	3.00	193	2.50
6	2.50	52	1.00	94	1.00	141	WD	196	2.50
7	2.50	53	WD	95	1.50	142	3.50	197	2.50
8	1.00	54	3.00	99	1.50	143	3.00	198	76.00
12	5.50	55	1.50	102	1.00	144	4.50	200	12.00
13	WD	56	2.50	104	1.50	146	10.50	201	27.00
14	WD	58	1.00	106	4.00	154	5.50	202	62.00
15	3.00	59	1.00	107	2.00	155	WD	203	21.00
16	5.50	60	1.00	109	4.00	158	WD	204	18.00
17	2.50	61	3.50	110	2.50	159	37.00	206	WD
18	2.00	63	2.50	111	5.50	160	WD	207	3.50
19	9.00	64	2.00	112	2.50	161	WD	208	4.00
20	3.00	65	2.00	113	3.00	162	21.00	209	5.50
21	2.50	66	2.50	114	1.00	163	43.00	210	8.00
25	3.00	67	1.50	115	1.00	165	11.50	211	2.50
26	2.50	70	5.50	116	1.50	167	22.00	212	26.00
27	2.00	71	3.00	117	5.50	169	5.00	213	14.00
32	5.50	73	2.00	119	1.00	171	16.00	214	26.00
33	WD	74	5.50	120	1.50	172	16.50	216	2.50
34	1.50	75	3.00	122	1.00	173	14.50	218	7.00
35	2.00	76	3.00	123	6.00	174	3.00	219	5.50
36	8.00	77	10.50	124	4.00	175	10.50	221	5.50
37	WD	78	2.00	126	2.50	176	WD	224	5.00
38	1.50	79	5.50	127	8.00	179	3.00	226	2.00
39	8.00	80	WD	129	2.50	180	2.00	227	1.00
40	10.50	81	13.00	130	2.50	182	76.00	229	4.00
41	13.00	82	1.50	131	2.00	185	3.50		
43	WD	83	2.50	132	5.00	186	WD		
44	5.50	84	1.00	133	1.50	187	1.50		
46	16.50	85	1.00	134	25.00	188	27.00		

+ + + + + + + +

+ + + + + + + +