

CLOSING DATE IS 25 MAY 1991

TERMS

1. Lots go to the highest bidder at one increment over the second highest bid. Fractional bids will be REDUCED to the nearest increment.
2. In case of tie bids, earliest postmark prevails.
3. Prices in the right column are MINIMUM BID LEVELS.
4. If only one bid is received for a lot, it will be sold for the minimum.
5. "Buy" bids and bids below the Minimum Bid will be declined.
6. A commission of 10% for MSS members and 15% for non-members will be added to all successful bids.
7. Postage and insurance costs will be billed to the buyer.
8. An invoice will be sent each successful bidder; lots will be forwarded upon receipt of full payment.
9. All successful non-US bidders must pay in US funds.
10. Refunds will be given for lots not accurately described; such lots must be returned within ten days of receipt.
11. A "P" next to the Minimum Bid means the lot is illustrated.
12. Photocopies of lots are available for ten cents per page plus SSAE.
13. The placing of a bid constitutes acceptance of these terms.

BIDDING INCREMENTS:

\$1 - 19.99 = \$0.50
 20 - 39.99 = 1.00
 40 - 79.99 = 2.00
 80 -199.99 = 5.00

MAIL BIDS TO:

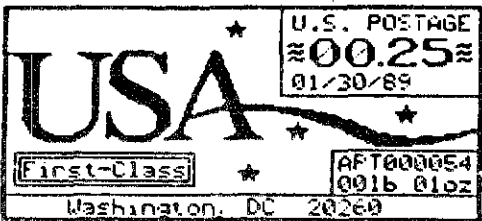
David A Clark
 PO Box 060807
 Palm Bay FL 32906

A separate bid sheet
 is enclosed.

DEFINITIONS USED:

M or m = meter number
 P or p = permit number
 c = cent(s)
 cut = 2" x 4" cut square
 2" x 6" with slogan
 small cut = less than 2" x 4"
 strip = 2" wide strip from top
 front = face only from cover
 cvr = cover (entire envelope)
 coll = collection/accumulation
 dup = duplicate or duplication
 diff = different
 incl = includes or including
 w/ = with

FIRST DAY OF ISSUE



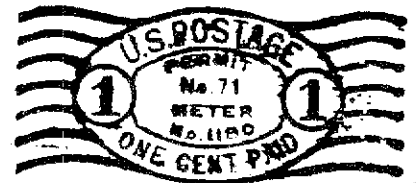
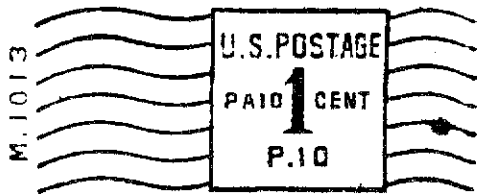
WASHINGTON, D.C.
 MARTIN LUTHER KING STATION

X lot 152

<u>UNITED STATES (Simon/Walsh catalog, incl 1991 addendum, used)</u>		<u>MIN BID</u>
1.	BA1, 1-cent green, M 1013, P 10, cut.	6.00 P
2.	BA1, 2-cent red, M 4, P 6, cut	6.00
3.	BA1, 2-cent red, M 7, P 2, cut, torn UR and creased.	6.00
4.	BA1, 2-cent red, M 1028 P 19, on large piece.	3.50
5.	CA1, 12-cent red, cut. (R)	3.50
6.	CA1, 14-cent green, cut, faint print, blotch on TM (R)	2.50
7.	CA1-1, 1-cent brown, "EXTRA 1/2c PAID" in TM, cut.	3.00 P
8.	CA1-1, 4-cent brn with "EXTRA 1/2c PAID" in TM, cut. (VR)	5.00
9.	CA1-1, 4-cent brown, same as above, undersize cut. (VR)	12.50
10.	CA1-2, 1-cent green, "ONE/CENT/ONLY" in TM, cover.	2.00 P
11.	CA1-2, 1-cent blue, "ONE/CENT/ONLY" in TM, cover.	2.50
12.	CA2a, 2-cent blue, P-144 at bottom of TM, strip (VR)	7.50
13.	CA2-3, 4-cent brown, "AD'L 2c PD", strip	2.50
14.	CA3, 7-cent red, toned strip. (R)	5.50
15.	CA3, 17-cent red, cut. (R)	4.50
16.	CA3, 18-cent red, no TM, strip. (R)	6.50 P
17.	CA3, 19-cent red, no TM, strip. (R)	6.50
18.	CA3, 22-cent red, cut. (R)	7.50
19.	CA4, 1 1/4 cent red, strip.	3.50 P
20.	CA4, 2 1/2 cent blue, strip. (VR)	5.00 P
21.	CA4, 5-cent red, undersize cut.	3.00
22.	CA4, 18-cent red, cut.	4.50
23.	CA4, 21-cent red, cut. (R)	6.50
24.	CA4-1, 22-cent plus 2c, M 5088, cut. (VR)	10.00 P
25.	CA6, 3-cent purple, cut.	4.50
26.	CB1, 2-cent red, cut, light print.	1.00
27.	CB1, 3-cent purple, front, small tear, brittle.	8.50 P
28.	CB1, 4-cent brown, strip, poor TM. (R)	6.50
29.	CF3, 2-cent red, M 519, P 17, strip. (R)	20.00
30.	CF4, 2-cent red, Meter M10097, cut.	2.00
31.	CF4, 2-cent red, Meter P10031, cut.	5.00 P
32.	CH3, 1-cent purple, strip. (R)	3.50
33.	CH5, 1-cent purple, strip.	2.50
34.	CH5, 3-cent red; one cover, one cut.	1.00
35.	CH5-1, 2-cent purple, "AD'L 1c PD" in TM, strip.	2.00
36.	CH5-1, 2-cent purple, "AD'L 1c PD", cut.	4.00
37.	CH6, 1 1/2 cent red, strip.	6.50
38.	CJ1, 3-cent purple, strip, blotchy print. (R)	8.50
39.	CK1, 5-cent red, cut, Air Mail border. (R)	2.50 P
40.	DB1A, 7 & 13 cent, blotchy tape on strip. (R)	3.50
41.	DB2, 2c, 10c, 20c, 20c, tape. (R)	3.50 P
42.	DB2, 1c and 15c blue, cut, over-cancelled. (R)	3.50
43.	DB5, 2-cent red, M 9000, slogan "X-Adhesive", strip. (R)	20.00
44.	DB6, 1-cent green, M 9001, wide spacing, small TM, cut with remnant of slogan. (VR)	20.00
45.	DB6, 1-cent green, M 9002, wide spacing, small TM, cut, top tear not affecting meter print. (VR)	10.00 P
46.	DB8, 1-cent purple, M 9006, narrow spacing, large TM, cut with partially severed slogan. (VR)	20.00
47.	DC1, 1 1/2 cent red, front.	5.00
48.	DC1, 3-cent red, M 796, cut.	2.00
49.	DC5, 2-cent red, strip. (R)	4.50
50.	DC6, 3-cent red, strip. (R)	5.00
51.	DC9, 4-cent red, strip. (R)	5.00 P
52.	DC9, 8-cent red, strip. (R)	4.00
53.	DC10, 3-cent red, TM BIC, strip.	3.00



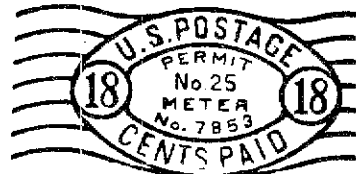
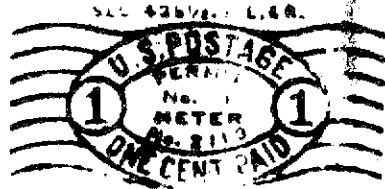
1



7



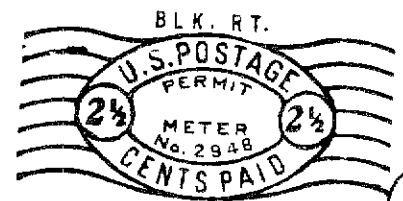
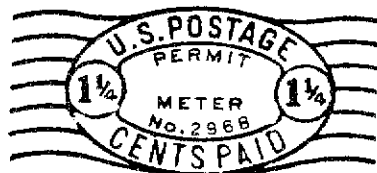
10



16



19



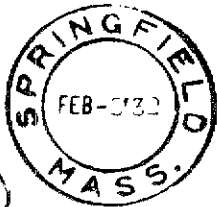
20



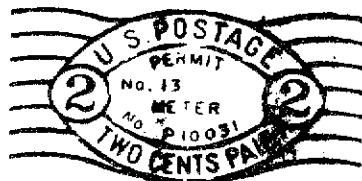
24



27



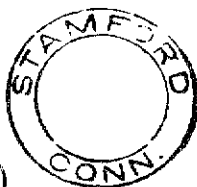
31



39



41

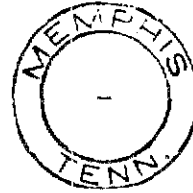


45



51

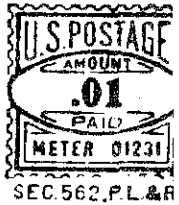
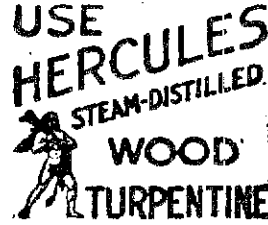
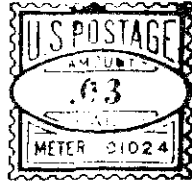
54.	DD1, 7c and 8c purple, tape. (VR)	7.50
55.	DD1, 9-cent purple, strip. (VR)	8.50 P
56.	DD1, 12-cent pair, purple, strip. (R)	4.50
57.	DD2, 13-cent purple, thinned tape. (VR)	5.00
58.	DD2, 3c, 3c, 20cent purple, tape. (R)	4.50
59.	DD2, 6c, 12c, 24cent purple, tape. (VR)	8.00
60.	DD2, 21-cent purple, no TM, strip. (R)	4.50
61.	DE1B, 11-cent red, three prints, registered, cut.	10.00
62.	DE2a, 3-cent blue, P.2 at bottom of TM, strip.	5.00
63.	DE2-1, 2-c red, "AD'L 1/2c PD" btw TM and indicia, cover.	4.00 P
64.	DE3, 4 1/2 cent blue, tape. (VR)	7.50
65.	DF1, 3-cent blue, M 01004, cut.	2.00
66.	DF2, 18-cent M 01430, w/o TM, on registered cover.	2.50
67.	DF2, 18-cent purple, strip (R) with Penn RR 100th Anniversary slogan.	3.50
68.	DF2a, 3-cent red, meter number lower and wider, cover.	5.00 P
69.	DF2-1, 1-cent purple. "ONE CENT ONLY" in TM, cut.	5.00 P
70.	DF2-2, 2-cent red, "AD'L 1c PD" below indicia, strip.	10.00 P
71.	DF4, 3 1/2 cent red, strip. (R)	3.50 P
72.	DF4, 4-cent blue, strip. (R)	3.50
73.	DF4, 8-cent purple, strip. (R)	3.50
74.	DF4, 9-cent purple, strip. (R)	3.50
75.	DF4, 12-cent red, strip. (R)	3.50 P
76.	DF4, 15-cent red, strip. (R)	3.50
77.	DF4, 23-cent red, no TM, strip, over-cancelled. (R)	7.50
78.	DF4, 28-cent purple, cut, torn in half and repaired with tape on reverse. (R)	4.50
79.	DF4, 29-cent black, Registered cover. (R)	5.00
80.	DF4-3, 2-cent red. "AD'L 1c PD" below indicium, strip.	4.50 P
81.	DF4-4, 2-cent red. "AD'L 1c PD" in TM, strip.	4.00 P
82.	DF5, 9-cent purple. Federal Reserve Sta, strip. (R)	3.50
83.	DF6, 12-cent red, cut. (R)	4.50
84.	DF7, 3-cent bi-color (red and blue) with slogan, makes red, white and blue WWII patriotic cover.	2.00
85.	DF7, 7-cent red, cut, Air Mail border.	4.50
86.	DF7, 8-cent green, with slogan, cover. (VR)	5.00
87.	DF7, 12-cent purple, strip. (R)	3.50
88.	DF7, 21-cent red with PRESORTED/FIRST-CLASS slogan.	1.00
89.	DF7c, cover with P.-299 at bottom of TM.	2.00
90.	DF7c, 3-cent red, P.-273 in base of TM, cover.	2.00 P
91.	DF7f, 2-cent blue, City and State at top of TM, bottom blank, unlisted city for variety, cover.	5.00
92.	DF8, 4-cent gold, with 50th Anniversary slogan, cover.	2.50 P
93.	DH1, 2c and 7c purple, tape. (VR)	6.50
94.	EA21, NCR for registered mail only, M 1359.	5.00
95.	EA28Ab, no bottom section but with user's name, proof.	3.00
96.	EA28Ab, same as above, but 19-cent bi-color print on tape.	5.00
97.	EA28Af, user's name omitted, slightly smeared tape.	5.00
98.	FA2, M 90011, tape. (VR)	15.00 P
99.	FA6b, M 90128 with REGISTERED/MAIL at left, tape.	8.50
100.	FA7 Flying Eagle cover, rare meter number 90212.	5.00 P
101.	FA7a, M 90122 with hour slug in vert at left, tape.	3.50
102.	FA9b, M 90485 with hour slug w/o lines, tape.	7.50
103.	FB2, 33-cent orange, ornaments in TM, cut.	1.00 P
104.	FB2a, 3-cent red with "PERMIT 226" at left, strip.	4.50
105.	FB2d, two tapes, hour slug and vert lines at left.	1.00
106.	FC3, 00-cent proof print, M 100003, NY on #10 cover. (VR)	30.00 P
107.	FC4, 00-cent proof, M 100012, NY, tape, small stain. (VR)	25.00 P



BLK. RT. ADL 1/2¢ PD.

55

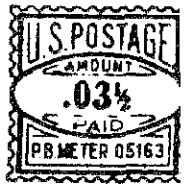
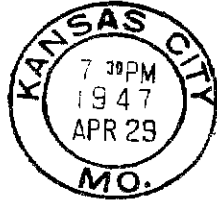
6



68

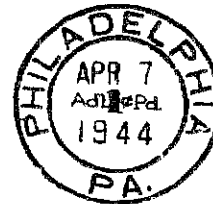
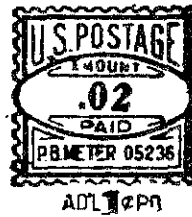
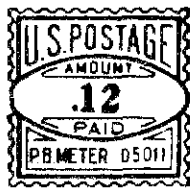
69

OUR POSTAL ZONE IS KANSAS CITY MO



70

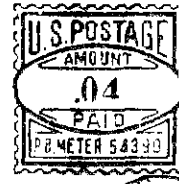
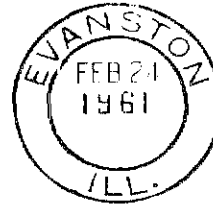
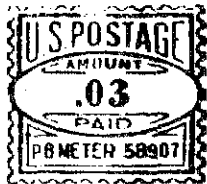
71



75

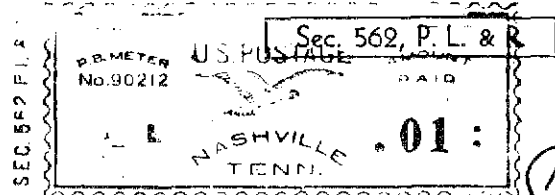
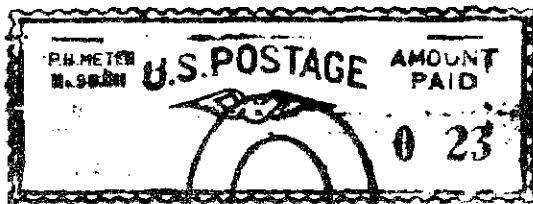
80

81



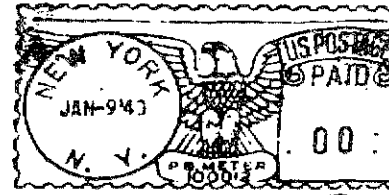
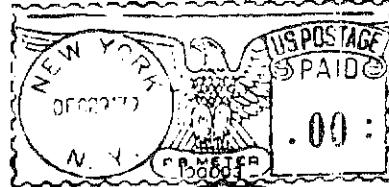
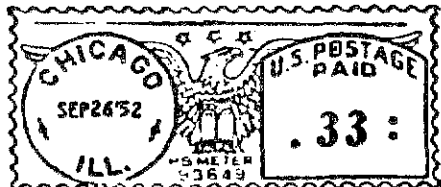
90

90



98

100



103

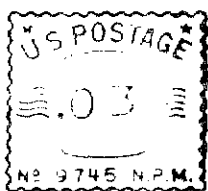
106

107

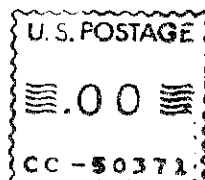
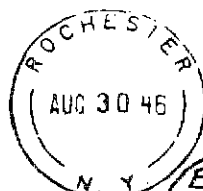
108.	GA3, 24-cent blue, M 6036, tape. (VR)	10.00
109.	GA5b, 1-cent red, M 6735. "BREMERTON, WASH/P.S.N.Y." on card, over-cancelled.	6.50
110.	GB1b, 3-cent red, Permit number in base of TM, cover.	2.00 P
111.	GB1d, 3-cent red, time slug at left, cut.	8.50
112.	GC1, Rochester Hobby Show demo meter, 2 covers, one tape and illustrated brochure.	2.50 P
113.	GC1, two cuts, NEW YORK CITY error and (space) CHESTER/PA off-center TM.	2.50 P
114.	GC3, 3 6/10 cent black, cover.	1.50
115.	GC4, 0.00 proof, M 6203, tape. (VR)	20.00 P
116.	GC8a, CHICAGO ILL at top of TM, bottom partly removed, cut.	2.00
117.	GC8a, 2 covers, City and State at top of TM, bottom partially removed; Topeka, Kansas.	3.00
118.	HA1, .00 proof, M 100019, tape.	15.00
119.	HA1, .00 proof, M 100022, Defense Bonds slogan, tape.	5.00
120.	HA3a, permit number at base of TM, 1 front, 1 tape.	2.00 P
120A.	HA3b, hour slug in vertical lines at left, cover.	2.50
121.	HA4Aa, M 143761 with user's initials (OC) in TM, strip.	7.50
122.	HA4Ab, hour slug and vertical lines at left, cover.	1.00 P
123.	HAS, 02 5/8 cent, M 196535, cut.	1.00
124.	HA9, 15-cent red, SOMERDALE/N.J. cover.	7.50 P
124A.	HA9, 13-cent black, BOSTON/MASS, M 399694, cover.	7.50
125.	HA9, 13-cent red. SOMERDALE/N.J. cover, over-cancelled.	3.00
126.	HA10A&B, off-center TM: (Space) HOLLISTON/MASS. and (Space) RONKONKOMA/N.Y., two covers.	7.50
127.	HA10B, 00-cent proof on card, error: V.A. for Virginia.	2.00 P
128.	HA10B, ZIP Code at base of TM, unlisted variety, cover.	2.00 P
129.	HA11, 0.05 cent black, M 607691, strip. (VR)	25.00
130.	HA12B, disintegrating town circle, cover.	2.00 P
131.	HB1, 3-cent red, M 109960, strip. (R)	12.50
132.	HB1, same, print on stained, forwarded cover.	5.00 P
133.	HB4, Meisel fabrication, lozenges in TM, Air Mail cover.	3.00
134.	HB4, same as above, strip.	1.00
135.	HB4, 19-cent red, EDUCATIONAL/MATERIALS slug at left, tape.	2.00
136.	HC1, lovely black print on small window envelope.	2.00
137.	HC4A, SPECIMEN tape.	3.00
138.	HC/HE hybrid of two types, HC8B meter number, HE1 value box, unusual but light print, cover.	15.00
139.	HE1, early HE meter, small meter numerals, cover.	2.00
140.	KA1, short curved lines at left of frame, cover.	10.00 P
141.	KC2, used in conjunction with UPS meters, scarce, cover.	5.00
142.	KC2, 8-cent red, single circle TM, strip.	2.00 P
143.	KE3, cover with THIS ITEM/ELECTRONICALLY/WEIGHED slogan.	2.00 P
144.	LA1, full state name CONNECTICUT in TM, cover.	1.00
145.	LA1d, DALLAS-FORT WORTH AIRPORT/75261, cover, torn right edge not affecting meter print.	2.00
146.	LA3a, missing TM, Hasler slogan, tape.	2.50 P
146A.	LB1Bb, DALLAS-FORT WORTH AIRPORT/75261, proof tape on card.	2.00

SPECIAL PURPOSE METERS

147.	M(F), 3-cent red, experimental Mail-o-mat, cut.	5.00 P
148.	M(FC)2, 3-cent red, M 101, Stamford, cover.	20.00
149.	M(FC)2, 3-cent red, M 51001, New York, cover.	20.00 P
150.	M(FC)2a, 3-cent red, M 51001, New York PO, tape (?)	20.00
151.	PV(B)1, Jacksonville experimental self-service meter, white tape plus yellow receipt copy, miscut with "U.S. POSTAGE" at bottom. (VR)	100.00 P

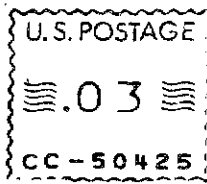
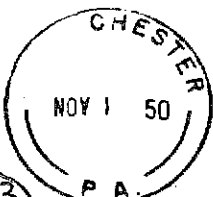
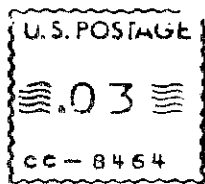


MAILED AT
EIGHTH ANNUAL
• ROCHESTER •
HOBBY SHOW
AUGUST 1946

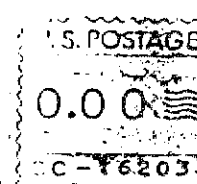


110

Ex 112

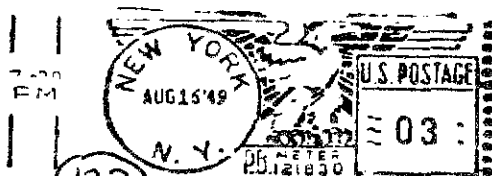


113



115

Ex 120

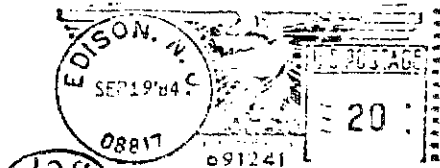


122



124

127

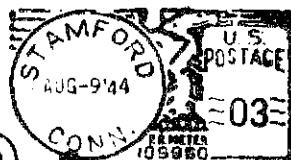


128



130

132

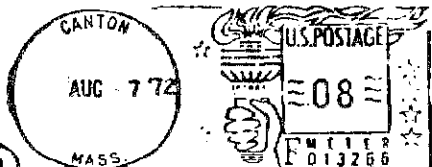


Automate
with Friden

140

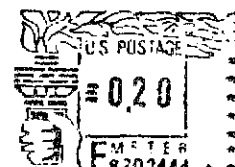
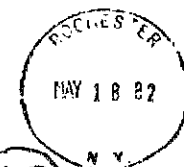


142



THIS ITEM
ELECTRONICALLY
WEIGHED

143

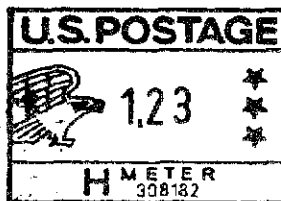


The latest arrival from Hasler
The small F 101 Mailmaster Franking Machine



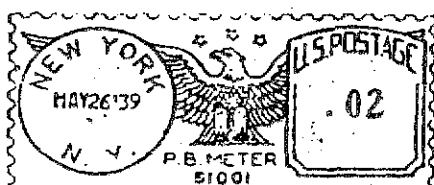
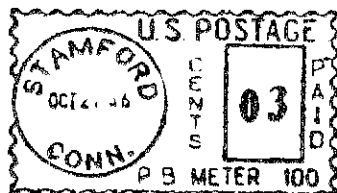
OCT-286

146



CLASS	100	00
1973 JUN	13	P ME
JACKSONVILLE FL	0000	01
	0000	11
	0000	08

147

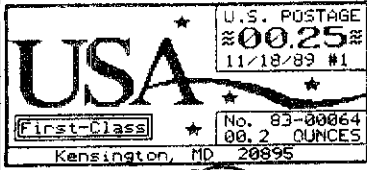


149

151

152.	PV(C)1A, AUTOPOST, matched set of cacheted FDC, 8/23/89, Washington machines 82 and 83, tied with red CDS.	300.00 P
153.	PV(C)1Ab, AUTOPOST First Class tape with unsevered ad label, Kensington 83, plus receipt.	175.00 P
154.	PV(C)1B, AUTOPOST Priority Mail, first day usage, on large Priority Mail cover, receipt included.	50.00
155.	PV(C)2B, AUTOPOST Priority Mail tape with bar code, Washington 83, with unattached ad label. (VR)	100.00 P
156.	AUTOPOST test label without bar code (R)	100.00 P
157.	P(FB)2a, CHURCH ST. ANNEX at top, purple tape.	5.00
158.	P(FB)2f, WASHINGTON, D.C./BENJ. FRANKLIN STA. tape on piece.	2.00
159.	P(FB)2h, PARCEL POST at bottom of TM, tape.	3.00
160.	P(GA)4Bc, WASHINGTON D.C./PARCEL POST, tape.	2.00 P
161.	P(GA)2c, PARCEL POST at bottom of TM, 2 tapes.	5.00
162.	P(HA)4A, Unlisted variety: BOSTON, MASS./PO/ESSEX STA. tape.	5.00 P
163.	P(HA)10B, Two covers, with and without PO in TM.	3.00 P
164.	P(HA)12A, ALLENTOWN/PO/PA. front. (R)	4.00 P
165.	P(HC)3A, Errors: MABELTON/USPS/GA and BUTTLER/USPS/NJ, two 0.05 mint tapes.	4.00 P
166.	P(HC)3Bb, Error: HO for Ohio in TM.	2.00
167.	P(HC)3Bc, LOS ANGELES OLYMPICS/1984, mint tape.	20.00 P
168.	P(HE)1a, FORT GORDON/USPS/GA, M 6131789, cover. (R)	10.00 P
169.	P(JA)1, Postalia with US/PS in TM. Mint tape. (R)	20.00
170.	P(KB)1, Error: FORT JEFFERSON STATION/PO/N.Y., tape.	2.50
171.	P(KE)3Ba, Knoxville World's Fair meter, mint tape.	5.00 P
172.	PC(A)1, Flushing NCR 023. Tape.	5.00 P
173.	PC(A)2, Flushing NCR 192 on cover, tied with red CDS.	10.00
174.	PC(B)1, M 7000027, Philadelphia, tape.	5.00 P
175.	PC(C)1A, Vienna/VA, USPS 123456, value 000.05. Tape.	5.00 P
176.	PC(C)1C, TAMPA/FL PO 33630, I8600134, tape used on piece, tied by black circular date stamp.	2.00
177.	PC(C)1C, TAMPA, experimental ZIP 33699, postmarked tape.	5.00
178.	PD(B)HA4A, m169333, San Francisco, surface thin, UL. (R)	7.50
179.	PD(B)HA4A, same as above, San Francisco. (R)	20.00 P
180.	PD(D)HA4A, Postage due tape, Chicago, orangish-red, tape.	10.00
181.	PD(D)HA4A, Chicago, 1952, light red, tape.	2.00
182.	PD(D)HA4A, New York, 1952, purple, tape.	2.50 P
183.	PD(E)HA4A-A, Syracuse, 1954, POST OFFICE in base of TM.	2.00 P
184.	O(HC)1Aa, Washington, 1978, Parcelmatic lines at left, tape.	2.00 P
185.	O(HC)1B, Official meter with small wavy lines, cover.	2.00
186.	O(HC)2, FORT BENJAMIN HARRISON/IND. tape.	2.50
187.	O(HC)2c, TM missing, tape on piece.	2.00
188.	O(HC)2e, FAYETTEVILLE/USPS/NC	3.00
189.	O(HC)3, 2 tapes on mailing tag, one cover.	2.00
190.	O(HE)1A, WHITE SANDS MISSILE RANGE/N. MEX. cover.	2.00
191.	O(HE)Bb, missing TM, used at APO, large manila cover.	2.50
192.	O(HE)Bd, Meter 6250548 with US PS mostly removed from TM.	3.00 P
193.	O(JA)1, APO NEW YORK/09611, M 611730.	2.00
194.	O(KE)1, Missing key letter; 2 covers, one tape.	9.00
195.	O(KE)2E, (Space) SAN FRANCISCO, off-center TM, cover.	2.50
196.	O(KG)2, light tape on cardboard piece.	3.50
197.	O(KG)3c, six different proof prints on card stock.	8.50
198.	O(LA)1A, THIRD/CLASS slogan on large white official cover.	2.50 P
199.	O(LA)1Ab, Hasler official with inverted stars, cover.	2.50 P
200.	O(LA)2A, Hasler official, cover.	2.00
201.	O(LA)3A, Hasler official, CRESTVIEW/FL. strip.	2.00

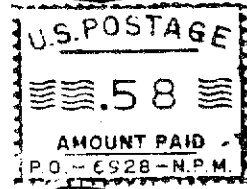
We Deliver...
United States Postal Service



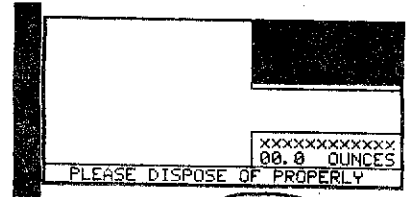
153



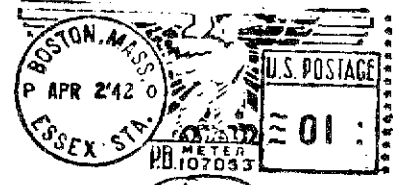
155



160



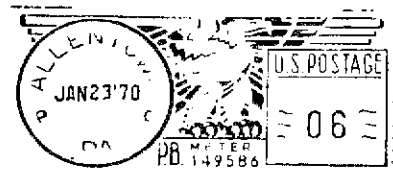
156



162



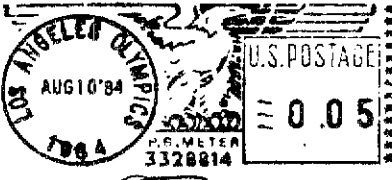
Ex 163



164



Ex 165



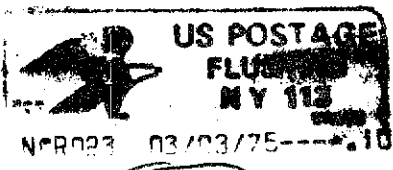
167



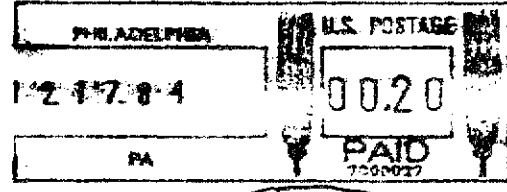
168



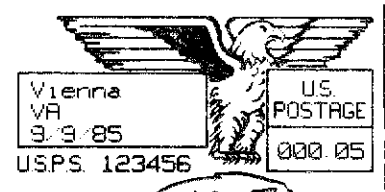
171



172

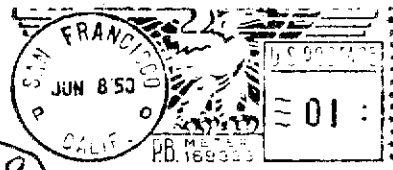


174



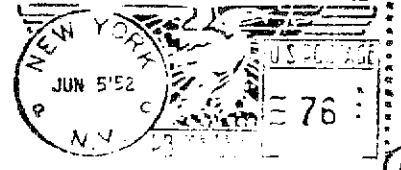
175

POSTAGE DUE PAID



179

POSTAGE DUE

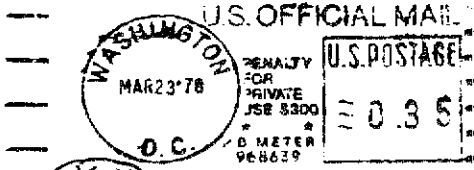


182

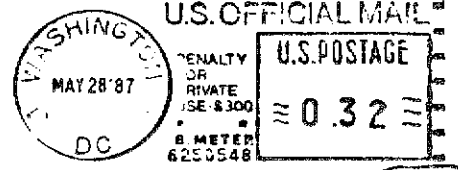
POSTAGE DUE



183



184

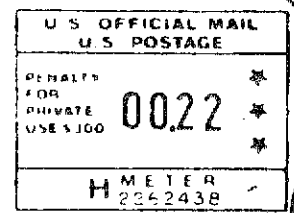
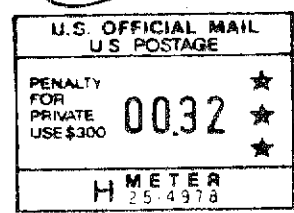


192

THIRD CLASS



198



199

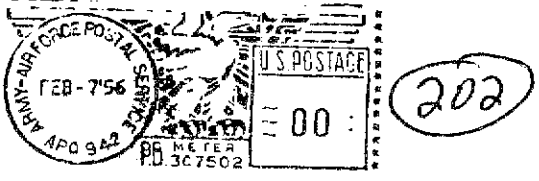
202.	AP(HA)4, ARMY-AIR FORCE POSTAL SERVICE, Alaskan Air Command slogan as noted in catalog addendum, proof tape.	3.00 P
202A.	AP(HA)10, ARMY & AIR FORCE POSTAL SVC/APO 09696, tape.	2.50
202B.	AR(HA)4, ARMY POSTAL SERVICE/APO 09757, tape.	1.50
203.	AR(HC)3B, ARMY POSTAL SERVICE/APO 09696, off-center TM, tape.	1.50
204.	AR(HC)3B, ARMY POSTAL SERVICE/APO 96301, with APO backstamp.	2.50
205.	AR(HC)3B, ARMY POSTAL SERVICE/APO 09154 off-center TM, tape on Express Mail cover.	5.00
206.	AR(HC)3B, ARMY POSTAL SERVICE/APO 96358 on Express Mail cvr.	3.00 P
207.	AR(JA)4, Postalia ARMY POSTAL SERVICE/09403/APO, slogan, on folded favor cover.	5.00 P
207B.	APO(KG)2, APO NY/09034, tape.	1.50

PERMITS (Stambaugh catalog used)

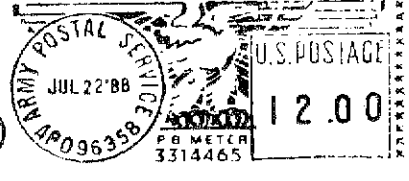
208.	AH1, Hasler permit 816, Jersey City, cover.	2.00 P
209.	BA2, MALDEN/MASS. P.7, manila cut, NOV 29 1922 (VR)	15.00
210.	CA2, BALTIMORE/MD. P.2, APR 3 1922, front. (RRR)	3.00
211.	CA2, COLUMBUS/OHIO P.1, top strip, AUG 15 1922 (R)	5.00 P
212.	CA3, 2c BALTIMORE/MD. P.1, cover with color ad on rev. (R)	7.50
213.	CB2a&b, 2 CENTS and 3 CENT, cuts.	5.00 P
214.	CB2c, 4c, NEW YORK/N.Y. P.96, 2-line date, cut. (VR)	10.00 P
215.	CB3b, six lines, MILLTOWN/N.J. P.1, front.	5.00
216.	EB9h, Unengraved block in place of F/V, front.	2.50
217.	RE1M, FIM B, permit 1, attractive orange printed unmailed cover, Lady Lake, Florida	1.00
218.	Press printed Bulk Rate permit on large manila cover, illegal design mimicking Pitney-Bowes meter.	2.00 P

TOWNS

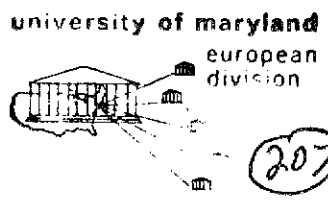
219.	FORT WAINWRIGHT/ALASKA HE1 tape	2.00
220.	KYKOTSMOVI VILLAGE/ARIZ. HD2 proof on card	2.00
221.	VULTEE FIELD/CALIF. GB1 cut with airplane slogan	2.00 P
222.	VETERANS' HOME/CALIF. DF7 strip	2.00
223.	BETHANY BEACH/DEL. HB4 proof pair on cut	1.00
224.	CYPRESS GARDENS/FLA. HA10A on strip	1.00
225.	HURLBURT FIELD/FL O(KE)3 strip	1.50
226.	FRIENDSHIP INTERNATIONAL AIRPORT/MD. HC4A cover	1.50 P
227.	LITTLE SWITZERLAND/N.C. HD2 proof tape on cover	1.00 P
228.	PRESSMAN'S HOME/TENN. HA4A small cut	1.50
229.	DALLAS-FORT WORTH AIRPORT/TX 75261 HA10B proof on cover	1.00 P
230.	FORT HOOD/TEX. HE1a tape	1.00
231.	BAINBRIDGE ISLAND/WASH. HB4 on cut	1.00 P
232.	COULEE DAM/WASH. HA4A cut	1.00
233.	RANDLE/WASH. O(HC)2 proof cut	2.00
234.	CHUGWATER/WYO. HD2 proof tape	1.00
235.	TEN SLEEP/WYO. HB4B proof on card	1.00
236.	Error: KEYWEST/FL (one word error) HF1 strip	1.00 P
237.	Error: WHITE SPRINGES/FLA. HE1 proof on card	2.00
238.	Error: BELTSILLE/MD. HA10B on front	2.00 P
239.	Error: CUTCHOGUE/N.Y. HA10A cut.	5.00 P
240.	Error: ROCKVILLE CENTER/N.Y. Strip. (DE3).	5.00
241.	Error: LAURINGBURG/NC LA1 proof on card	2.00
242.	Error: PAWLEYS ISLND/S.C. HE1a on cover	2.00 P
243.	Errors: WHITE SANDS MISSILE RANGE (tape on large cover), YELLOW SPRING/OHIO (cover) and FAIR FAX/VA (cover)	5.00 P



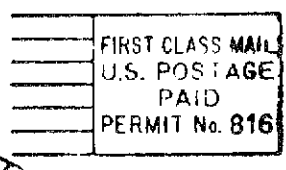
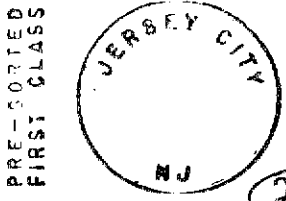
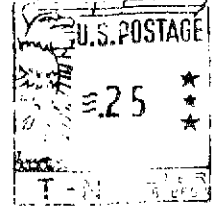
202



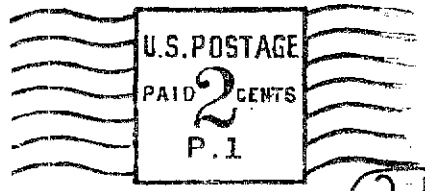
206



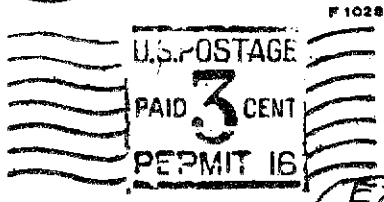
207



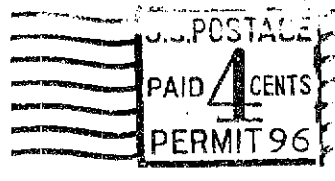
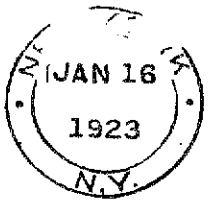
208



211



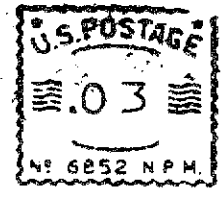
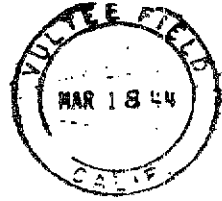
EX 213



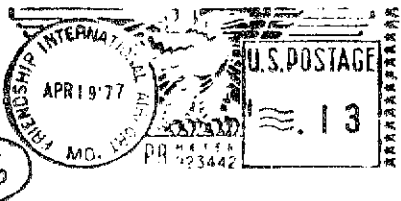
214



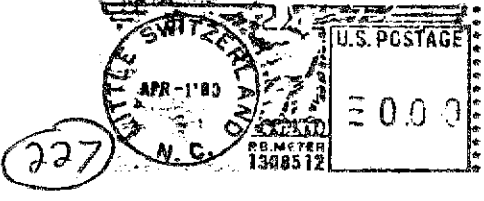
218



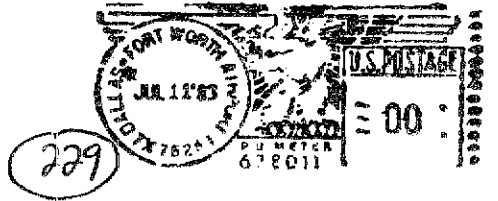
221



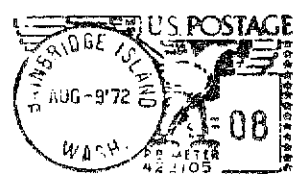
226



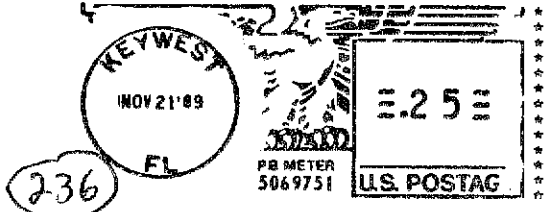
227



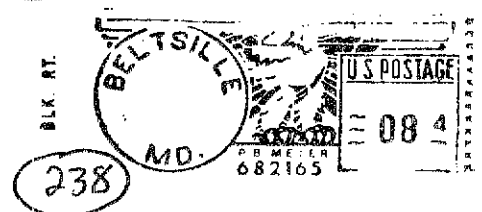
229



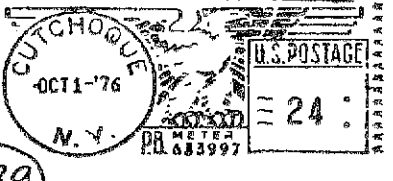
231



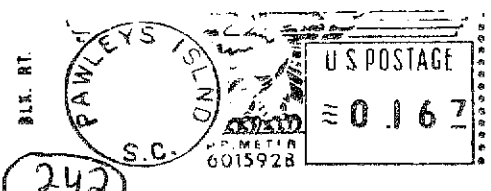
236



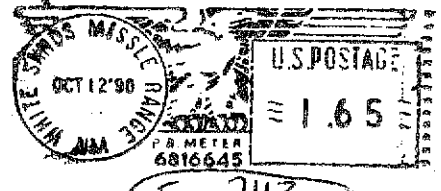
238



239



242



EX 243

SLOGANS

244.	AIRCRAFT: A-10 attack aircraft on tape.	1.50 P
245.	BROOKLYN BRIDGE: 100th Anniversary slogan	1.00
246.	CHRISTMAS: 45 covers with Christmas-related slogans.	2.00
247.	COVERED BRIDGE: 1 cover (HD2), 1 proof tape (HC8B)	2.00 P
248.	EDUCATION: 30 covers with school or education slogans.	1.50
249.	ENTERTAINMENT: 20 covers with movie, TV or radio slogans.	2.50 P
250.	EXPOS: Louisiana World Exposition HC4B mint tape	3.00
251.	INSECTS: 1 Bee (HC8B) and 1 Housefly (FB2)	2.00 P
252.	MASONIC: 2 covers, scarce	4.00
253.	PETROLEUM: 3 GA4 proof tapes with petroleum product slogans	1.00
254.	SPORTS: 17 covers; 10 football, 5 golf, 1 baseball, 1 b'ball	7.00 P
255.	SUBMARINES: 2 covers,, Electric Boat Div, Groton, Conn	4.00
256.	TRANSPORTATION: 50+ covers with transportation slogans.	2.00

PHILATELIC COVERS

257.	Green Postalia JA1 print with show slogan and cachet for Chicago World Flower and Garden Show, 1962.	2.00
258.	Pair of cacheted US and Canadian covers, commemorating first commercial hydrofoil service in North America, 1961.	5.00
259.	Canadian meter cover commemorating Royal Visit, May 17, 1939. Nice slogan.	5.00 P

POSTAL HISTORY

259A.	CA2 cover with Scott OX18 Official Seal on reverse, tied with red CDS.	5.00
260.	Long Island illustrated machine cancel on HE1 cover.	1.00 P
261.	Nixon-Agnew campaign headquarters illustrated HA10B cover.	2.00
262.	Providence automated post office Intelec machine cancel on HC7 cover.	2.00
263.	Stamford spray-on postal marking on HE1 cover.	1.00 P
264.	WWII censored cover from San Juan to Hartford, DE3 meter.	2.00

TERRITORIES & POSSESSIONS

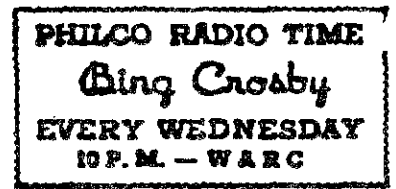
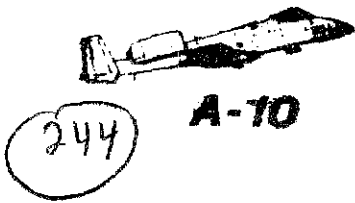
265.	CANAL ZONE: 3 covers, 1 tape, 1 piece	3.00
266.	MARIANA ISLANDS: HC4A mint tape, SAIPAN	2.50 P
267.	PHILIPPINES: FB type from Manila, strip	2.00

UNITED NATIONS & RELATED

268.	French meter with Int'l Civil Aviation Organization slogan.	5.00 P
269.	UN New York first day, MAR 25 '46. Unaddressed cover.	75.00 P
270.	Lake Success with UN emblem. Card.	125.00 P
271.	Lake Success with Appeal for Children slogan. Cut.	50.00
272.	New York with emblem slogan. Unmailed cover.	75.00
273.	Geneva with UN emblem in indicia. Cover.	15.00 P

CANADA (Irwin/Legris catalog numbers used)

273A.	1.2 2c and 3c green, 2 covers, HOUSE OF ASSEMBLY	2.00
274.	4.1C12 Franco meter 1024, nice print on tape.	25.00 P
274A.	8.2R1, RETURN POSTAGE/PREPAID, cut.	1.00
275.	40.1, tall, narrow NCR tapes with CANADA/POSTAGE/PAID at top. 2 faint tapes, M 103 and 109.	5.00
276.	NIXDORF 1-cent proof tape, N3000047.	2.00 P
277.	NIXDORF two SPECIMEN tapes, N3000058 and N3000062	10.00
278.	NIXDORF another pair as above.	10.00
279.	41.5R1, NCR Postage Due tape, Winnipeg.	10.00



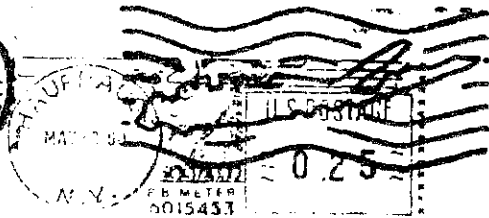
Ex 249



259



260



263

STMFD CT X0651EX PM 06/20/90



266



O.A.C.I. I.C.A.O.

268



UNITED NATIONS • NATIONS UNIES
HUNTER COLLEGE, BRONX 63 NEW YORK



269



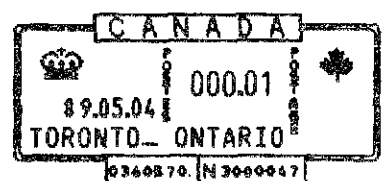
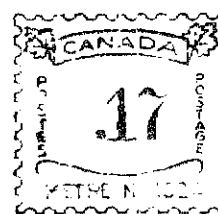
270



273



274



276

FOREIGN

280.	AFARS & ISSAS - rare country, red print on manila strip	5.00
281.	CZECHOSLOVAKIA - 9 covers with 3 different post-communist era slogans, incl visit of Pope John Paul II.	5.00
282.	INDIA - Roneo Neopost demo meter and slogan, cut	2.50 P
283.	IRAQ - registered cover from Baghdad.	2.00 P
284.	ITALY - registered meter print on #10 cover.	2.00 P
285.	IVORY COAST - scarce country, tape.	2.00 P
286.	JAPAN - registered cover for mailing cash, sealed on reverse with special stamp-like seals. (See Linn's, 1/7/91)	2.50
287.	JERSEY - red print with slogan on cover.	2.00 P
288.	KENYA UGANDA & TANGANYIKA - Air Mail cover.	3.00 P
289.	MEXICO - registered cover with attractive seals and postmarks on reverse.	2.50
290.	NETHERLANDS - early meters, #1 (2c cover and 10c front) #2 (15c cover and front).	5.00
291.	NETHERLANDS - 50 Postage Due meters on cover.	5.00
292.	RHODESIA NYASALAND - red print with slogan on cover.	2.50 P
293.	SENEGAL - red print with slogan on cover.	2.00 P
294.	SOUTH ARABIA - (Aden), Universal #U1, red print on blue cover with Canada (destination) overcancel.	5.00
295.	SWAZILAND - Meter #SG010, light print on white cover.	5.00
296.	SWITZERLAND - Swiss official meter on large air mail cover.	2.00 P
297.	VIET NAM - red print with slogan on interesting Saigon cover.	2.50 P

AUTOMATS (FRAMAS)

298.	AUSTRALIA - 1990 8th International Postage Stamp Show	1.50 P
299.	AUSTRIA - 1983 mint button set of 3 (03/04/06 Gr)	3.50 P
300.	BELGIUM - 1985 RELIFIL mint button set of 3	5.50 P
301.	FINLAND - 1989 SANTA CLAUS LAND, 4 values on FDC	5.00
302.	GREAT BRITAIN - set of 32 Automats in original BPB envelope.	25.00
303.	HONG KONG - 1987 Rabbit, 2 sets (01 & 02) of 4 mint values	3.50 P
304.	ISRAEL - 1988 Frama stamps on FDC	4.00
305.	LUXEMBOURG - 1983 mint button set of 3 mint: 2502,2503,2504	2.50 P
306.	SOUTH AFRICA - 1986 #P.001 FDC plus mint and used	4.00 P

(SEE 'LATE ENTRIES' FOR KUWAIT FRAMA AUTOMATS)

METER RELATED LITERATURE

307.	<u>THE POSTMARK EXCHANGITE</u> , ten issues from Vol 1 #3 to Vol 4 #2 (Jul 1935 - JUL 1938). Includes articles on AEFPOs, Naval cancels, Christmas collecting, meter slogans.	10.00
308.	<u>U.S. CANCELLATION CLUB NEWS</u> , 16 issues from Vol 16 #1 to Vol 17 #8 (Spring '82 - Fall '85) plus 188 page index.	10.00
309.	<u>POSTAL HISTORY USA</u> , 31 issues btw Vol I #4 and Vol XII #3, (Dec '72 - Sep '83).	10.00
310.	<u>THE METER POSTAGE STAMP CATALOGUE</u> , Barfoot & Simon, 1956, the reknowned but out-of-print world meter stamp catalog. Authorized photo-copy.	16.50
311.	Collection of MSS bulletins, from 69 thru 177, nearly complete between, housed in two small 3-ring binders.	20.00

COLLATERAL ITEMS

312.	AUTOPOST color brochure from White Flint Mall location.	10.00
313.	POSTAL BUDDY, rare machine 10031, autographed by inventors, postmarked National Postal Forum Station, 9/18/90	25.00

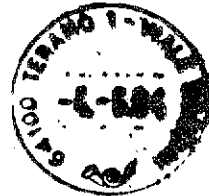
If your MAIL is a mixed bag, instal
RONEO NEOPOST



282



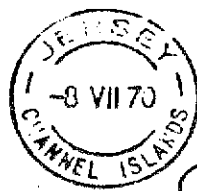
283



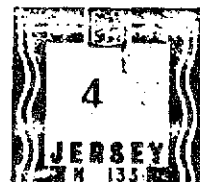
284



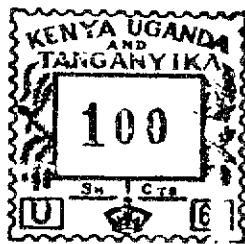
285



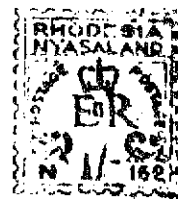
287



288



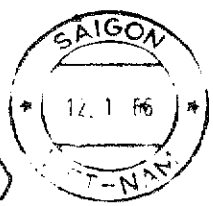
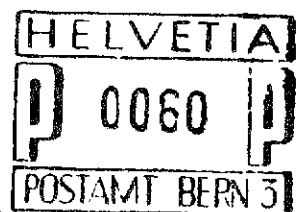
292



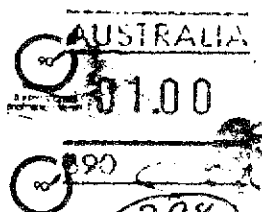
293



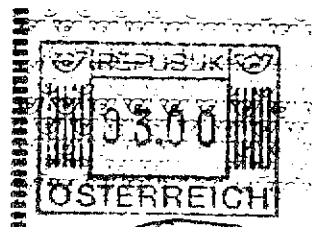
296



297



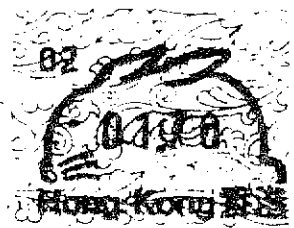
298



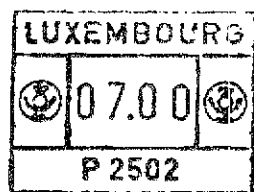
299



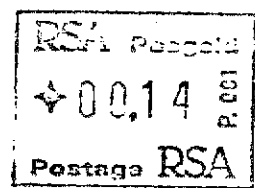
300



303



305



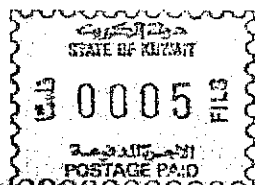
306

COLLECTIONS & ACCUMULATIONS

314.	Canadian Military, CAPO/5052 cover plus 9 RCAF stations on cuts/fronts.	5.00
315.	Set of 5 SPECIMEN covers, as illustr. in MSS Bul. 210	5.00
316.	Collection of 14 metered Special Delivery covers, with various backstamps. 8 meter types noted.	2.50
317.	Collection of 21 foreign WWII censored meter covers, all different countries, some Nazi handstamps noted.	5.00
318.	Collection of 1000 cvrs and fronts, all diff.	15.00
319.	As above, numbers do not duplicate previous lot.	15.00
320.	Collection of 200+ slogan meters, mostly full cover, some duplication, all recent (1988-1990).	25.00
321.	Collection of nearly recent 100 foreign meters, mostly covers, primarily non-European.	20.00
322.	Nine #6 covers of UN meters with slogans, dupl.	5.00
323.	RARITIES: nice starter set of 19 different (R) and (VR) items, from CA1 (12c) to HA9. Cuts to covers.	20.00
324.	PO & PD: approx 250 covers, plus cuts and tapes, wide variety.	15.00
325.	MFZC: Mailed From ZIP Code meters, approx 400 covers, several dif varieties noted, not checked for numbers.	10.00
326.	DB9, 10 & 11: collection of 20+ cvrs, fronts and cuts.	5.00
327.	Towns: collection of 300 proof prints on 3x5 cards, all different tough, hard-to-get towns.	10.00
328.	US Official mail meters with APO nine digit ZIP in TM, four tapes on mailing tags	6.00
329.	OVALS: 45 cvrs representing types CA-CK, duplication.	2.50
330.	D-TYPES: 100+ covers with D-type meters, duplication.	2.50
331.	G-TYPES: 45 covers with NPM/CC meters, some dupl.	2.00
332.	FLYING EAGLES: 5 type FA covers.	1.00
333.	FB-TYPE: 37 covers, many interesting slogans noted.	2.00
334.	BALTIC STATES: Estonia, Latvia and Lithuania, 2 covers, 3 fronts, 10 cuts/strips, some duplication.	20.00
335.	GREAT BRITAIN: nearly twenty pounds, mostly covers, broad range of numbers/types. Also several issues of the British Meter Stamp Study Group bulletins.	25.00
336.	GREAT BRITAIN: shoe box full of British small covers, mostly from 40's and 50's.	5.00

LATE ENTRIES

337.	AUTOPOST, matched set, one THIRD CLASS [PV(C)1D] and one PARCEL POST [PV(C)2A], Washington machine 83, 08/26/89, sequence numbers 1 and 2 of transaction 00004.	75.00
338.	AUTOMAT - KUWAIT FRAMA, <u>first</u> issue, 1984, red-brown, 0005 denomination mint stamp.	190.00 P
339.	Another as above, unused w/o gum, small discoloration in margin.	35.00
340.	Another, but <u>second</u> issue, 1989, pink, 0005 denom, mint.	20.00
341.	Another second issue, 0015 denomination, mint.	20.00
342.	POSTAL HISTORY - prisoner cover, US definitive tied by .00 meter print with slogan THIS LETTER/ ORIGINATED AT/FLORIDA STATE PRISON/ 904-964-8125	2.50



338