

METER STAMP SOCIETY AUCTION NO. 12

CLOSING DATE: *NOVEMBER 20, 1993*

TERMS

- Lots go to the highest bidder at one increment over the second highest bid. Fractional bids will be REDUCED to the nearest increment.
- In case of tie bids, earliest postmark prevails.
- Bids must be postmarked on or before the closing date. No bids will be accepted, regardless of postmark date, if received more than five days after the closing date, so bid early!
- Prices in the right column are *reserves*, i.e. *MINIMUM BID LEVELS*. Bids below the reserves will be declined. If only one bid is received for a lot, it will be sold at the minimum bid level.
- "Buy" bids will be declined.
- A COMMISSION of *TEN percent for MSS members and FIFTEEN percent for non-MSS members* will be added to all successful bids.
- Postage, shipping, and insurance costs, if necessary, will be billed to the buyer.
- An invoice will be sent to each successful bidder, and lots will be forwarded upon receipt of full payment.
- All successful non-U.S. bidders, please pay in U.S. funds. If that is impossible, please include the equivalent of \$15 extra with payment. Even if in U.S. funds, checks drawn on a Canadian bank *without* a U.S. branch must include an extra \$10. Sorry about this. My bank is not very flexible.
- Refunds will be given for lots not accurately described. Please return such lots within ten days of receipt.
- The placing of a bid constitutes acceptance of the foregoing terms.

Bidding increments:

\$1 to \$19.50 : \$0.50
20 to 39.00 : 1.00
40 to 74.00 : 2.00
75 to 195.00 : 5.00
200 to 480 : 10.00
500 and up : 20.00

Abbreviations used:

M or m = meter number
P or p = permit number
L = license number (Canada)
c = cent or cents
cut = 2" x 4" cut square
small cut = smaller than 2" x 4"
strip = 2" wide strip from top of envelope
front = front only of envelope
cover or cvr = entire envelope
#6 cover/front = approx 3-1/2 to 4" by 6 to 7" in size
#10 cover/front = approx 3-1/2 to 5" by 8 to 11" in size
coll = collection
dup = duplicate or duplication
incl = includes or including
w/ = with
diff = different
var = variety

- A "P" next to the Minimum Bid Price means the lot is illustrated.

- Photocopies of lots are available for a SASE..

MAIL BIDS TO:

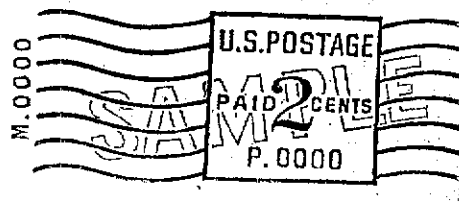
Richard Stambaugh
12 Rutgers Drive
Tinton Falls NJ 07724-9723
USA

A separate bid sheet is enclosed.

UNITED STATES (Simon/Walsh catalog numbers used)

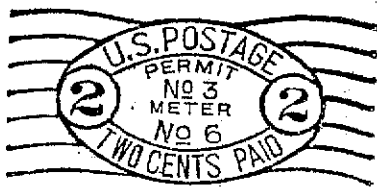
1. AA2, 50th anniversary souvenir cover, 1c red #99275, permit 1165, blank #10 envelope, light impression.....	50.00	P
2. BA1, 1c green, m.1013/p.10, NEW YORK, N.Y./CITY HALL STA., cut.....	6.00	
3. BA1, 2c red, m.0000/p.0000, "SAMPLE" diagonal across indicia SPECIMEN, #6 unaddressed cover.....	50.00	P
4. CA1 - CA6, approx 3400 P-B oval cuts, duplication	25.00	
5. CB1, 2c red, meter N ^o 6 / permit N ^o 3, the first Mailometer machine, used by Mailometer 3/31/23, cut (rare)	25.00	P
6. CB1, same as above but N ^o 0006, same machine with recut die, 3/20/24, cut (very rare).....	30.00	P
7. CB1, 4c brown, m.1360/p.24, SAN FRANCISCO/CALIF., 1926, top strip (R)	6.00	P
8. CB1, 12c red, m.1038, proof example with solid bar in place of permit number, 4/20/23, cut (extremely rare).....	50.00	P
9. CB4, 2c red, m1082, MILWAUKEE/WIS., 9-20-23, top strip with Mail-O-Meter logo, this is a proof and is reportedly (but not proven to be) the only example known	60.00	
10. CC2, extremely rare Mack Postograph stamp, 1½¢ brown m.103 LOS ANGELES/CALIF (RRR). <i>This is the only Mack meter stamp ever to appear in a MSS auction</i>	100.00	P
11. CF1, 2c red, m.C1012/p.951, NEW YORK/N.Y., 2-13-30, #10 cover (VR)	50.00	P
12. CF2, 2c red, m.C1019/p13, SPRINGFIELD/MASS, 8-21-30, #10 cover (VR).....	50.00	P
13. CF2, 2c red, m.C1003 (unlisted number)/p.275, NEW YORK/N.Y., 6-17-30, #6 cover (VR).....	40.00	P
14. Non-Pitney Bowes ovals, 21 covers, International & USPM, all in good shape.....	10.00	
15. Non-Pitney Bowes ovals, 115 cuts, mostly Mailometer and International, duplication	3.50	
16. DB1Aa, 3c and 15c red, m.10704, GREENSBURG, PA./P.2, manila top strip. 15c is new denom. for this var.....	6.50	P
17. DB2, 2c+10c+20c+20c red, m.14944, tape (R).....	3.00	
18. DB6, 1c green, m.9001, no date, cut with portion of slogan, pencil notation "5/-/30"	20.00	P
19. DC9, 9c + 15c on 1940 registered cover without TM (R)	5.00	
20. DD1, 9c purple, m.5145, light impression on top strip (VR)	6.00	
21. DD2, 6c+12c+24c purple, tape (VR).....	6.00	
22. DD2, See NOTE under listing in S/W cat: four philatelic "AMPS" covers, each w/ diff variation in indicia.....	5.00	
23. DE3, .04½ blue, tape (VR).....	5.50	
24. DF2-1, .01 "ONE/CENT/ONLY", m.01231, light print on 3x6 top strip (R)	4.00	
25. DF4, 23c red, m.05215, without townmark, manila top strip (R).....	4.00	
26. DF7 SPECIMEN, set of six #6 covers (.01, 1½, .02, .03, .04, .06) blue, w/ Mich. Stamp Club Silver Jubilee Celebration meter ad, 3/26/39.....	20.00	P
27. EA4, 5, 8, 9, 14: 187 NCR tapes, 61 diff numbers.....	5.00	
28. FA1, 0 27 : red, m.90001, 3-9-34, tape	25.00	P
29. FA2, 0 58 red, m.90011, no date, tape	20.00	
30. FA3, .21 : purple, m.90,012, LONG ISLAND CITY/N.Y., 1-3-35, tape.....	30.00	P
31. FA4, 0 01 ½ red, m.90001, 4-5-35, tape.....	35.00	P
32. FA5, .11 : red, m.90010, 10-11-34, tape	25.00	P
33. FA7c, with "REGISTERED/No." at left, tape on #6 cvr. Tape folded over with postage on back and registered slogan on front with "SEE OTHER SIDE FOR POSTAGE...". The meter, 90197 NEW ORLEANS is VR #	10.00	P
34. FA9b, m.90485 red, with hour slug at left without vertical lines, tape on piece (one corner damaged).....	25.00	P
35. FC1, 0 00: red, m.X1003, 1-16-39, #10 unaddressed proof cover, somewhat ragged (VR).....	35.00	P
36. FC2, 03: red, m.X-1005, 12-29-38, tape with slogan (RRR).....	75.00	P
37. FC3, .03: purple, m.100003, LONG ISLAND CITY/N.Y., 10-13-39, #10 cover	25.00	P
38. FC3, .01: red, m.100003, NEW YORK/N.Y., 12-29-39, #10 cover	25.00	
39. FC3, .06: red, m.100006, NEW YORK/N.Y., 6-16-39, #10 cover	25.00	
40. FC4, .06: red, m.100012, NEW YORK/N.Y., 2-19-40, #10 cover	25.00	
41. FC4, .01: red, m.100013, STAMFORD/CONN., no date, #10 cover.....	40.00	P
42. FC4a, .42: red, m.100012, NEW YORK/N.Y., 10-14-39, hour slug at left, tape.....	15.00	
43. GC5, ≅0.06≅ red, m.CC-51978, ROCHESTER/N.Y., 7-10-52, three short dashes at right, #6 airmail cvr (VR)	50.00	P
44. HA5, ≅08: red, m.341038, 2-23-60, tape (R).....	25.00	P
45. HA11, 0 05: black, m.607691, 12-18-67, light impression on #10 cover (R)	20.00	P
46. HB1, m.109960, 10-9-42 FDC	20.00	
47. HB1, m.109962, 2-29-44, #6 cover (VR).....	20.00	P
48. HB4 SPECIMEN, two impressions (inc. 1-1/2c) on two #10 covers	2.00	
49. HC4A, "AGANA / GUAM" and "PAGO PAGO / SAMOA", territorial usages, tape and cut, 1971 & 1974	2.00	
50. KE3f, assembly error with F/V: 00.00, m.5062295, tape in red, 1983 (R)	5.00	P
51. M(F), 02 red, m.100, 10-14-36, #6 FDC	20.00	
52. M(FC)1, .06 red, m.101, 3-21-38, #6 airmail cover (glue stains from flaps)	15.00	
53. M(FC)2, .03 red, m.51001, NEW YORK/N.Y., #10 FDC	20.00	

1

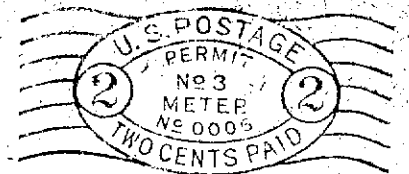
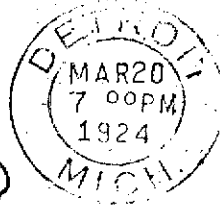


3

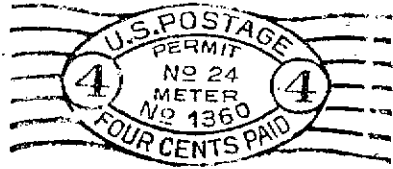
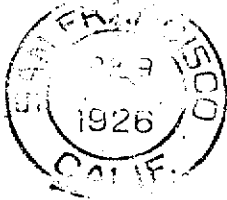
5



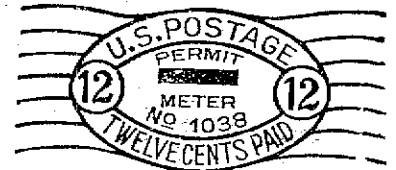
6



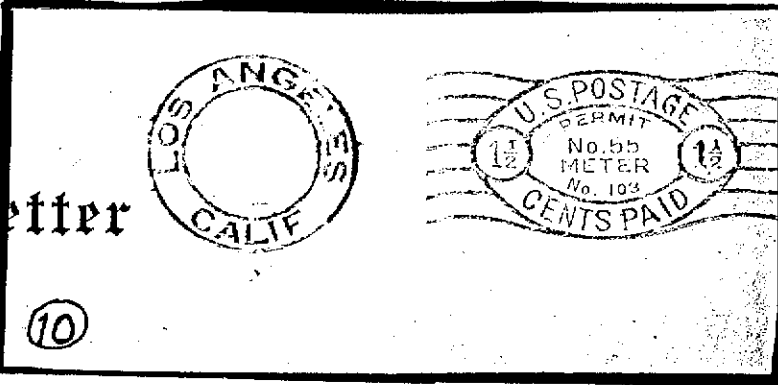
7



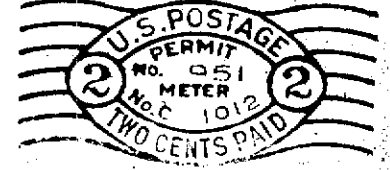
8



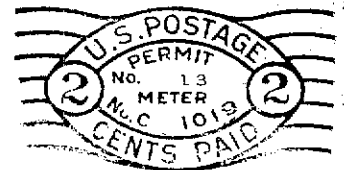
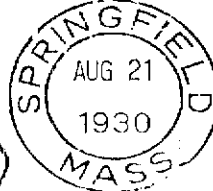
10



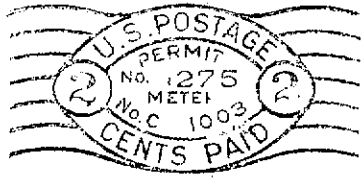
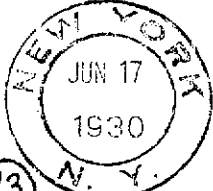
11



12



13



16



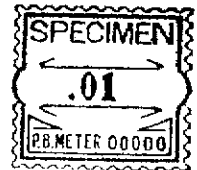
18



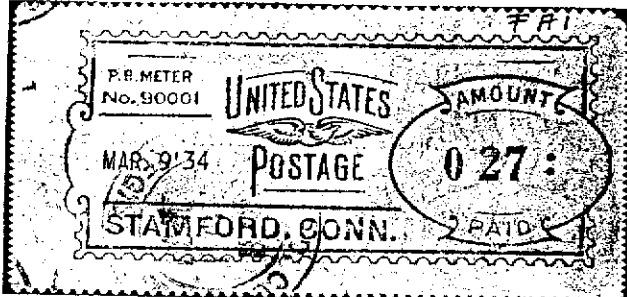
9001



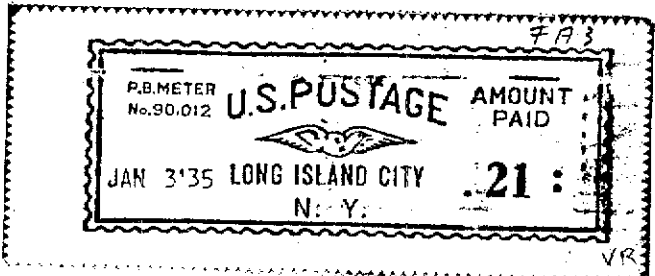
x26



28



30



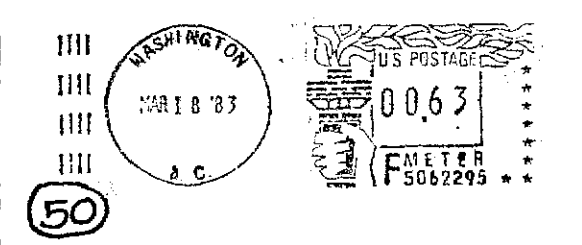
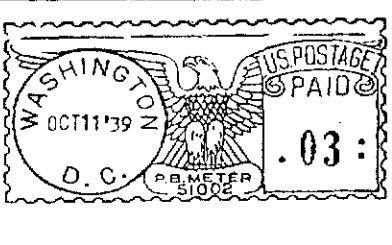
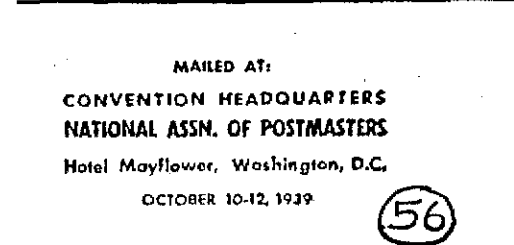
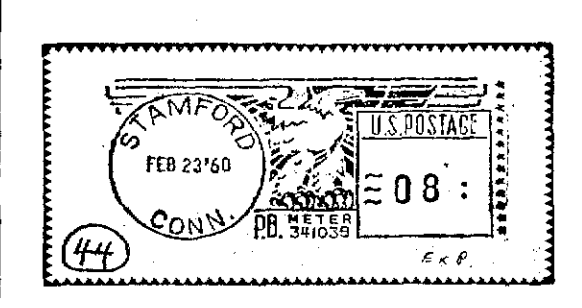
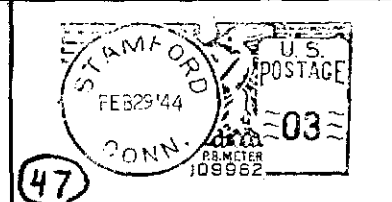
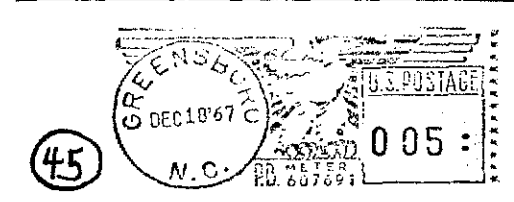
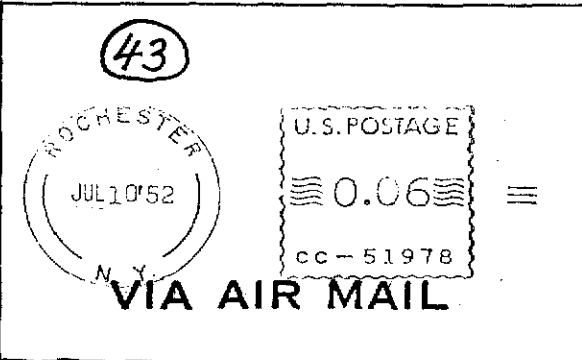
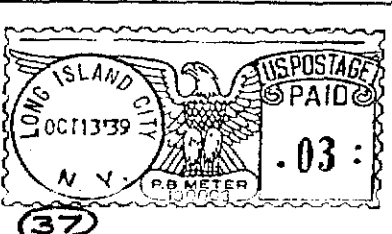
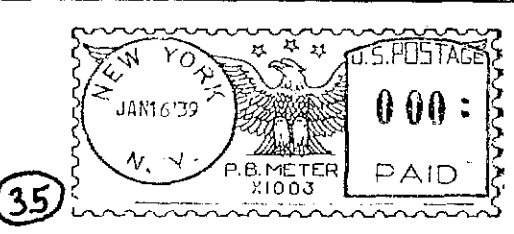
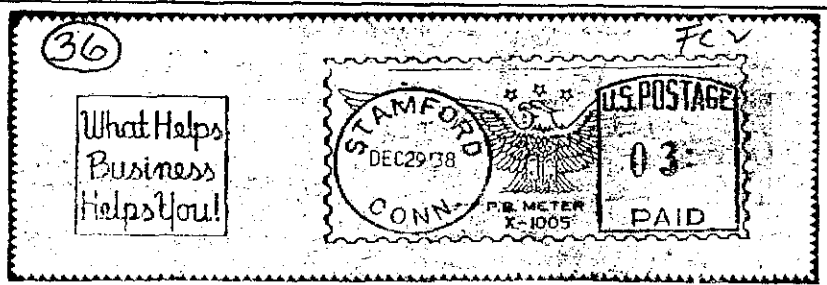
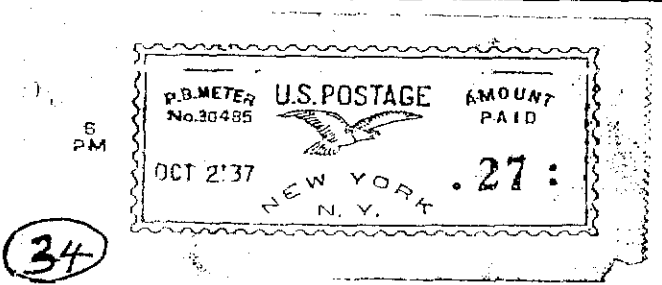
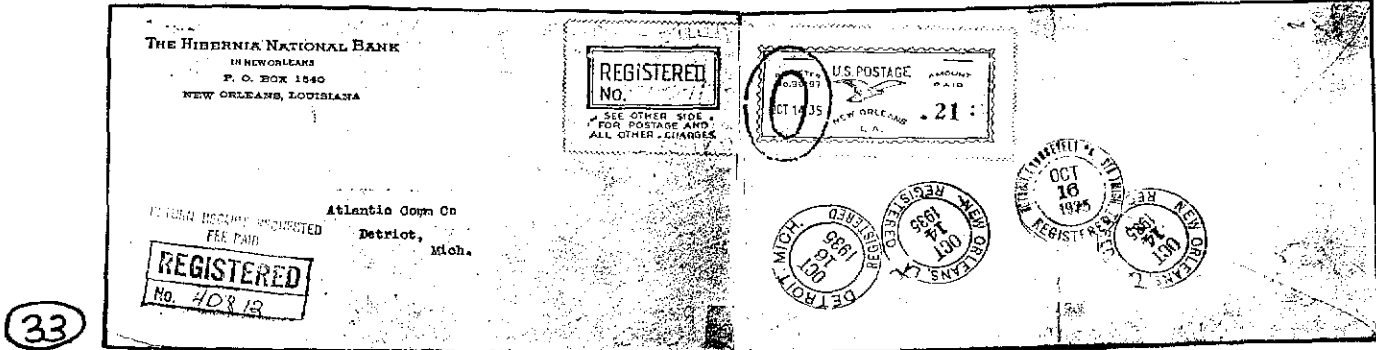
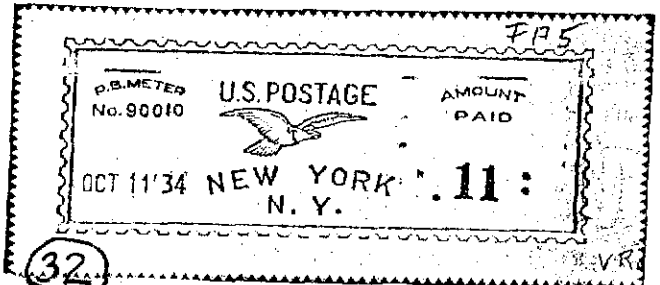
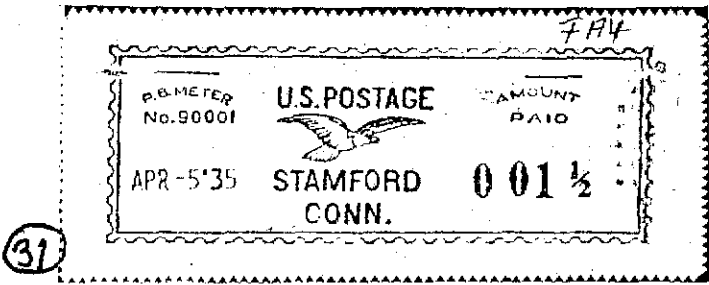
54. M(FC)2a, .03 red, m.51001, NEW YORK/PO/N.Y., 9-25-39, philatelic fabrication on meter tape.....	20.00	
55. M(FC)3, .02: red, m.51003, NEW YORK/N.Y., 11/28/39 with Macy's slogan, souvenir #10 FDC.....	25.00	
56. M(FC)4, .03: red, m.51002, WASHINGTON/D.C., 10-11-39, #10 souvenir cover with NAPC slogan (VR)	25.00	P
57. M(HA)1/1a/2/2a, eight postcards, incl. three to overseas and one in rare purple color.....	10.00	
58. M(HB), .02 red, m.52000, 10-17-42, #6 cover with Uncle Sam slogan.....	15.00	
59. PV(B)1, the "Jacksonville" automat, unused tape with matching receipt	250.00	P
60. PV(C)1A, Washington DC 20043, pair of cacheted unaddressed FDCs (#82 on one, #83 on the other) with red handstamp of MLK Jr. Sta.....	400.00	P
61. P(E)1, 00001 P.O. NEW YORK, APR 18 1937, postally used 17 cent tape	75.00	P
62. P(E)1, 00005, P.O. WASHINGTON DC, MAY 20 1936, postally used 88 cent tape, small 4mm tear in corner	50.00	P
63. P(FB)2, 2d, 2f, six zero-cent favor tapes, four diff numbers.....	3.00	
64. P(GA)4Bc, SAN FRANCISCO, CALIF. / PARCEL POST, P.O.-6153-NPM, NOV 14'39, 1c favor tape.....	3.50	P
65. P(HA)3A, POST OFFICE at bot.of TM, 2 20: denom tape on piece w/ PARCEL POST cancel, OCT 21 '48	1.50	
66. P(HA)4AB, Dec 13 '51, 45 cent tape on small air mail cover to the Netherlands	2.00	
67. P(HA)4Ag, SEATTLE, WASH / CONTRACT STA. 55, 1c favor tape plus three P(HA)4A color oddities	3.00	
68. P(HC)3BB, 5c favor tape with spelling error "CLEVELAND / US PS / HQ".....	3.50	P
69. P(JA)1, #614761 FOREST PARK / US PS / IL, 5c favor tape JUN 3'85 (R).....	10.00	P
70. PC(A)1, NCR 024, 04/16/75 10 cent tape	4.00	P
71. PC(B)1, Set of 5c favor tapes from all five locations: BOSTON 7000008, ST. LOUIS 7000009, CHARLOTTE 7000022, PHILADELPHIA 7000029, SAN JOSE 7000035 (R).....	75.00	P
72. PC(C)1A, "Vienna/Va" 8/29/85 / USPS 123456, 000.05 earliest (prototype) format.....	20.00	P
73. PC(C)1C, "VIENNA/VA" 8/5/86 / I8600157, 44c cover to Germany, great use!	25.00	P
74. PC(C)1D & 1E, 3 diff 5c favor tapes plus PD(PC)C1D & C1E, 3 Postage Due mates to the others, 6 tapes total.....	15.00	P
75. PD(E)HA4A"A" with "POST OFFICE" in TM, WASHINGTON,D.C., FEB 14'62, tape on large front (scarce).....	5.00	P
76. PD(E)HA4A"A", same as previous but JAN 3'62	5.00	
77. PD(E)HA4A, variety "a" without indication of PO use in TM, two tapes in green on #10 cover and front, 1967.....	5.00	
78. PD(E)HA10A, #377882 and PD(E)HC3B, #3368024, all in green, affixed to 18 #10 covers	4.00	
79. Accumulation of PO and PD tapes, most from 1950s thru 80s, many on piece but most loose, wide var. of types, many with "POST OFFICE" spelled out, nice number of PD(D)FB1, approx 650+ altogether	10.00	
80. O(HC)2e, 979412, FAYETTEVILLE/NC with US/PS in townmark, #10 cover.....	8.00	
81. Six pounds + of official metered covers, O(HA) thru O(LA), 1970s thru 1990s, great fun for the specialist.....	25.00	
82. AF(HC)3A, new var "a" with AIR FORCE POSTAL SERVICE APO AE" at top, 5-digit # at bottom, 6x8 cvr	2.50	
83. AR(HA)4A & AR(HC)3B, two Armed Service Machines (Army) zero cent favor tapes.....	2.00	
84. Another pair as previous	2.00	
85. Nine metered #10 covers from 1950s, all certified or registered, wide variety of markings and rates: 18, 28, 34, 43, 46, 52 and 53 cents (You figure them out).....	10.00	
86. MFZC covers, 300+ (incl a few fronts) accumulated over several years, not checked or picked over, dups.....	5.00	

U.S. Meter Stamp EFOs

87. Spelling error, type DE3 w/ TM "ROCKVILLE CENTER / N.Y.", from Rockville CENTRE, #10 cvr.....	2.00	
88. Spelling error, type HE1 w/ TM "WHITE SANDS MISSLE RANGE/NM" (should be MISSILE) #10 cvr.....	2.00	
89. Altered TM, type GC1 w/ TM "(space) CHICAGO/ILL.", #10 front	2.00	P
90. Altered TM, type HA12B w/ TM "(space) RONKONKOMA / N.Y.", #10 cover.....	2.00	P

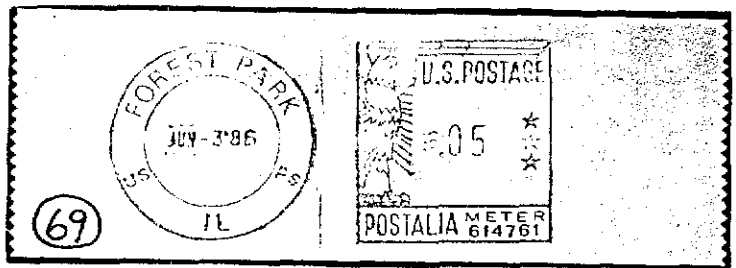
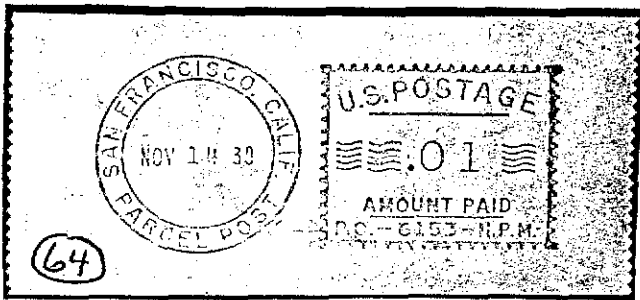
U.S. Permit Stamps (Stambaugh catalog numbers used)

91. Mailometer type CB2, p.2 DETROIT/MICH., very early, JUL 3 1922, on light blue illustrated #6 cvr	25.00	P
92. Mailometer type CB3b, error: 6 lines instead of 7, p.1 MILLTOWN/N.J., #6 cover.....	20.00	P
93. PB type CC3, p.113 NEW YORK/N.Y., nice example of 2c on #6 manila cover (R)	20.00	P
94. PB type CC4, four items all p.96 NEW YORK, 12c quad rate 9x12 cvr (folded), 15c top half of large cvr, 17c w/o TM on #10 reg cvr (torn and taped), 19c w/o TM on #10 reg cvr (good shape) (R, VR)	25.00	
95. International type CD2, p.1 PORTLAND/OREGON, 2c on #6 cover, 1926.....	5.00	
96. Standard type CE4, p.199, 17 cent (VR) w/o TM but with slogan (rare) on 4 x 6 registered cover, 1935	25.00	P
97. Standard type CE4e, 3 cent with "3" inverted, p. 5 COLUMBUS/OHIO, 1945, #10 front with illustration	15.00	P
98. IMM type CJ4a, 9 cent triple rate #10 cover, 1953	5.00	
99. Press printed type PA2, two registered #6 covers, 17c and 18c, both p.1 HANOVER/N.H., 1929 & 1936.....	15.00	
100. Nine cvrs, p.615 Akron Ohio (Ohio Edison), each a diff type or variety or with diff slogans if same type.....	10.00	P
101. Officials, accumulation of Types O-AA thru O-GC, box of approx 800 covers plus strips, tapes and a few cuts, Type O-AA dominates but good variety of other types seen.....	20.00	



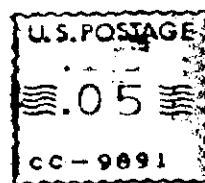
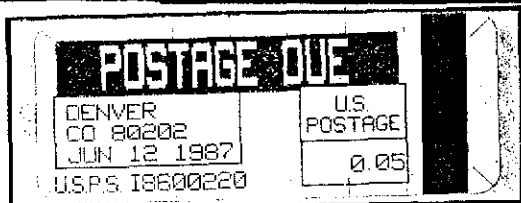
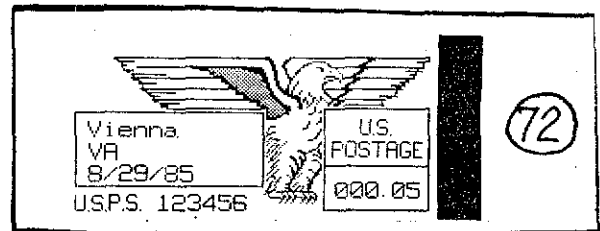
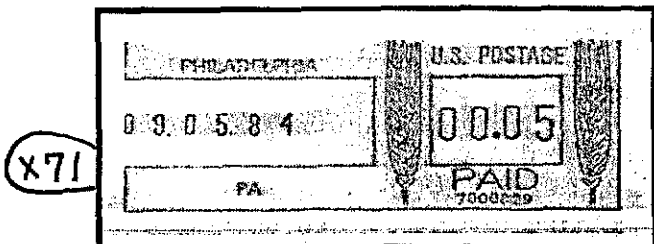
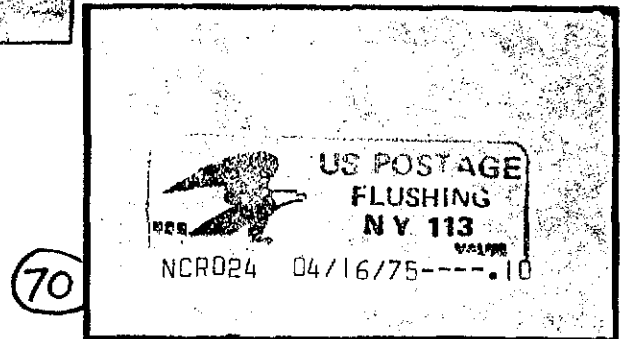
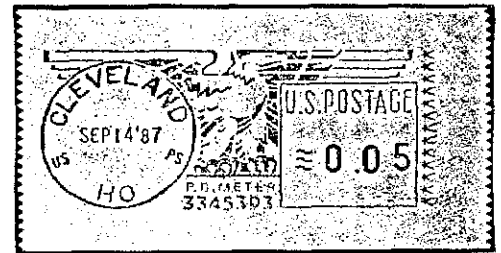
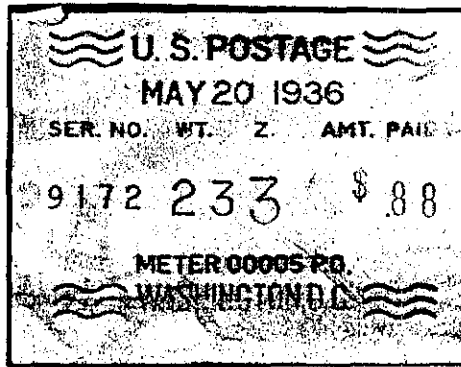
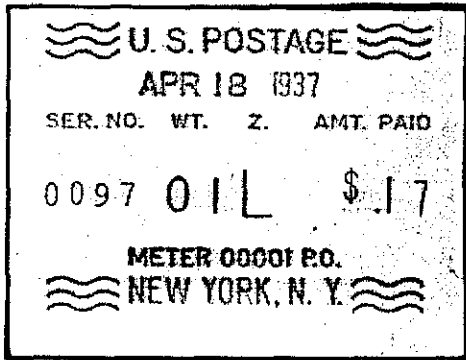
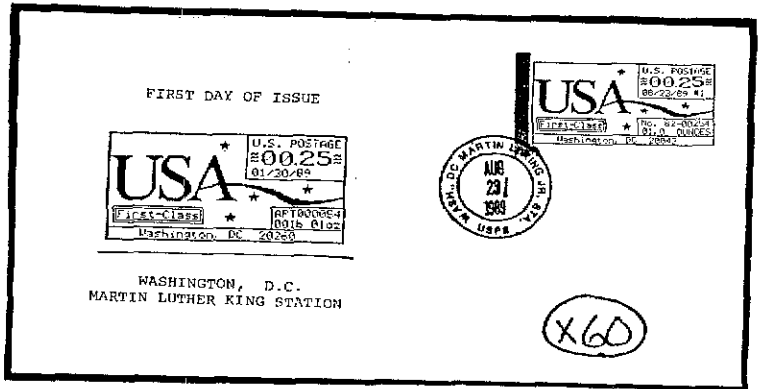
Rest of world (Barfoot/Simon catalog numbers used)

102. ADEN, 3 different types on covers to Holland, 1953-60	3.00	
103. AUSTRALIA, STAMPEX '86, cacheted cvr with special postal charges calculator (PCC) stamp #5034-1986.....	5.00	P
104. AUSTRALIA, combined scale calculator (CSC) stamps, 24 diff from five diff post offices, different papers including some of the rare provisionals, mint NH	25.00	P
105. AUSTRALIA, same as above, but uncut strips of three	75.00	
106. AUSTRIA, Extremely wide Francotyp meter stamp used by Austrian Airlines, only one such machine ever used, #10 cover w/ fold not affecting stamp (R)	8.00	P
107. AUSTRIA, B/S Type PD3 cat. no. PD5 (blue) used on court document by Court of Justice for collecting postal fees from recipient. <i>Extremely rare</i> , especially on full document 15.XII.30.....	40.00	P
108. AUSTRIA, Similar to above but cat. no. PD7 (same machine but red impression) on cover, 26.VII.35.....	40.00	
109. Previous two lots as one	80.00	
110. BAHRAIN, four covers, three different meter types plus one 'postage paid' machine stamp, 1980s.....	2.50	
111. BELGIUM, B/S type 1, #2: 10c & 1f75, five impressions (total 3f80) on 1936 registered cover Bruxelles to Amsterdam and forwarded to Middelburg (Holland), wax seals of F.M. Phillipson & Cie.	25.00	P
112. BELGIUM, Post Office meter P2170 on registered express front to Switzerland, 13 III 65	2.00	
113. CANADA, #6 cover with meter slogan for 1939 Royal Visit to Canada	5.00	P
114. CANADA, P-B commem cover (#951 out of 1000), slogan for Coronation of QE II, 2 VI'53	5.00	P
115. CANADA, P-B commem cover (#51 out of 1000), slogan for UPU Congress, 11 IX'57.....	5.00	P
116. CANADA, P-B commem cover (#121 out of 1000), slogan for Opening of Parliament by QE II, 14 X'57	5.00	P
117. CANADA, P-B commem cover (#62 out of 1000), slogan for Opening of St. Lawrence Seaway by QE II, 26 VI'59 (no back flap)	3.00	P
118. CANADA, 93 covers plus lots of cuts, all franked with Friden and a few Neopost, wide variety of types and numbers with only slight duplication, 1970s & 80s	7.50	
119. CANADA, Two Nixdorf favor tapes, MILTON ONTARIO N3000043 and SPECIMEN N3000066.....	2.00	
120. CYPRESS, Registration Post Office meter tape on postal stationery cover w/ other stamp affixed. Meter stamp shows registration only, not postage which apparently had already been affixed by the mailer	4.00	P
121. CZECHOSLOVAKIA, three covers, 1935 pre-war, 1947 post-war, and 1940 mid-war with "BOHMEN UND MAHREN. "The latter cover is registered airmail to U.S.	5.00	
122. CZECHOSLOVAKIA, Unique Hasler used by Swissair, nice example of modern rarity on #10 front.....	6.00	P
123. CZECHOSLOVAKIA, Hasler PO machine, rare, used in 1947 only. 6.VIII.47 cover front to Switzerland	4.00	P
124. CZECHOSLOVAKIA, Another as previous lot, 28.IV.47, nice impression as previous.....	4.00	
125. CZECHOSLOVAKIA, Krag PO machine, very rare, on 30-5-85 registered cover	4.00	P
126. CZECHOSLOVAKIA, FRAMA PO machine, one machine only used for very short time in 1980, 28.11.80 cover to Switzerland (RRR).....	25.00	P
127. DANZIG, B/S #2, registered front to Switzerland, 8 I 36 (R).....	10.00	P
128. DANZIG, B/S #9, registered front to Switzerland, 6 6 39 (rare).....	20.00	P
129. DANZIG, 13 covers, all different users, 1927-1940, six different meter types B/S #2/3/4/5/6/7 plus 'postage paid' machine stamp, scarce and rare material.....	50.00	
130. DENMARK, PO machine used 1948 occasionally for private correspondence, 27 IV 1948 (very rare!).....	25.00	P
131. ESTONIA, B/S #1 registered cover front to Switzerland, 25 11 29 very early (R).....	15.00	P
132. ESTONIA, 8 cvrs franked w/ new meter types, 1992-93, 4 diff types, all diff users, non-philatelic bank mail.....	10.00	P
133. FRANCE, B/S #98, meter no. J.1098, registration meter tape plus adhesive stamp on piece, 3 XI 38 (R)	4.00	
134. GERMANY, four special Parcel Post meter stamps on documents, all different towns, 1970s	6.00	P
135. HUNGARY, PO machine used for bulk mail 1930-39, cover front, 1933 MAR 27, (rare)	5.00	P
136. INDOCHINA, 1952 #10 blue cover with French Satas meter SC.3010, Saigon (scarce)	5.00	P
137. ISRAEL, Jewish National Fund metered covers, 1951 & 1956 with diff slogans, one registered.....	6.00	
138. ISRAEL, same PO meter, before and after money reform, denom -0140 vs -0,14, two souvenir cvrs & tape.....	2.00	
139. ISRAEL, computerized PO stamps, two registered covers TEL AVIV-YAFO 429034 and 429987.....	4.50	P
140. ISRAEL, 61 covers (& 1 cut), wide variety of types including several seldom seen, a great starter collection.....	35.00	
141. LATVIA, four covers plus one cut, four different B/S #3, 4, 8, 10, 1929-1939 (rare material)	20.00	P
142. PALESTINE, B/S #1, meter "A1", 2 + 2 + 7 + 13 mil impr on 1934 front to Switzerland, nice.....	6.00	P
143. PALESTINE, B/S #2, meter "B21", 15 mil, 1 IV 35, good impr w/ slogan on front to Switzerland	4.00	P
144. PALESTINE, nice accum of early cvrs, mostly to Holland, B/S #2, 3, 5, 6, twelve cvrs & two cuts, 1933-43.....	20.00	
145. POLAND, B/S #1, 2, five covers, four different meter numbers, 1928-1929	6.00	
146. QATAR, three covers, three different meter types, 1972-1983.....	2.00	
147. RUSSIA, 85 cvrs since dissolution of Soviet Union, franked w/ old style (CCCP) meters, good var.....	10.00	
148. RUSSIA, provisional meter used in St. Petersburg only, 3 non-philatelic cvrs franked w/ same meter, 1992	3.00	



59

U.S. POSTAGE	\$ 00 .08
CLASS	100 00
1973 JUN	13 P M
JACKSONVILLE FL	0000 01
<i>Handwritten signature</i>	0000 10



149. SAAR, nine covers 1953-1959, seven different meter types, seldom seen material	20.00	
150. SAUDI ARABIA, ten cvrs from six diff towns incl. uncommon: QATEEF, AL-KHOBAR, SHARURAH.....	4.00	
151. SPAIN, FDC of B/S #P3, aerogram to USA, plus unused aerogram P4, (R).....	5.00	
152. TUNIS, B/S #2, meter no. C.0006, 10 V 39, cover front to Switzerland	3.00	P
153. Four int'l covers, 1960s, from IRAN, BURMA, CENTRAL AFRICAN REP. to Europe, nice postal hist.....	5.00	
154. Approx 400 Registered covers from all over the world addressed to Montreal Canada, most opened 3 sides, lots of rates, labels, handstamps--great for specialist, 1960s	25.00	

Rest of world: Essays, Specimens & Proofs

155. Africa, nine SATAS factory proofs on 3x5 sheets, all diff, 1960-1964 & Universal proof on card, 1954.....	20.00	P
156. Benelux, ten SATAS factory proofs on 3x5 sheets, all different, 1961-1970	20.00	P
157. Canada, seven 1980s P-B SPECS, five #10 cvrs & two peel & stick tape, 5 no TM, 3 CITY/PROVINCE	5.00	
158. Cuba, two revenue stamp P-B "CITY/STATE" SPECS, 1950, cuts w/ folds and adhesive tape damage.....	1.00	
159. Philippines, P-B "TOLL FEE" SPECIMEN, 1951, #6 cover.....	3.00	P
160. Turkey, two different P-B essays, 1953 and 1954, on #6 covers	4.00	
161. Ten #6 cvrs w/ various Pitney Bowes essays and pre-production proofs for South/Central America.....	20.00	P
162. SATAS proofs from seven countries, early 1960s, nine different on 3x5 sheets	18.00	P
163. SATAS oddity, could be anything: demonstration stamp, essay, validation stamp, I don't know, 4x5 sheet.....	4.00	P

Automats

164. AUSTRALIA, 1st issue (barred edge), 7 cach. unnadr. FDCs: 2000/2601/3000/4000/5000/6000/7000.....	20.00	P
165. AUSTRALIA, 2nd issue (kangaroo), 9 FDCs: 2000/2601/3000/4000/5000/5790/6000/7000/no code	15.00	
166. AUSTRALIA, 3rd issue (platypus), 9 FDCs: 2000/2601/3000/4000/5000/5790/6000/7000/no code	8.00	
167. AUSTRALIA, 4th issue (echidna), 9 FDCs: 2000/2601/3000/4000/5000/5790/6000/7000/no code	9.00	
168. AUSTRALIA, 5th issue (possum), 9 FDCs: 2000/2601/3000/4000/5000/6000/7000/0800/A25	8.00	
169. AUSTRALIA, 6th issue (koala), 9 FDCs: 2000/2601/3000/4000/5000/6000/7000/0800/A25	10.00	
170. AUSTRALIA, the previous six lots as one lot, 52 cacheted unaddressed FDCs.....	70.00	
171. AUSTRALIA, STOCKHOLMIA '86, Maxicard with kangaroo 5790 stamp, Stockholm special postmark.....	10.00	
172. AUSTRALIA, CUPPEX, 1/31/87-2/8/87, nine official cacheted unaddressed covers with daily postmarks.....	20.00	P
173. AUSTRALIA, AEROPEX '88, cacheted unaddressed FDC	4.00	
174. AUSTRALIA, ESSEN '90, maxicard with "HEIDELBERG VIC" CDS 28 May 1990	3.00	
175. AUSTRALIA, NORPEX '91, pair of unaddressed cacheted cvrs w/ special postmarks for both days of show.....	5.00	P
176. AUSTRALIA, PEELEX '92, pair of unaddressed cacheted cvrs w/ special postmarks for both days of show.....	4.00	
177. AUSTRALIA, PEELEX '92, pair of unaddressed maxicards with special postmarks for both days of show	6.00	
178. CZECHOSLOVAKIA, registered PO automat document with both receipt and postage halves rejoined. Unused unsevered automat document included (rare!)	20.00	P
179. GERMANY, Klussendorf first ed., 2nd set 1982: 20/70/110/130/190/250/300 pf., 7 mint stamps, cat. val. \$17	9.00	
180. GERMANY, Klussendorf first edition, 10, 20, 40, 60 pf. stamps with coil numbers on back, 4 stamps	4.00	P
181. GERMANY, Klussendorf first edition, 13 high values used: 205 thru 650 pf., cat. val. \$22	12.00	P
182. GERMANY, Klussendorf first edition, 1st set of FDCs, 14 covers, cat. val. \$47.....	25.00	
183. GERMANY, Klussendorf first edition, 2nd set: 20 thru 300 pf. on seven FDCs, cat. val. \$23	12.00	
184. GERMANY, Klussendorf first edition, 2nd set: 20 thru 300 pf. on three registered FDCs, cat. val. \$23	12.00	P
185. GERMANY, Klussendorf first edition, 3rd set: 5 thru 135 pf., on five FDCs, cat. val. \$17.....	9.00	
186. GREAT BRITAIN, 3½, 12½, 16 p official cacheted FDC, 7 May 1984 Edinburgh.....	10.00	
187. GREAT BRITAIN, 1c FRAMA stamp "NATIONAL POSTAL MUSEUM SPECIMEN"	2.50	
188. HONG KONG, Snake (1990) & horse (1991) FRAMAs, sets of 4 (machine 02) on cacheted unaddr. FDCs.....	8.00	
189. ISRAEL, nine FRAMA stamps used on #10 cover with Convention of Israel Philatelists postmark, 12/26/89	2.50	
190. ISRAEL, ten mint Klussendorf "Season's Greetings" stamps, all machine 023, *0.05	3.00	
191. ISRAEL, Klussendorf "Season's Greetings" unaddressed cacheted FDC plus loose mint stamp	2.50	P
192. PORTUGAL, five Crouzet "bicyclist" automat stamps, *10\$00* (3), *11\$00* and *19\$00*	2.50	
193. SWITZERLAND, The first FRAMA automats, A1 thru A4 on 1976 cvr to Australia, cat. val. \$250 (rare!)	100.00	P
194. SWITZERLAND, the 2nd FRAMA issue 1978, used on local post card, plus loose used stamp, cat. val. \$20.....	6.00	

Topical slogans

195. Airlines of the world, 46 items (33 covers/13 fronts/strips/cuts/tapes), 39 diff slogans representing airlines from 21 countries, all commercial mail, mixed condition.....	10.00	P
196. Airplane on 1946 #10 P-B SPECIMEN cover	3.00	P
197. Arkansas Centennial on 1930s era #10 P-B SPECIMEN cover.....	3.50	P
198. Old fashioned Automobile, in green on #10 cover	8.00	P

199. Beehive on 1932 Czechoslovakia cover.....	7.00	P
200. Same beehive as previous but 1933	7.00	
201. A different beehive, from Hungary, 1939, manila cut.....	5.00	P
202. Bicycles, three diff (2 pictorial), 1 #6 and 2 #10 covers	5.00	P
203. Birds, three diff: stork, owl, baby chick, all on cover.....	5.00	P
204. Bunny Rabbit, #10 cover.....	4.00	P
205. Camera, flash with photographer, 1938 #10 P-B SPECIMEN cover.....	10.00	P
206. Can opener, #10 cover	2.50	P
207. Christmas Seals, 18 items (6 cvrs/ front/9 strips/1 cut), 12 diff slogans (8 reproducing seals), 1940-1955	4.50	
208. Cigarette lighter, #10 cover.....	2.50	P
209. Covered Wagon, #10 cover	5.00	P
210. DeSoto Exposition, Tampa Florida, 1939, #10 P-B SPECIMEN cover	7.00	P
211. Drinking & Driving, five diff "Don't" slogans.....	5.00	
212. Fairy tail: the Pied Piper of Hameln, stamp has TM Hameln Germany, #10 cover.....	8.00	P
213. Feet, 3 human feet on #10 cover, overcancelled.....	2.50	P
214. Fireman's hat, on #10 cover from Puerto Rico, 1948	5.00	P
215. Fish silhouette "OCEAN FRESH MAINE SEAFOODS", #10 cover.....	3.00	
216. Food: box of crackers, top strip (attractive bi-color corner card and bi-color airmail border).....	3.50	P
217. Benjamin Franklin, #10 cover.....	5.00	P
218. Gas for household energy, 1938 #6 NPM SPECIMEN cover	3.00	P
219. Oil companies, 59 items (26 covers/2 fronts/31 strips), 37 diff slogans representing 20 companies, 1938-1965	15.00	P
220. Health: "IMMUNIZE VACCINATE" with heads of three children, #10 cover	3.00	P
221. Household item: box of Kleenex, Australia, #10 cover	2.00	P
222. Household item: toaster, top strip.....	2.00	P
223. Igloo, top strip, 1942.....	2.50	P
224. Insurance Companies, 22 different slogans on 48 top strips & 3 tapes, 1937-1960 (all US)	4.00	
225. "Jack Frost" #10 P-B SPECIMEN cover.....	3.50	P
226. Lincoln, portrait on blue #6 cover	10.00	P
227. Lizard, yellow #10 cover.....	3.00	P
228. Magic Marker, #10 cover.....	2.50	P
229. "MAILED AT JONES DRUG" with illus. of drugstore, #6 cover	2.50	P
230. Masons, two diff Masonic slogans, one pictorial, on #6 covers	3.00	P
231. Movie "Down to Earth" with Rita Hayworth, 1947, #10 cover.....	5.00	P
232. Movie "The Great Ziegfield", 1936 P-B #10 SPECIMEN cover.....	7.00	P
233. Movie "Kiss of Fire", with Jack Palance, 1959, #10 cover	5.00	P
234. Movie "ROCKY III", #6 cover	5.00	P
235. Movie "WIZARD OF OZ"!, #10 cover	15.00	P
236. Pirate, #10 cover	3.00	P
237. Prison slogan "THIS MAIL ORIGINATED AT BAKER CORRECTIONAL INSTITUTION, #10 cover	5.00	
238. Radio & TV, nine different on cover, 1938-1961.....	12.00	P
239. Robin Hood with bow and arrow, #10 cover.....	10.00	P
240. Sail boat and palm trees, #10 cover	3.00	P
241. Ship, #10 cover (Germany)	3.00	P
242. Space Shuttle, #10 cover.....	10.00	P
243. Nuclear Submarine, #10 cover	3.00	P
244. Sports: 1968 Purdue football schedule with illus. of mascot, manila #6 cover.....	2.50	
245. Sports: "SOX ON SIX" with Boston White Sox logo on #6 cover.....	3.00	P
246. Sports: Skier "WINTER SPORTS", #10 cover	8.00	P
247. Sports: 1988 Olympics, two #10 covers with diff slogans, "JEEP" and generic Blue Cross "Sponsor".....	5.00	P
248. Sports: 1988 Olympics, Canada P-B SPECIMEN meter, #10 cover	3.00	P
249. Stamp Convention, 1940 SPA Convention, 2 diff slogans on unaddressed #6 covers	2.50	
250. Stamp Show INTERPEX 1961, cacheted unaddressed #6 cover	2.50	
251. Telephone, 1938 P-B #10 SPECIMEN cover.....	4.50	P
252. Tool in hand, 1938 P-B #10 SPECIMEN cover.....	4.00	P
253. Trains: coal car, #10 cover, 1940	6.00	P
254. Trains: two engines, #10 cover, 1948.....	5.00	P
255. Truck, on fancy #10 window envelope with window as body of truck	7.50	P
256. Wheel chair, #10 cover	3.00	P

AUSTRALIA
\$0.45
 POSTAGE PAID
 6005 30 1368 000115 []
 09JAN92 14:18 0.000k9

110K

WIEN 15.XII.30

114.11

ÖSTERREICH
 S * 0035 G
 einzuheben

107

INTERNATIONAL BUSINESS MACHINES CO. LIMITED

GRAND ER

CANADA METER 2 CENTS 2

113

swissair

OTEVŘENÁ LISTOVNÍ ZÁSILKA

SWISSAIR
 Pařížské 11
 110 00 Praha 1

ČESKOSLOVENSKO *0100 CSSR

122

114

Coronation of Her Majesty
 Queen Elizabeth II

ONTARIO 2 VI 53

115

UNIVERSAL POSTAL UNION
 CANADA 1957

ONTARIO 11 IX 57

116

The Opening of Parliament by
 Her Majesty
 Queen Elizabeth II

ONTARIO 14 X 57

117

Mr. Frederick Reed,
 c/o Remington Rand Inc.,
 Management Controls Division,
 408-410 N. Eugene Street,
 GREENSBORO, N.C.
 U.S.A.

Mr. Frederick Reed,
 c/o Remington Rand Inc.,
 Management Controls Division,
 408-410 N. Eugene Street,
 GREENSBORO, N.C.
 U.S.A.

This is number 62
 of a limited edition of
 1,000 envelopes prepared
 especially for the occasion.

PITNEY-BOWES OF CANADA, LTD.

123

PRAGA 7 6.VII.47

ČESKOSLOVENSKO 0550

Titl.
 M.A. Bogner
 Zürich
 Dreikönigstrasse 45

127

DANZIG -8 1 36 8654

Einschreiben!

Dresdner Bank in Danzig

Schweizerische Rückversicherungs-
 Gesellschaft,

Danzig I

125

Brnková Štěpánka
 Merhautova 138
 Brno
 613 00
 Doporučeně!

BRNO 13 934

ČESKOSLOVENSKO 0400

Úřad

děchodového zabezpečení
 444-150

126

IMPRIMÉ 50%

POŠTA 2 8 1 1 8 0 12 3 5 0080KES

150 60 PRAHA 5

Herrn
 Heiner Düst
 alte Landstrasse 60
 CH-8803 Rüschlikon
 Schweiz-Schweiz

120

01.6.84 6709

0000 CENTS

TO

Mrs. C. MENELOU
 93 PELMBERTON ROAD
 LONDON W4 4AY
 ENGLAND

By air mail
 Par avion

NORDPANK
 TURUPLATS 2
 EE 2100 RAKVERE

RAKVERE

17.6.15

X132

EESTI

060K

POST 280004

10.10.78

X134

DEUTSCHE BUNDESPOST

6.90

0690

mb=MÜNCHEN 3

- 257. 1939 World's Fair, 25 covers, 16 diff slogans (a couple 1964 World Fair covers included as bonus)..... 12.00 P
- 258. World War II, nine covers with eight diff slogans, all nice clear prints..... 7.50 P
- 259. Mix of 33 pictorial and unusual word only slogans (30 different), some SPECIMENs included, all covers 8.00 P
- 260. 150 misc US slogans on cover, lots of school slogans 5.00
- 261. 300 top strips w/ slogans, many pictorial, wide var of topics, emphasis on industrial equip., duplication..... 7.50 P

Modern Postal History, etc.

- 262. Two #6 type CA (oval) metered cvrs: last day of 2c rate (7/5/32) and first day of 3c rate (7/6/32)..... 20.00
- 263. Twelve Registered covers, 1931-1940, with various rates: 17c, 20c, 21c, 24c, 27c, 41c. All franked with meter stamp types DB1, DE1/2/3, FB2 18.00
- 264. Four #10 Registered covers, 1947-1963, with 27c, 31c, 32c & 80c rates, meter stamp types DE1 and HA4 6.00
- 265. Five Special Delivery covers, 1940-1970, with four diff rates: 13c, 35c, 46c, 51c, meter types FB2 and HB4..... 8.00
- 266. Special Delivery, AUG 19 1985, #10 cover with \$3.17 rate, meter type P(HA)4A 5.00
- 267. Five Certified Mail cvrs, 1968-1976, each different rate: 46c, 53c, 55c, 71c, 98c, meter types HB4 and HC4..... 5.00
- 268. Mixed franking: regular & meter stamps on five cvrs, 1939-1942, *Presidentials*, Scott 804, 805, 839, 841 7.50 P
- 269. Meter type DE3 with adhesive Special Delivery stamp (Scott E20) affixed, 1954, #6 cover 2.50
- 270. Meter type HB4 with adhesive Special Delivery stamp (Scott E22) affixed, 1970, #10 cover 4.00
- 271. Metered covers with Postage Due adhesive stamps, four covers, 1939-1967, Scott D3 (1c) and D5 (5c, 6c)..... 2.00
- 272. Scarce 10c international printed matter rate on metered cover NY to Poland..... 2.00
- 273. Two #10 covers with meter slogan "US INTERNATIONAL AIR MAIL POSTAGE PAID PAR AVION" 4.00
- 274. 1959 metered cover with full back illustration showing skyline of Pittsburgh PA in full color 7.50 P
- 275. Five #10 covers with full back ads, 1959-1961, monochrome or bi-color..... 12.00 P
- 276. Two #10 covers with printed permits (one fancy) with illustrated ads..... 3.00 P
- 277. Double business reply card with rare 3½ cent rate meter (HA4) franking on the message card, 5.00
- 278. *Spray-on*: "A TRIBUTE TO OTIS REDDING JUNE 16. MCN,GA 312 06/14/93 18:03", #10 metered cover 2.50

Meter Literature

- 279. *Postage Meter Catalogue*, Steiger, 1931, & 1932 addenda. Lists all ovals known at the time, 178 pp 5.00
- 280. *The Story of Pitney Bowes*, Cahn, 1961, hardback..... 10.00
- 281. *The Meter Postage Stamp Catalogue*, Barfoot & Simon, 1953. Still the best world catalog available..... 17.50



X141

AR gaisa pastu
Par Avion.

„LATVIJAS KOKS” Ltd.
Kokus Tals 1
Rīga - Latvia
P. O. B. 796
C3 E pc

1932
AS „LATVIJAS KOKS”
RĪGĀ

Latvian Post
050
SANT.

14 IX 38 A
LATVIJA

Confidentiel.

Monsieur le Consul Frédéric van Mons Jou
Consulat de Lettonie,
Hobbenstraat 16,
Amsterdam Z
Pays - Bas

5570

TOUTES OPERATIONS DE
BANQUE-BOURSE-CHANGE

TUNISIE
*225
POSTES
C. 0006

152

1216 + 13 V 38.1172

CREDIT SUISSE

ZURICH

SATAS
MACHINES
A
AFFRANCHIR

C.T.T.
19 11 63
LOUENCO MARQUES

X155

CORREIOS DE MOÇAMBIQUE
* 0.00
SCTT



ANDERLECHT
23 7 62

X156

-BELGIQUE-
-BELGIE-
00.00

X159

SEC. 562 P.L. & R.

REPUBLIC OF THE PHILIPPINES
BALETE BRIDGE
16 VI '51
MINDORO
P.B. P.S. 01

TOLL FEE
5 99 ₱



X161

REMEMBER
PEARL
HARBOR

SEC. 562 P.L. & R.

27 V '46

BRASIL
CORREIO
Cr\$ 99 96
5009

X162

DANESHGAH P.T.T.

IRAN
RIALS *00.00
POSTES

X163

DATE
- 8 XII 71

HEURE
00 00

9 9 9 8 3 7

MG
17-014
BOCALLE Locale des Indes
33-LANCON

HAC



Introduction
of Vending
Machine
Postage
Labels

2000
00.30
Australia
22 FEB 1984
NEWCASTLE N.S.W.

X164

X172

X175



0.05
Australia
CHILDRENS DAY
Monday 2 Feb. 1987
Claremont WA 6010



Wetlands
Centre

Smilgau Road, Sharnford NSW Australia
P.O. Box 730 Wollongong, 2520
© 1989 51 4444 Fax: (0439) 50 185

NORPEX '91
00.50
Australia
NEWCASTLE N.S.W. 1500
NORPEX '91
8 October 1991

NSW Northern Region Philatelic Exhibition (NORPEX 91) 8-6 October 1991

X178

PODACI LISTOK
Frvopta - pro odosielateľa.

Odosielateľ:
part for sender

Adresát:

Podacní známky - poplatok:
ŽILINA 7
R 10133 25-8 81
4 Kčs

Pro služobných zariadení: PODACI LISTOK

part for post office

Podacne známky - poplatok:
ŽILINA 7
25-8 81 10133 R
4 Kčs

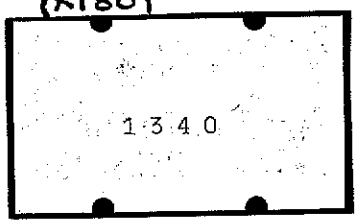
Podacni listok len pro nautomat na prijim
dep. rozdelok.

Smr vložená podacieho listka do otvoru
automatu!

X191



X180



X181



X203



SPEED YOUR LETTERS



ARKANSAS CENTENNIAL

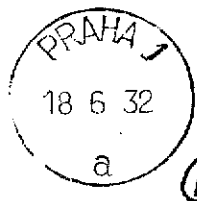
1836 June 15 - December 5 1936
our state is our exposition

IMPROVING DRIVERS



SINCE 1916

198



6897



199

See America
fast
by bike



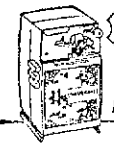
X202

204

HIGH EARNINGS
SAFETY
AVAILABILITY
COAST FEDERAL SAVINGS

205

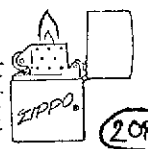
The World in
Pictures



UNIVERSAL
Can Opener
never stalls on corners!

206

FOR THE
LIGHT OF
YOUR LIFE



208

209



210



213



214

ACID-FREE



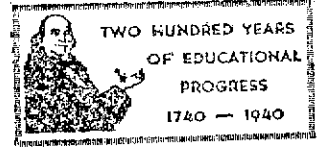
MAKES CARS
RUN BETTER,
LAST LONGER

X219

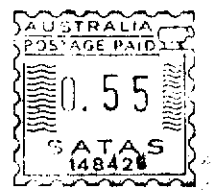
216



217



221



PROTECT YOUR CHILDREN



220

222

The TOASTMASTER
TOASTER
"FIRST ALL WAYS
... ALWAYS FIRST"



223

EBLO STORAGE
Black's Fur Dept.
CLEANING EXPERT
RETYLING SERVICE
LOW RATES

225



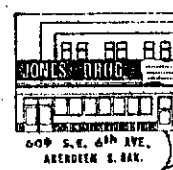
226



227



228



MAILED AT
Jones
6th AVE.
DRUG

229

X230



Recorder:
Edwin O. Wilbur
289 Broadway
Pawtucket
R.I.

231

COMING!
Rita Hayworth + Larry Parks
Down to Earth
in TECHNICOLOR!

232

Watch for M.G.M.'S
THE GREAT
ZIEGFELD
Sensation of the Century

233

Full Length 16mm Sound... in Color
THRILLING DRAMA! INTRIGUE!
JACK PALANCE
BARBARA RUSH
KISS OF FIRE
RENT IN ADVANCE

234

ROCKY III

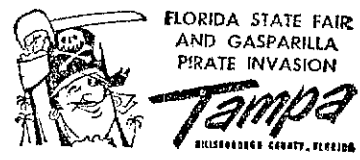
239



240



236



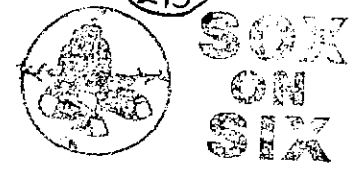
X238



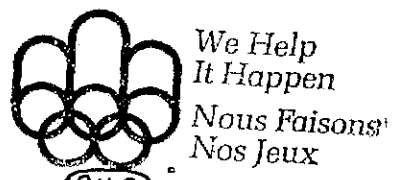
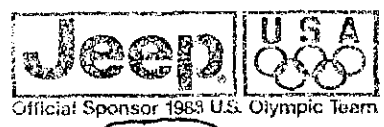
242



245

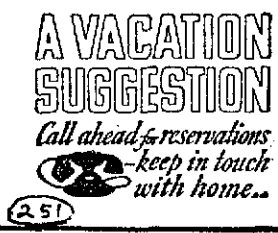


243



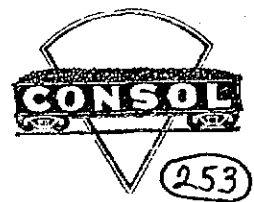
246

X247

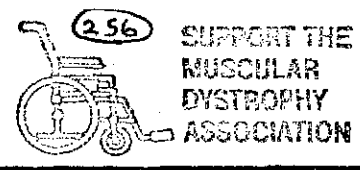


251

252

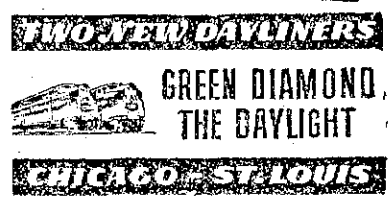


253

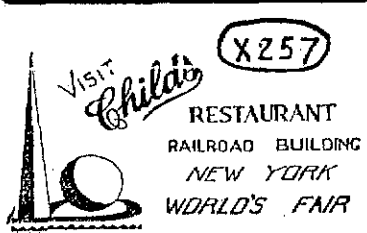
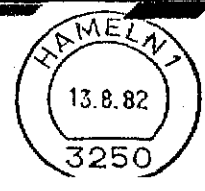


256

254



212



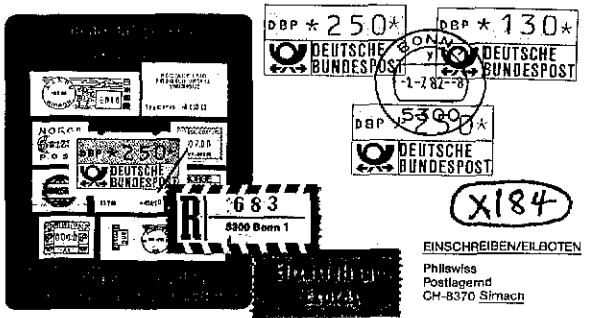
X257



X258



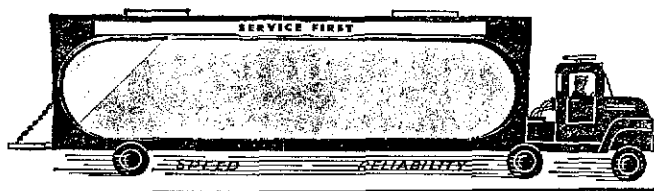
241



X184

EINSCHREIBEN/EILBOTTEN Philwras Postlagemnd CH-8370 Sirmach

CLARK'S EXPRESS COMPANY Spencer, Mass.



255

Telephone
HOLIDAY
GREETINGS

(235)
COMING! M-G-M's
SHOW OF SHOWS!
**"WIZARD
OF OZ"**

(218)
LET
Gas
DO THE
FOUR
BIG JOBS
COOKING
WATER HEATING
REFRIGERATION
HOUSE HEATING

ST. LOUIS
DEC -7 38
MO.

SPECIMEN
.00
AMOUNT PAID
N.P.M. - N00000



BECOME A N.Y. CITY
PATROLMAN
A CAREER WITH A FUTURE

(X259)
METERED MAIL
Saves Time -
Gets
Attention!



National Audubon Society
1006 FIFTH AVENUE
NEW YORK, N. Y.

(X268)

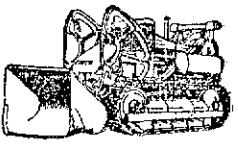
Narrowsburg, N. Y.
Narrowsburg, N. Y.

Bartha S. Wisler
Box 134
Narrowsburg, N. Y.
14 Cornelia St.
Brooklyn, N.Y.

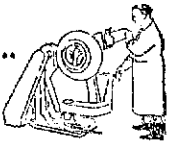
MERRY CHRISTMAS

FIGHT TB
USE CHRISTMAS SEALS

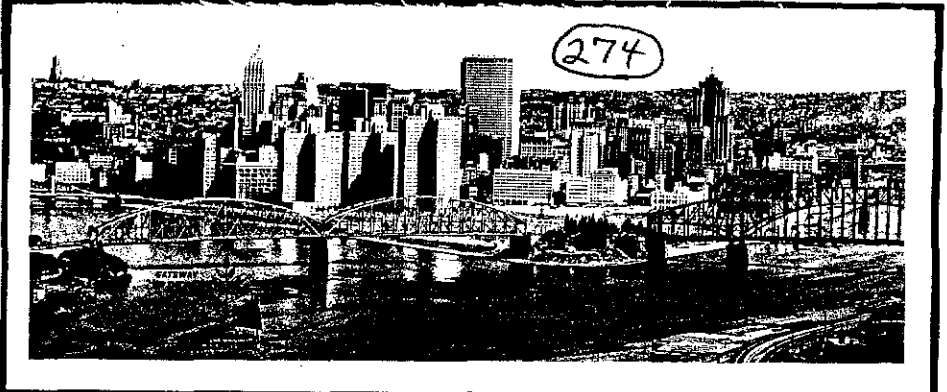
105



BUFFING'S
A LARK...
with
TRU-ARC



(X261)



WHY PAY RENT?

Enjoy Home Ownership

WITH A
BANK MORTGAGE LOAN

INQUIRE ABOUT OUR LOW COST CONVENIENT TERMS

(X275)

PAR AVION
BY AIR MAIL - LUFTPOST

HELVETIA
P0040
A2

HELVETIA
P0040
A2

HELVETIA
P0040
A2

HELVETIA
P0040
A2

HELVETIA
P0040
A2

HELVETIA
P0040
A2

(193)

Mrs. Else ABT,
P.O.Box 18,
Calcaunara Qld. 4551
Australia

HARRY E. BREWIN & Sons Inc. Since 1905
PLEASANTVILLE NEW JERSEY HOSIERY DYERS

PLEASANTVILLE N. J.

U.S. POSTAGE
PERMIT NO. 1

(X276)

P. S. Bowling & Co.
LaPlata
Maryland