

HISTORY AND LISTING  
OF  
TYPE FW METERS  
NEW DESIGNATION DC

COMPILED BY

E. S. LAPHAM MSS 14  
BOX 185  
WADING RIVER, N.Y.

COPYRIGHTED 1951

PUBLISHED BY

THE METER STAMP SOCIETY 1951

TYPE FW METERS

These meters were manufactured by the National Postal Meter Company of Los Angeles and San Francisco, California, which was the successor to the Whitlock Metered Mail Company of Los Angeles. This is the reason why the letter "W" has been used in the type designation. The office of the company was moved to Rochester, New York, in 1940, and it later became a part of the Commercial Controls Corporation of that city.

There are four main types of indicia, as follows: (see cuts)

FWIa - "METER NO.--"	(5 wavy lines in center)
FWIb - "N.P. METER--"	(5 wavy lines in center)
FW2 - "--N.P.M.---"	(4 wavy lines in center)
FW3 - "--N.P.M.---"	(5 wavy lines in center)

On the check list which follows, all numbers through 901 (and 7700) are Type FWIa, unless preceded by "NP" (type FWIb) or by "NPM" (type FW2). All numbers between 901 and 5000 are Type FW2, unless preceded by "M" (type FWIa) or by "NP" (type FWIb). All numbers from 5000 up (except 7700) are type FW3. Meters 870 and 880-901 have larger meter numbers than the usual type FWIa meters, and are sometimes designated as Type FWIc.

The known meter numbers are 42, 101, 225, 452 to 1176, 1500 to 1543, 5000 to 5499, 5600 to 5738 and 5740 to 5753. Machines from 1544 to 1576 and 5754 to 5774 have been manufactured, but have either not been issued or have not been reported in use.

Numbers below 5000 (and 7700) are single denomination machines. They were first put in use about May 1933. The 1500 series was started in 1944 and machines were made as late as January 1949. These single denomination machines are designed by the maker as Model "M" or "P".

Numbers from 5000 up (except 7700) are mostly four-denomination machines (maker's Model B), but a few of them (numbers unknown) are two-denomination combined meters and mailing machines (maker's Model A). These machines were introduced about March 1935. The machines from 5740 up (which have numbers of a different shape) were made in May 1944.

Colors used in this type are designated as follows on the check list:

B. - Blue	O. - Orange
G. - Green	P. - Purple
N. - Brown	R. - Red

All meters have full double circle townmark, unless town name is followed by "(B)", in which case the inner circle is broken, or by "(N)", in which case there is no inner circle. (See 5449)

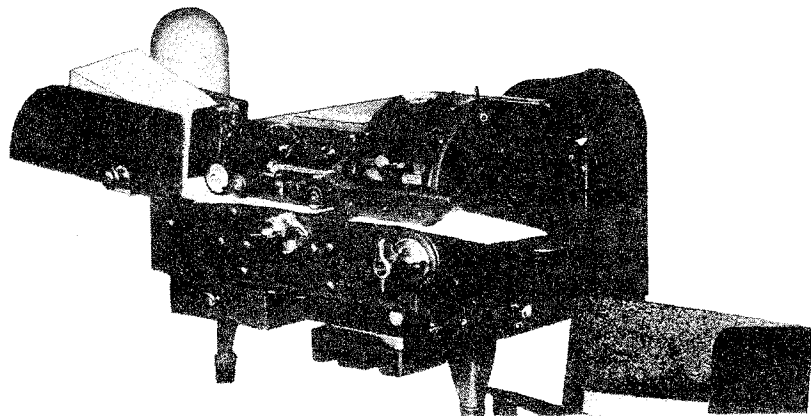
Position of "SEC. 562 P.L. & R." (Listed after denomination)

- A - Above indicia
- D - In townmark, in 3 lines
- DI - Same inverted
- DD - In townmark, in two lines, between lines
- E - Between Townmark circles
- AD - Types A and D both on the same copy

On this check list, all towns names are written out exactly as they appear in townmarks, except that Los Angeles, California, is abbreviated "L.A.", San Francisco, California, is abbreviated "S.F." and New York, N.Y. is abbreviated "N.Y." Under each number, items are listed in order of use as far as possible. To save space, all colors are listed together where possible.

Thanks are due to the Commercial Controls Corporation, and to the many leading collectors who submitted lists and information, without whose support the preparation of this check list would have been impossible.

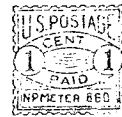
Please report additions to E. S. Lapham, Box 185, Wading River, New York.



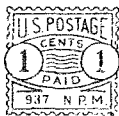
Type 1a



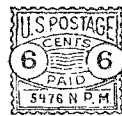
Type 1b



Type 2



Type 3



## TYPE FW METERS

42	Indianapolis, Ind.	1D P	495	Sacramento, Calif.	3 R
42	Chicago, Ill.	1E P	495	Glendale, Calif	3 R
NFM101	" "	1½ R	495	Atlanta, Ga.	3 R
NFM101	N.Y.	1½ R	496	Portland, Ore.	3 R-P
225	S.F.	2 R	496	L.A.	3 R
452	S.F.	3 R	497	S.F.	3 R
452	L.A.	3 R	497	L.A.	3 R
453	L.A.	3 N	497	Long Beach, Calif.	3 R
454	L.A.	2 R-P	497	Monrovia, Calif. (B)	3 R
457	S.F.	3 R	498	Berkeley, Calif.	3 R
458	Sacramento, Calif.	3 R	499	S.F.	3 R
459	S.F.	3 R	499	L.A.	3 R
460	L.A.	3 R	499	San Gabriel, Calif.	3 R
461	San Bernardino, Calif.	3 R	500	L.A.	1 P
461	Long Beach, Calif.	3 R	500	S.F.	1E R
461	Pasadena, Calif.	3 B	500	Waterbury, Conn.	1E R
462	" "	3 R	501	Sacramento, Calif.	1½ O-R
463	S.F.	3 R	501	S.F.	1½ R
464	S.F.	3 P	502	Beverly Hills, Calif.	1 P-R
464	Chester, Pa.	3 R	502	L.A.	1D 1E R
464	Rochester, N.Y.	3 G	503	Oakland, Calif.	1 R
465	S.F.	3 R	503	S.F.	1 R
465	West Chester, Pa.	3 R	505	S.F.	3 R
465	Kansas City, Mo.	3 R	506	L.A.	2 P-R
466	L.A.	2 R	506	San Fernando, Calif.	2 R
466	Burbank, Calif.	2 R	507	L.A.	2 R
466	Long Beach, Calif.	2 R	508	L.A.	2 R
467	S.F.	2 R	510	S.F.	2 R
468	S.F.	2 R	511	S.F.	2 R
469	L.A.	2 R	512	Oakland, Calif.	2 R
470	S.F.	2 R	512	San Gabriel, Calif.	2 R
470	Pasadena, Calif.	2 R	513	S.F.	2 R
472	S.F.	2 R	514	L.A.	2 R
472	Santa Monica, Calif.	2 R	515	S.F.	2 R
472	Hollywood, Calif.	2 R	516	S.F.	2 R
473	S.F.	2 R	517	S.F.	2 R
474	L.A.	2 R	518	S.F.	2 R
474	N.Y.	2 R	519	L.A.	2 R
475	L.A.	2 R	520	S.F.	3 R
486	S.F.	3 R	520	Saint Louis, Mo.	3 R
486	San Jose, Calif.	3 R	520	Ardmore, Pa.	3 R
486	L.A.	3 R	523	S.F.	1½ N
487	Beverly Hills, Calif.	3 R	523	Kansas City, Mo.	1½ R
488	Oakland, Calif.	3 R	524	L.A.	3 R
488	Norristown, Pa.	3 R	524	Glendale, Calif.	3 R
489	S.F.	3 R	525	S.F.	3 R
489	Oakland, Calif.	3 R	525	L.A.	3 R
489	L.A.	3 R-P	526	Santa Monica, Calif.	3 R
489	N.Y.	3 R	NP526	San Diego, Calif.	3 R
489	Chicago, Ill.	3 R	527	S.F.	3 R
489	South Pasadena, Calif.	3 R	528	Sacramento, Calif.	3 R
490	S.F.	3 R	528	Oakland, Calif.	3 R
491	S.F.	3 R	529	Berkeley, Calif.	3 R
492	S.F.	3 R	530	S.F.	3 R
493	S.F.	3 R	531	L.A.	3 R
494	L.A.	3 R	532	S.F.	3 R
494	Portland, Ore.	3 R-P	533	S.F.	3 R
494	North Hollywood, Calif.	3 R	533	Philadelphia, Pa.	3 R

533	Norristown, Pa.	3 R	572	Kansas City, Mo.	3 R
534	L.A.	3 R	573	L.A.	3 N
535	S.F.	3 R	574	S.F.	3 R
535	Van Nuys, Calif.	3 R	574	L.A.	3 R
536	L.A.	3 R	574	Long Beach, Calif.	3 R
537	S.F.	3 R	574	San Bernardino, Calif.	3 R
538	S.F.	3 R	575	Sacramento, Calif.	3 R
539	S.F.	3 R	575	Santa Barbara, Calif.	3 R
539	Sacramento, Calif.	3 R	575	L.A.	3 R
539	L.A.	3 R	575	Compton, Calif.	3 R
539	Monterey Park, Calif.	3 R	575	Chicago, Ill. (B)	3 R
540	L.A.	3 R	576	Sacramento, Calif.	3 R
541	L.A.	3 R	576	L.A.	3 R
542	L.A.	2 R	577	S.F.	3 R
543	S.F.	3 R	579	L.A.	2 R-N
543	L.A.	3 R	580	S.F.	2 R
544	L.A.	3 R	580	Seattle, Wash.	2 R
545	L.A.	3 R	581	L.A.	2 R
546	Portland, Ore.	3 R	582	Minneapolis, Minn.	2 R
546	Whittier, Calif.	3 R	583	S.F.	2 R
546	Altadena, Calif.	3 R	584	S.F.	2 R
546	L.A.	3 R	584	L.A.	2 R
547	Sacramento, Calif.	3 R	585	L.A.	2 R-P
547	N.Y.	3 R	586	L.A.	2 R
547	Atlanta, Ga.	3 R	586	Pasadena, Calif.	2 R
548	L.A.	3 P	587	Chicago, Ill.	2 R-P
549	L.A.	2 R	588	L.A.	2 R
550	S.F.	2 R	589	S.F.	2 R
551	S.F.	2 R	589	San Bernardino, Calif.	2 R
551	L.A.	2 R	589	Hollywood Sta., L.A.	2 R
552	S.F.	2 R	590	L.A.	1A P
553	S.F.	2 R	590	Waterbury, Conn.	1D 1E R
553	Long Island City, N.Y.	2 R	590	N.Y.	1E R
554	S.F.	2 R	591	S.F.	1A P
555	Santa Monica, Calif.	2 R	591	S.F.	1E R
555	L.A.	2 R	592	L.A.	2 R
555	Hollywood Sta., L.A.	2 R	593	S.F.	2 R
556	Glendale, Calif.	2 R	593	L.A.	2 R
556	Chicago, Ill.	2 R	593	Alhambra, Calif.	2 R
557	L.A.	2 R	594	L.A.	2 R
558	S.F.	2 R	595	L.A.	2 R
558	Long Beach, Calif.	2 R	596	S.F.	2 R
559	L.A.	2 R	598	S.F.	2 R
560	L.A.	2 R	599	S.F.	2 R
561	N.Y.	1½ R	599	Huntington Park, Calif.	2 R
561	Elmsford, N.Y.	1½ R	599	San Bernardino, Calif.	2 R
562	L.A.	1½ R	600	S.F.	2 R
563	L.A.	1½ P-N	600	Philadelphia, Penna.	2 R
564	S.F.	1½ R	601	L.A.	2 R
565	S.F.	1½ P	601	Chicago, Ill.	2 R
565	L.A.	1½ R	602	L.A.	2 R
566	L.A.	1A 1E P	602	S.F.	2 R
566	N.Y.	1 1E P	602	San Jose, Calif.	2 R
566	N.Y.	1E G	603	L.A.	2 R
568	Portland, Ore.	1½ R	604	L.A.	2 R
570	S.F.	1 N	605	L.A.	2 R
570	Phoenix, Ariz.	1 R	606	S.F.	2 R
570	Chicago, Ill.	1 P	606	L.A.	2 R
570	" "	1E R	607	S.F.	3 R
571	L.A.	1A N-R	607	L.A.	3 R

608	Terminal Island, Calif.	3 R	644	S.F.	2 R
NP608	N.Y.	3 P	646	L.A.	2 R
NP608	L.A.	3 R	647	L.A.	2 R
609	L.A.	3 R	647	S.F.	2 R
609	Long Beach, Calif.	3 R	649	L.A.	2 R
610	S.F.	3 R	650	L.A.	2 R
610	Atlanta, Ga.	3 R	651	Long Beach, Calif.	2 R
610	Jenkintown, Pa.	3 R	651	S.F.	2 R
610	Chicago, Ill.	3 R	652	Pottstown, Pa.	2 R
611	S.F.	3 R	653	S.F.	2 R
611	San Bernardino, Calif.	3 R	653	Chicago, Ill.	2 R
612	Pasadena, Calif.	3 R	654	L.A.	2 R
613	L.A.	3 P	654	L.A.	1D P
615	L.A.	3 R	654	N.Y.	1D R
616	L.A.	3 R	654	New Haven, Conn.	1D 1E P
616	Long Beach, Calif.	3 R	654	Boston, Mass	1 1E P
617	L.A.	3 R	655	Beverly Hills, Calif	1 R
618	L.A.	3 R	655	N.Y.	1E R
619	Santa Ana, Calif.	3 R	656	N.Y.	1D R
619	Compton, Calif.	3 R	656	Elmsford, N.Y.	1D 1E R
619	Pasadena, Calif.	3 R	657	L.A.	1½ P
620	L.A.	3 R	658	Terminal Island, Calif.	1½ N
620	Hollywood Sta., L.A.	3 R	659	L.A.	1A P
620	Hollywood, Calif.	3 R	659	N.Y.	1D 1E R
621	Portland, Ore.	3 R-P	660	L.A.	1 P
621	L.A.	3 R	660	N.Y.	1D R
621	Coatesville, Pa.	3 R	660	Waterbury, Conn.	1E R
622	L.A.	3 R	662	S.F.	1E R
622	Seattle, Wash.	3 R	665	N.Y.	1½ P
623	Sacramento, Calif.	3 R	665	Philadelphia, Penna.	1½ R
624	L.A.	3 R	666	L.A.	1½ R
625	S.F.	3 R	669	S.F.	1½ P-R
626	Long Beach, Calif.	3 R	669	Sacramento, Calif.	1½ R
627	S.F.	3 R	670	L.A.	2 R
628	L.A.	3 R	671	L.A.	2 R
629	S.F.	3 R	672	L.A.	2 R
629	Arlington, N.J.	3 R	673	L.A.	2 R
629	Long Island City, N.Y.	3 R	673	San Diego, Calif.	2 R
630	L.A.	3 R	673	Seattle, Wash.	2 R
631	Sacramento, Calif.	3 R	674	S.F.	2 R
631	Redlands, Calif.	3 R	675	Pottstown, Pa.	2 R
632	S.F.	3 R	676	L.A.	2 R
632	Saint Louis, Mo.	3 R	676	S.F.	2 R
633	L.A.	3 R	676	Oakland, Calif.	2 R
634	L.A.	3 R	677	L.A.	2 R
634	Berkeley, Calif.	3 R	677	Inglewood, Calif.	2 R
634	Sacramento, Calif.	3 R	678	L.A.	2 R
635	S.F.	3 R	679	L.A.	2 R
635	Saint Louis, Mo.	3 R	680	L.A.	2 R
637	Santa Ana, Calif.	3 R	681	L.A.	2 R
638	Seattle, Wash.	3 R	682	L.A.	2 R
639	Sacramento, Calif.	3 R	682	Portland, Ore.	2 R
639	S.F.	3 R	683	L.A.	2 R
639	L.A.	3 R	684	Philadelphia, Pa.	2 R
640	L.A.	2 R	686	Seattle, Wash.	2 R
640	Brooklyn, N.Y.	2 R	686	San Bernardino, Calif.	2 R
640	Hollywood Sta., L.A.	2 R	686	L.A.	2 R
641	Seattle, Wash.	2 R	687	S.F.	2 R
642	L.A.	2 R	688	S.F.	3 R
642	S.F.	2 R	688	L.A.	3 R

688	Long Beach, Calif.	3 R	732	Phoenix, Ariz.	3 R
688	San Bernardino, Calif.	3 R	732	Santa Barbara, Calif.	3 R
689	S.F.	3 R	732	S.F.	3 R
690	L.A.	3 R	733	S.F.	3 R
691	San Bernardino, Calif.	3 R	736	S.F.	1½ P-R
692	S.F.	3 R	737	Santa Ana, Calif.	1 P
692	N.Y.	3 P	738	S.F.	1DD 1E R
693	Seattle, Wash.	3 R	740	Chicago, Ill	1D R
694	L.A.	3 R	740	Wheaton, Ill.	1D R
694	Phoenix, Ariz.	3 R	741	S.F.	1A P
694	Chicago, Ill.	3 R	741	Berkeley, Calif.	1A P
695	Oakland, Calif.	3 R-P	741	L.A.	1D R
696	L.A.	3 R	742	S.F.	1A P
697	L.A.	3 R	NEM742	N.Y.	1½ R
698	L.A.	3 R	743	Chicago, Ill.	1 1D 1E R
699	L.A.	3 R	744	S.F.	1DD R
699	Jenkintown, Pa.	3 R	744	N.Y.	1D R
700	Phoenix, Ariz.	1½ R	745	L.A.	2 R
700	L.A.	1½ P	746	Seattle, Wash.	2 R
701	N.Y.	1½ R	747	Phoenix, Ariz.	2 R
702	L.A.	2 R	748	S.F.	2 R
703	L.A.	2 P	749	S.F.	2 R
703	N.Y.	2 R	750	Portland, Ore.	2 R
704	L.A.	2 R	750	L.A.	2 R
705	L.A.	2 R	750	San Bernardino, Calif.	2 R
706	Chicago, Ill.	2 R	751	Portland, Ore.	2 R
706	North Hollywood, Calif.	2 R	751	L.A.	2 R
707	Glendale, Calif.	2 R	753	S.F.	2 R
707	Santa Ana, Calif.	2 R	755	Chicago, Ill.	2 R
708	S.F.	2 R	756	L.A.	2 R
708	L.A.	2 R	756	Philadelphia, Pa.	2 R
709	L.A.	2 B	757	L.A.	3 R
710	S.F.	2 R	758	Hollywood Calif.	3 R
711	S.F.	2 R	758	L.A.	3 R
712	S.F.	2 R	758	Berkeley, Calif.	3 R
714	L.A.	2 R	759	Portland, Ore.	3 P
715	Hollywood, Calif.	2 R	760	Sacramento, Calif.	3 R
715	L.A.	2 R	760	S.F.	3 R
716	L.A.	2 R	761	Alameda, Calif.	3 R
717	L.A.	2 R	762	Sacramento, Calif.	3 R
718	S.F.	3 R	763	" "	3 R
719	S.F.	3 R	763	L.A.	3 R
719	N.Y.	3 P	763	Long Island City, N.Y.	3 R
720	San Jose, Calif.	3 R	763	N.Y.	3 R
721	L.A.	3 R	764	L.A.	3 R
721	N.Y.	3 R	764	S.F.	3 R
723	L.A.	3 R	765	L.A.	3 R
724	S.F.	3 R	766	S.F.	3 R
725	S.F.	3 R	766	San Bernardino, Calif.	3 R
725	L.A.	3 R	767	S.F.	3 R
726	S.F.	3 P-R	767	Berkeley, Calif.	3 R
727	L.A.	3 R	768	L.A.	3 R
728	S.F.	3 R	768	San Bernardino, Calif.	3 R
728	N.Y.	3 P	769	S.F.	1½ N-R
728	Kearny, N.J.	3 R	769	Chicago, Ill.	1½ R
729	Long Beach, Calif.	3 R	770	Montclair, N.J.	1½ R
730	L.A.	3 R	771	N.Y.	1½ R
730	Portland, Ore.	3 R	772	S.F.	1½ R
730	Philadelphia, Penna.	3 R	772	Sacramento, Calif.	1½ R
731	L.A.	3 R	772	San Jose, Calif.	1½ R



773	L.A.	2 R	819	L.A.	2 R
773	Santa Monica, Calif.	2 R	819	South Pasadena, Calif.	2 R
773	S.F.	2 R	820	Redondo Beach, Calif.	3 R
774	S.F.	2 R	820	Jenkintown, Pa.	3 R
776	L.A.	2 R	821	Seattle, Wash.	3 R
776	Chicago, Ill.	2 R	823	San Diego, Calif.	3 R
777	Glendale, Calif.	2 R	824	Glendale, Calif.	3 R
777	Oakland, Calif.	2 R	825	Sacramento, Calif.	3 R
778	S.F.	2 R	826	Van Nuys, Calif.	3 R
779	S.F.	2 R	826	San Diego, Calif.	3 R
779	N.Y.	2 R	827	S.F.	3 R
779	Jersey City, N.J.	2 R	827	Seattle, Wash.	3 R
780	S.F.	2 R	828	L.A.	3 R
780	N.Y.	2 R	828	Chicago, Ill.	3 R
781	S.F.	2 R	828	Philadelphia, Penn.	3 R
781	Brooklyn, N.Y.	2 R	828	Ardmore, Pa.	3 R
782	S.F.	2 R	829	L.A.	3 R
783	Philadelphia, Penna.	2 R	830	Phoenix, Ariz.	3 R
784	S.F.	2 R	830	Atlanta, Ga.	3 R
784	L.A.	2 R	830	Chicago, Ill.	3 R
785	L.A.	2 R	831	L.A.	3 R-P
786	Seattle, Wash.	2 R	831	N.Y.	3 R
787	L.A.	2 R	832	L.A.	3 R
788	Compton, Calif.	3 R-P	832	Long Island City, N.Y.	3 R
790	Minneapolis, Minn.	3 R	833	Hollywood, Calif.	3 R
791	L.A.	3 R	835	S.F.	3 R
791	Chester, Pa.	3 R	836	L.A.	3 R
792	L.A.	3 R	836	Beverly Hills, Calif.	3 R
792	Ardmore, Pa.	3 R	838	L.A.	3 R
792	Chicago, Ill.	3 R	839	L.A.	3 R
793	San Bernardino, Calif.	3 R	839	Sacramento, Calif.	3 R
795	Sacramento, Calif.	3 R	839	Monrovia, Calif. (B)	3 R
796	Berkeley, Calif.	3 R	840	Long Beach, Calif.	3 R-B
796	Waterbury, Conn.	3 R	840	Chicago, Ill.	3 R
798	S.F.	3 R	841	Santa Monica, Calif.	3 R
798	Oakland, Calif.	3 R	841	Riverside, Calif.	3 R
799	S.F.	3 R	842	L.A.	2 R
799	L.A.	3 R	842	San Bernardino, Calif.	2 R
800	S.F.	1D 1E R	843	L.A.	2 R
801	Philadelphia, Penna.	1E R	844	L.A.	2 R
802	Chicago, Ill.	6 R	844	S.F.	2 R
803	Washington, D.C.	1½ R	844	Jamaica, N.Y.	2 R
804	L.A.	1½ R	845	L.A.	2 R
805	N.Y.	1½ R	845	Redlands, Calif.	2 R
807	N.Y.	1D P	846	L.A.	2 R
807	N.Y.	1E R	847	Whittier, Calif.	2 R
808	S.F.	1A 1AD R	848	L.A.	2 R
809	S.F.	1DD R	849	Santa Monica, Calif.	2 R
809	L.A.	1D R	850	Portland, Ore.	2 R
809	Boston, Mass.	1E R	850	L.A.	2 R
810	S.F.	1DD 1E R	851	Portland, Ore.	2 R
810	S.F.	1DD P	853	L.A.	2 R
810	Sacramento, Calif.	1E R	853	Chicago, Ill.	2 R
811	Long Beach, Calif.	2 R	855	L.A.	2 R
815	L.A.	2 R	NP857	L.A.	1A R
816	San Bernardino, Calif.	2 R	NP857	Chicago, Ill.	1 1D R
816	Chicago, Ill.	2 R	NP858	L.A.	1 1A 1D 1E R
817	L.A.	2 R	NP859	S.F.	1 1D R
818	L.A.	2 R	NP859	S.F.	1 P
818	Hollywood Sta., L.A.	2 R	NP859	Beverly Hills, Calif.	1 R

NP860	Waterbury, Conn.	1D	1E R	897	Thompsonville, Conn.		3 R
NP860	New Haven, Conn.		1D R	898	Santa Monica, Calif.		3 R-P
NP860	Boston, Mass		1E R	898	L.A.		3 R
NP861	L.A.		1 $\frac{1}{2}$ R	899	San Diego, Calif.		3 R
NP862	L.A.		1 $\frac{1}{2}$ R	899	Branford, Conn.		3 R
NP862	N.Y.		1 $\frac{1}{2}$ R	900	Buffalo, N.Y.		1D R
NP863	N.Y.		1 $\frac{1}{2}$ R	900	L.A.		1 1E R
NP864	N.Y.		1 $\frac{1}{2}$ R	900	Minneapolis, Minn.		1E R
NP865	L.A.		1 $\frac{1}{2}$ R	901	San Diego, Calif.		1D 1E R
NP866	L.A.		1DD R	901	N.Y.		1 1D 1E R
NP866	Philadelphia, Penna.		1D R	901	Minneapolis, Minn.		1E R
NP867	Chicago, Ill.		1D R	902	Waterbury, Conn.		1D R
NP867	Kansas City, Mo.		1D R	902	N.Y.		1E R
NP867	" " "		1E P	902	Chicago, Ill.		1E R
NP869	S.F.		1 R	902	Boston, Mass.		1E R
870	S.F.		2 R	902	Minneapolis, Minn.		1E R
872	S.F.		2 R	903	Philadelphia, Penna.		1D 1E R
872	Oakland, Calif.		2 R	904	L.A.		1D R
NP874	L.A.		3 R	904	Chicago, Ill.		1D 1E R
NP874	Portland, Ore.		3 R	905	N.Y.		1D 1E R
NP874	San Bernardino, Calif.		3 R	905	New Haven, Conn.		1E P
NP875	L.A.		3 R	908	N.Y.		1 R
NP875	Long Beach, Calif.		3 R	908	Philadelphia, Penna.		1E R
NP876	N.Y.		3 R	908	Boston, Mass.		1E R
NP876	Waterbury, Conn.		3 R	912	(No townmark-L.I. City)		18 R
NP877	L.A.		3 R	912	REGISTERED/MAIL		18 R
NP877	Brooklyn, N.Y.		3 R	916	N.Y.		1 $\frac{1}{2}$ R
NP877	Saint Louis, Mo.		3 R	918	N.Y.		1 $\frac{1}{2}$ R
NP879	L.A.		3 R	918	Philadelphia, Pa.		1 $\frac{1}{2}$ R
NP879	Norwalk, Conn.		3 R	920	N.Y.		1 $\frac{1}{2}$ R
NP879	Plainfield, Conn.		3 R	920	Mount Vernon, N.Y.		1 $\frac{1}{2}$ R
NP879	Waterbury, Conn.		3 R	923	N.Y.		1 $\frac{1}{2}$ R
NP879	N.Y.		3 R	924	N.Y.		1 $\frac{1}{2}$ R
880	Santa Ana, Calif.		2 R	925	N.Y.		1 $\frac{1}{2}$ P
881	L.A.		2 R	927	N.Y.		1 $\frac{1}{2}$ R
881	Santa Barbara, Calif.		2 R	928	N.Y.		1 $\frac{1}{2}$ R
882	L.A.		2 R	930	N.Y.		1 $\frac{1}{2}$ R
883	Glendale, Calif.		2 R	931	Chicago, Ill.		1 $\frac{1}{2}$ R
885	L.A.		2 R	932	Kansas City, Mo.		1E P
886	N.Y.		3 R	933	Philadelphia, Pa.		1 R
887	S.F.		3 R	934	Waterbury, Conn.		1D R
887	San Jose, Calif.		3 R	934	Brooklyn, N.Y.		1D R
888	S.F.		3 R	934	N.Y.		1E R
889	L.A.		3 R	935	N.Y.		1D R
890	S.F.		3 R	935	Chicago, Ill.		1 1D 1E R
890	L.A.		3 R	936	Philadelphia, Penna.		1D R
891	Branford, Conn.		3 R	937	L.A.		1E R
891	N.Y.		3 P-R	937	Long Beach, Calif.		1E R
891	Arlington, Mass.		3 R	937	N.Y.		1E R
892	Oakland, Calif.		3 R	938	N.Y.		1D 1E R
892	S.F.		3 R	938	Minneapolis, Minn.		1E R
892	Pasadena, Calif.		3 R	939	New Haven, Conn.		1 1D 1E R
893	S.F.		3 R	939	Waterbury, Conn.		1E R
893	Sacramento, Calif.		3 R	940	Chicago, Ill.		1D R
894	Chicago, Ill.		3 R	940	Philadelphia, Penna.		1E R
895	Santa Ana, Calif.		3 R	941	Chicago, Ill.		1D 1E R
896	L.A.		3 R	942	Philadelphia, Penna.		1E R
896	N.Y.		3 R	942	Brooklyn, N.Y.		1E R
897	San Bernardino, Calif.		3 R	943	Waterbury, Conn.		1D R
897	Chicago, Ill.		3 R	943	N.Y.		1D 1E R

943	Newark, N.J.		1D R	1005	Kansas City, Mo.		1E R
944	Chicago, Ill.	1D	1E R	1006	Philadelphia, Penna.		1D R
944	L.A.		1E R	1007	" "		1E P
945	Chicago, Ill.		1 $\frac{1}{2}$ R	1007	Chicago, Ill.		1E R
946	L.A.		1 $\frac{1}{2}$ R	1007	Saint Louis, Mo.		1E R
947	L.A.		1 $\frac{1}{2}$ R	1009	L.A.		1D R
949	L.A.		1 $\frac{1}{2}$ R	1010	Sacramento, Calif.		1 $\frac{1}{2}$ R
949	S.F.		1 $\frac{1}{2}$ R	1011	N.Y.	1 $\frac{1}{2}$ 1 $\frac{1}{2}$	1E R
950	L.A.		1 $\frac{1}{2}$ R	1012	Sacramento, Calif.		1 $\frac{1}{2}$ R
952	N.Y.		1D R	1012	S.F.		1 $\frac{1}{2}$ R
953	Chicago, Ill.		1 R	1012	San Jose, Calif.		1 $\frac{1}{2}$ R
955	Sacramento, Calif.		1 $\frac{1}{2}$ R	1013	Sacramento, Calif.		1 $\frac{1}{2}$ R
956	L.A.		1 $\frac{1}{2}$ R	1014	San Jose, Calif.		1 $\frac{1}{2}$ R
958	(no townmark)		21 R	1016	Minneapolis, Minn.		1 $\frac{1}{2}$ R
962	N.Y.		1 $\frac{1}{2}$ R	1017	Chicago, Ill.		1 $\frac{1}{2}$ R
963	N.Y.		1 $\frac{1}{2}$ R	1018	Kansas City, Mo.	1 $\frac{1}{2}$ 1 $\frac{1}{2}$	1E R
964	Wheaton, Ill.		1 $\frac{1}{2}$ R	1019	L.A.		1 R
966	Chicago, Ill.		1E R-P	1020	Chicago, Ill.	1 1D	1E R
966	Kansas City, Mo.		1E P	1020	Atlanta, Ga.		1E R
967	Chicago, Ill.		1 1D R	1021	Chicago, Ill.		1E R
968	L.A.	1D	1E R	1022	" "		1D 1E R
969	Chicago, Ill.		1D R	1023	" "	1 1D	1E R
969	L.A.		1E R	1023	Saint Louis, Mo.		1E R
970	Chicago, Ill.	1 1D	1E R	1024	Chicago, Ill.	1 1D	1E R
970	Fort Atkinson, Wis.		1D R	1024	Saint Louis, Mo.		1E R
971	Chicago, Ill.		1D R	1024	Philadelphia, Penna.		1E R
971	" "		1E P	1025	N.Y.		1D G
972	" "		1 $\frac{1}{2}$ R	1025	N.Y.		1E R
972	Rochester, N.Y.		1 $\frac{1}{2}$ R	1025	Minneapolis, Minn.		1E R
974	Chicago, Ill.		1 $\frac{1}{2}$ R	1026	N.Y.		1D R
975	" "		1 $\frac{1}{2}$ R	1026	Kansas City, Mo.		1D R
976	" "		1 $\frac{1}{2}$ R	1027	N.Y.		1D R
977	" "		1D R	1028	Philadelphia, Penna.		1E R
977	Fort Atkinson, Wis.	1D	1E R	1029	Chicago, Ill.		1 $\frac{1}{2}$ R
979	Chicago, Ill.	1D	1E R	1029	Milwaukee, Wis.		1 $\frac{1}{2}$ R
981	" "		1 $\frac{1}{2}$ R	1030	Chicago, Ill.		1 $\frac{1}{2}$ R
982	" "		1 $\frac{1}{2}$ R	1032	" "		1 $\frac{1}{2}$ R
983	N.Y.	1D	1E R	1033	" "		1 $\frac{1}{2}$ R
983	S.F.		1E R	1034	" "		1 $\frac{1}{2}$ R
984	L.A.	1DD	1E R	1035	N.Y.	1 $\frac{1}{2}$	R-P
984	Philadelphia, Penna.		1E R	1036	N.Y.		1 $\frac{1}{2}$ R
985	N.Y.	1D	1E R	1037	N.Y.		1 $\frac{1}{2}$ R
985	N.Y.		1E P	1038	N.Y.		1 $\frac{1}{2}$ R
987	N.Y.		1E P	1040	L.A.		1 $\frac{1}{2}$ R
987	Jersey City, N.J.	1D	1E R	1041	Chicago, Ill.		1 $\frac{1}{2}$ R
988	Saint Paul, Minn.		1D R	1045	" "	1D	1E R
990	L.A.		1 $\frac{1}{2}$ R	1046	Philadelphia, Penna.		1E R
991	L.A.		1 $\frac{1}{2}$ R	1046	N.Y.		1E R
992	L.A.		1 $\frac{1}{2}$ R	1046	Minneapolis, Minn.		1E R
993	S.F.		1 $\frac{1}{2}$ R	1047	Chicago, Ill.		1D R
993	San Jose, Calif.		1 $\frac{1}{2}$ R	1047	Glendale, Calif.		1E R
995	Rochester, N.Y.		12 R	1048	Fort Wayne, Ind.		1D R
996	N.Y.		1 $\frac{1}{2}$ R	1048	Wheaton, Ill.	1D	1E R
997	S.F.		1 $\frac{1}{2}$ R	1048	Chicago, Ill.		1 R
997	Sacramento, Calif.		1 $\frac{1}{2}$ R	1048	" "		1E P
999	N.Y.		1 $\frac{1}{2}$ R	1049	S.F.		4 $\frac{1}{2}$ R
1000	S.F.		1 $\frac{1}{2}$ R	1050	S.F.		1 $\frac{1}{2}$ R
1001	Saint Paul, Minn.		1 $\frac{1}{2}$ R	1050	San Jose, Calif.		1 $\frac{1}{2}$ R
1002	Portland, Ore.		1 $\frac{1}{2}$ R	1055	Chicago, Ill.		1 $\frac{1}{2}$ R
1003	Chicago, Ill.		1 $\frac{1}{2}$ R	1057	" "		1 $\frac{1}{2}$ R

1058	Milwaukee, Wis.	1½	R	1124	Pasadena, Calif.	1E	R		
1059	Chicago, Ill.	1½	R	1125	Chicago, Ill.	1 1E	R		
1062	West Bend, Wis.	1½	R	1125	" "	1E	P		
1063	L.A.	1½	R	1125	N.Y.	1E	P		
1065	Chicago, Ill.	1½	R	1125	Saint Louis, Mo.	1E	R		
1068	" "	1D	1E	R	" " "	1E	R		
1068	" "		1E	G	1126	Philadelphia, Penna.	1E	R	
1069	" "		1E	R	1130	Santa Monica, Calif.	2	P	
1070	" "	1	1D	R	1132	Hollywood Sta., L.A.	2	R	
1071	L.A.	1	1D	R	1133	L.A.	2	R	
1072	Seattle, Wash.		1D	R	1134	L.A.	2	R	
1072	Kansas City, Mo.		1E	R	1139	Chicago, Ill.	1E	R	
1073	Topeka, Kans.		1D	R	1139	N.Y.	1E	R	
1073	Kansas City, Mo.		1E	R	1139	Minneapolis, Minn.	1E	R	
1073	Boston, Mass.		1E	R	1140	L.A.	1E	R	
1074	Saint Louis, Mo.		1E	R	1141	L.A.	1E	R	
1075	S.F.		1E	R	1142	Minneapolis, Minn.	1E	R	
1076	S.F.		1E	R	1143	Philadelphia, Penna.	1E	R	
1078	Philadelphia, Penna.		1E	R	1145	" " "	1E	R	
1078	Minneapolis, Minn.		1E	R	1145	Minneapolis, Minn.	1E	R	
1080	N.Y.		1½	R	1150	Chicago, Ill.	1E	R	
1081	L.A.		1E	R	1151	Champaign, Ill.	1E	R	
1082	Topeka, Kans.		1D	R	1151	Chicago, Ill.	1E	R	
1082	Kansas City, Mo.		1E	R	1154	Saint Louis, Mo.	1E	R	
1083	S.F.	1D	1E	R	1155	Chicago, Ill.	1E	P	
1084	L.A.		1E	R	1160	Venice, Calif.	2	R	
1087	L.A.	1½	1½	D	R	1161	Lynwood, Calif.	2	R
M1090	Monterey Park, Calif.		2	R	1164	Hermosa Beach, Calif.	2	R	
M1091	L.A.		2	R	1169	Manhattan Beach, Calif.	2	R	
NP1092	Saint Louis, Mo.		3	R	1176	Beverly Hills, Calif.	2	R	
1095	L.A.		1E	R	1500	Chicago, Ill.	3	R	
1095	Long Beach, Calif.		1E	R	1501	Philadelphia, Pa.	3	R	
1095	N.Y.		1E	P	1501	Philadelphia, Penna.	3	R	
1097	Philadelphia, Pa.		1	R	1504	" "	3	R	
1098	Chicago, Ill.		1E	P	1506	Revere, Mass. (B)	3	R	
1099	Minneapolis, Minn.		1E	R	1507	" " "	3	R	
1100	Chicago, Ill.		1E	R	1507	" " "	3	R	
1100	Milwaukee, Wis.		1E	R	1508	Philadelphia, Pa.	3	R	
1101	Chicago, Ill.	1	1D	1E	R	1509	East Weymouth, Mass. (B)	3	R
1102	Topeka, Kans.		1E	R	1511	Philadelphia, Penna.	3	R	
1103	L.A.		1E	R	1511	Chester, Pa.	3	R	
1103	Long Beach, Calif.		1E	R	1512	Atlanta, Ga.	3	R	
1103	Minneapolis, Minn.		1E	R	1512	Rochester, N.Y.	3	G	
1105	San Diego, Calif.		1D	R	1515	" "	3	R	
1105	Philadelphia, Pa.		1	R	1517	Chicago, Ill.	3	R	
1106	L.A.		1E	R	1517	" " (B)	3	R	
1107	Washington, D.C.		1E	R	1517	Rochester, N.Y.	3	R	
1108	Rochester, N.Y.	1D	1E	R	1519	Atlanta, Ga.	3	R	
1108	L.A.		1E	R	1531	Rochester, N.Y.	16	R	
1108	Boston, Mass.		1E	R	1536	N.Y.	3	R	
1119	Philadelphia, Penna.		1½	R	1537	Jenkintown, Pa.	3	R	
1120	La Crescenta, Calif.		2	R	1538	Jersey City, N.J.	3	R	
1121	Rochester, N.Y.		6	R	1538	N.Y.	3	R	
1123	L.A.		1E	R	1539	Long Island City, N.Y.	3	R	
1123	Chicago, Ill.		1E	P	1543	South Bend, Ind.	4½	R	
1123	Saint Louis, Mo.		1E	R	M7700	S.F.	3	R	
1124	Chicago, Ill.		1E	P					

5000	N.Y.		3 R	5032	L.A.		2 R
5000	L.A.		3 R	5032	Washington, D.C.		3 6 R
5000	Portland, Ore.	3 6 15	R	5033	L.A.		2 3 R
5001	L.A.		2 3 R	5033	Pasadena, Calif.		2 R
5002	S.F.		2 R	5033	S.F.		3 R
5002	Chicago, Ill.		3 R	5034	Dallas, Tex.		3 6 R
5004	S.F.	2 3 15	R	5035	L.A.		3 R
5004	Kansas City, Mo.		3 R	5036	L.A.	1D	2 3 R
5005	L.A.		2 3 R	5037	Pasadena, Calif.		3 6 R
5005	Indianapolis, Ind.		3 6 R	5038	S.F.	2 3 6	10 R
5006	L.A.		3 R	5038	N.Y.		2 3 R
5007	N.Y.		3 R	5039	Kansas City, Mo.		3 6 R
5007	Memphis, Tenn.		3 6 R	5040	L.A.	2 3 6	R
5007	Chicago, Ill.	(B)	3 R	5041	Samoa, Calif.		3 6 R
5008	S.F.	2 3 10	R	5042	Seattle, Wash.		2 R
5008	Samoa, Calif.		3 6 R	5043	San Diego, Calif.		3 R
5009	L.A.		2 3 R	5043	Passaic, N.J.		3 R
5009	Philadelphia, Penna.	3 6 15	R	5044	Seattle, Wash.	2 3	R
5010	N.Y.		2 3 R	5044	L.A.		3 R
5012	N.Y.	1E	2 3 R	5044	Pomona, Calif.		3 R
5013	L.A.		3 R	5045	N.Y.		2 R
5013	Minneapolis, Minn.		3 R	5045	Passaic, N.J.		3 R
5014	Pasadena, Calif.	3 15	R	5046	Long Island City, N.Y.	2 3	R
5014	South Pasadena, Calif.	2 3 6 15	R	5046	N.Y.		3 R
5014	L.A.		3 6 R	5047	Brooklyn, N.Y.		3 R
5015	L.A.		2 R	5048	N.Y.		3 R
5015	Chicago, Ill.		3 R	5049	L.A.		2 R
5015	Omaha, Neb.		3 R	5049	N.Y.	2 3	R
5016	S.F.	2 3 10	R	5052	S.F.	2 3 6	R
5016	Oakland, Calif.	2 3 10	R	5052	L.A.	2 3	R
5016	N.Y.		3 R	5053	Philadelphia, Penna.		3 R
5017	N.Y.	2 3 6	R	5053	Oakland, Calif.		3 R
5018	S.F.	2 3 6	R	5053	S.F.	3 6	R
5019	S.F.		2 R	5053	Sacramento, Calif.		2 R
5019	Brooklyn, N.Y.		3 R	5053	L.A.		3 R
5019	Passaic, N.J.		3 R	5054	S.F.		2 3 R
5019	Jamaica, N.Y.		3 R	5055	L.A.	1½	2 3 R
5020	L.A.	1DI	1½ R	5056	Oakland, Calif.		3 R
5020	N.Y.		3 R	5056	Sacramento, Calif.	2 3 15	R
5020	Brooklyn, N.Y.		3 R	5056	N.Y.		2 3 R
5021	N.Y.		3 R	5056	Chicago, Ill.	2 3 6	R
5021	Salt Lake City, Utah	2 3 6 15	R	5057	L.A.		2 3 R
5022	S.F.		3 R	5057	Long Beach, Calif.		3 R
5022	Detroit, Mich.	2 3 6	R	5057	N.Y.		3 R
5023	Brooklyn, N.Y.		3 R	5058	S.F.		3 R
5023	N.Y.		3 R	5058	L.A.	2 3	R
5024	S.F.	2 3 6 10	R	5058	Oakland, Calif.		3 R
5025	L.A.		3 R	5058	Kansas City, Mo.	2 3 6 15	R
5026	L.A.		1½ R	5058	N.Y.	1 3 8	R
5026	N.Y.		3 R	5059	Oakland, Calif.	1 1D	3 15 R
5027	Pittsburgh, Pa.	2 3 6 15	R	5059	Berkeley, Calif.		3 15 R
5028	S.F.	1½	2 3 R	5060	L.A.	1½	2 3 6 R
5028	L.A.		3 R	5061	S.F.		1D R
5029	Brooklyn, N.Y.		2 3 R	5061	Oakland, Calif.		3 R
5030	L.A.		2 3 R	5061	L.A.	1E	2 3 10 R
5030	N.Y.		3 R	5062	San Jose, Calif.		3 6 R
5031	Brooklyn, N.Y.		3 R	5063	L.A.		3 R
5031	L.A.	2 3 6 15	R	5063	Sacramento, Calif.		2 R
5031	Pasadena, Calif.		3 R	5063	S.F.	1 2 3 10	R
				5063	Eureka, Calif.	1 3 10	R

5064	S.F.		3 R	5089	S.F.		2 3 6 R
5064	Hollywood, Calif.		3 R	5090	S.F.		2 3 6 R
5064	N.Y.		3 R	5091	S.F.		2 3 R
5064	Ogden, Utah		2 3 6 R	5091	Chicago, Ill. (B)		3 R
5065	Terminal Island, Calif.		1½ 3 R	5093	Oakland, Calif.		3 R
5065	L.A.	1D 1E	2 2E 3 6 R	5093	Alameda, Calif.		3 R
5066	L.A.		2 3 6 15 R	5093	L.A.		2 3 6 R
5066	Chicago, Ill.		2 3 6 R	5093	Spokane, Wash.		3 6 R
5067	S.F.		2 3 R	5093	Brooklyn, N.Y.		3 R
5067	Philadelphia, Pa.		2 R	5094	S.F.	1½	2 3 6 R
5067	Buffalo, N.Y.		3 R	5095	L.A.		2 3 6 R
5067	Saint Louis, Mo.		3 R	5096	S.F.		2 3 R
5068	S.F.		2 3 6 R	5096	L.A.		2 3 R
5068	Spokane, Wash.		2 3 6 R	5097	S.F.		2 3 6 R
5069	S.F.	1 2 3	10 R	5097	San Jose, Calif.		2 3 6 R
5070	Hollywood, Calif.		3 R	5098	L.A.		2 3 R
5070	L.A.		2 3 10 R	5098	Santa Barbara, Calif.		3 R
5070	L.A.		3 B	5098	Long Beach, Calif.		3 R
5071	S.F.		1D P	5099	L.A.	2 3 6	15 R
5071	S.F.	1D 1E	2 R	5099	Hollywood, Calif.	2 6	15 R
5071	San Jose, Calif.	1 2 3	R	5099	Philadelphia, Penna.	2 3	R
5071	Beverly Hills, Calif.		3 R	5099	Philadelphia, Pa.		2 R
5072	S.F.		2 3 R	5099	N.Y.	2 3 6	15 R
5072	L.A.		2 R	5100	Beverly Hills, Calif.	1 1D	3 6 R
5072	Van Nuys, Calif.		2 3 R	5100	" " "		1 P
5073	S.F.		2 3 R	5100	L.A.	1½	2 3 6 R
5073	Oakland, Calif.		3 R	5100	Santa Ana, Calif.		1 3 R
5074	San Jose, Calif.		3 R	5100	S.F.	1½	3 R
5074	Chicago, Ill.	1 1D	2 3 R	5101	S.F.	1½	2 3 6 R
5074	Detroit, Mich.		2 R	5101	Seattle, Wash.		3 R
5074	L.A.		2 3 R	5101	Ogden, Utah		3 R
5074	Philadelphia, Penna.	1E	3 R	5102	S.F.		3 R
5075	S.F.	1D	2 3 R	5102	Yosemite National Park, Calif.	1 1D 1E 1½ 1½D	3 6 R
5075	N.Y.	1E 2 2E	3 6 R	5103	Sacramento, Calif.		2 3 R
5076	L.A.		2 3 R	5104	S.F.		2 3 10 R
5077	S.F.		2 3 R	5104	Oakland, Calif.	2 3 6	10 R
5077	Alameda, Calif.		3 R	5104	Berkeley, Calif.		2 R
5077	L.A.		3 R	5105	S.F.		2 3 R
5078	S.F.		2 3 R	5105	Oakland, Calif.		3 R
5078	San Jose, Calif.		3 R	5105	Philadelphia, Penna.		3 R
5079	S.F.		1½ 2 R	5106	S.F.		2 3 6 R
5079	Seattle, Wash.		1½ 2 3 R	5106	Brooklyn, N.Y.	1½	2 3 6 R
5079	Kansas City, Mo.	1D 1E	1½ 3 R	5106	Boston, Mass.		3 R
5080	S.F.		2 4 R	5107	S.F.		2 R
5080	N.Y.		1½ 3 R	5107	Berkeley, Calif.		3 R
5081	Sacramento, Calif.		3 6 12 R	5107	San Jose, Calif.		3 R
5081	S.F.		2 3 R	5107	L.A.	1½	3 R
5082	S.F.		1D R	5108	S.F.		2 3 R
5082	L.A.		2 3 6 R	5109	S.F.		2 3 6 R
5082	Chicago, Ill.	2 3 6	15 R	5109	L.A.		2 3 R
5083	Phoenix, Ariz.		3 R	5110	S.F.		3 R
5083	Sacramento, Calif.	1 2 3	R	5110	Sacramento, Calif.		3 R
5083	S.F.		3 R	5110	Alameda, Calif.		3 R
5084	S.F.		2 3 R	5110	Oakland, Calif.	2 3 10	R
5084	Chicago, Ill.		3 R	5111	S.F.	1DD	2 3 10 R
5084	Kansas City, Mo.		2 3 R	5111	Chicago, Ill.	1E	2 R
5085	L.A.		2 3 R	5112	L.A.		2 3 6 R
5085	S.F.		2 R	5113	S.F.	2 3 6	10 R
5086	L.A.		2 3 6 R	5114	S.F.		2 3 6 R
5086	Chicago, Ill.		2 3 R	5114	L.A.		2 3 R

5114	Portland, Ore.	2 6 R	5139	L.A.	1½ 2 3 R
5115	L.A.	2 3 R	5140	S.F.	3 R
5115	Long Beach, Calif.	3 R	5140	N.Y.	1E 2 3 R
5115	Salt Lake City, Utah	3 6 R	5140	Chicago, Ill.	3 8 R
5116	San Diego, Calif.	3 6 R	5141	Glendale, Calif.	2 3 6 10 R
5116	L.A.	2 3 6 15 R	5142	N.Y.	2 3 6 R
5117	S.F.	2 3 R	5142	Madison, Wis.	3 R
5117	Berkeley, Calif.	1½ R	5143	S.F.	2 3 R
5118	S.F.	2 3 R	5143	Sacramento, Calif.	2 3 6 R
5119	L.A.	1½ 2 3 6 R	5143	Oakland, Calif.	3 R
5120	S.F.	2 6 R	5143	Houston, Tex.	1E R
5120	Sacramento, Calif.	3 R	5144	L.A.	2 3 R
5121	S.F.	2 3 6 R	5144	Santa Ana, Calif.	3 R
5121	Richmond, Calif. (B)	2 R	5145	Chicago, Ill.	2 3 6 R
5121	Champaign, Ill.	1E R	5145	N.Y.	3 R
5122	S.F.	2 3 R	5146	L.A.	2 3 R
5122	N.Y.	1E 3 R	5146	Kansas City, Mo.	3 R
5123	S.F.	1 1½ 2 3 R	5146	Milwaukee, Wis.	3 R
5123	Oakland, Calif.	3 R	5146	Newark, N.J.	3 R
5123	Phoenix, Ariz.	2 R	5147	S.F.	2 3 6 10 R
5123	Kansas City, Mo.	3 R	5147	San Jose, Calif.	3 R
5124	S.F.	2 3 6 R	5147	Oakland, Calif.	3 R
5124	Oakland, Calif.	3 R	5148	Kansas City, Mo.	3 R
5125	S.F.	1D 2 3 R	5148	Detroit, Mich.	3 R
5125	Fresno, Calif.	2 3 R	5149	S.F.	2 3 6 R
5125	Oakland, Calif.	3 R	5149	Oakland, Calif.	3 6 R
5126	Sacramento, Calif.	3 R	5150	L.A.	2 3 R
5126	L.A.	3 R	5150	Butte, Mont.	3 10 R
5126	N.Y.	3 R	5150	Bozeman, Mont.	3 R
5126	Chicago, Ill.	3 5 R	5151	N.Y.	3 R
5127	S.F.	2 R	5153	Chicago, Ill.	2 3 R
5127	Oakland, Calif.	2 3 R	5153	San Diego, Calif.	3 R
5127	L.A.	3 R	5154	Seattle, Wash.	2 3 6 R
5127	Chicago, Ill	1E 2 3 R	5155	N.Y.	2 3 6 R
5127	South Bend, Ind.	3 R	5155	Philadelphia, Penna.	2 3 R
5127	N.Y.	3 R	5156	Brooklyn, N.Y.	2 3 R
5128	L.A.	2 3 6 15 R	5158	San Diego, Calif.	2 3 R
5128	Glendale, Calif.	2 R	5159	N.Y.	3 R
5128	Phoenix, Ariz.	2 3 R	5160	L.A.	3 R
5129	Oakland, Calif.	3 6 15 R	5160	Cleveland, Ohio	3 6 15 R
5130	Sacramento, Calif.	1 2 3 R	5160	Brooklyn, N.Y.	3 R
5130	L.A.	3 R	5161	Saint Louis, Mo.	3 R
5131	L.A.	2 3 6 R	5161	N.Y.	2 R
5132	L.A.	2 6 R	5162	L.A.	2 3 R
5132	Richmond, Calif. (B)	2 3 R	5162	Phoenix, Ariz.	2 3 R
5133	Phoenix, Ariz.	1D R	5162	Salt Lake City, Utah	3 R
5133	L.A.	1½ 2 3 R	5163	L.A.	1½ 2 3 R
5134	S.F.	2 3 R	5163	Spokane, Wash.	1½ 2 3 6 R
5134	L.A.	2 3 6 R	5164	Kansas City, Mo.	1½ 3 P
5134	Bakersfield, Calif.	3 R	5164	" " "	3 R
5135	L.A.	1D 1E 1½ 2 3 3E R	5164	Washington, D.C.	1½ R
5135	Philadelphia, Pa.	1½ 3 R	5165	Atlanta, Ga.	1½ 2 R
5136	Berkeley, Calif.	1 1D 1E 1½E 3 3E R	5167	Boston, Mass	2 3 6 15 R
5136	Sacramento, Calif.	1½ 3 R	5168	S.F.	2 3 6 15 R
5137	L.A.	1½ 2 3 R	5168	L.A.	3 R
5137	Spokane, Wash.	1½ 3 6 R	5169	S.F.	2 3 6 R
5138	San Diego, Calif.	1D 3 3D R	5169	Oakland, Calif.	2 3 R
5138	Chicago, Ill	3 R	5170	L.A.	1E 2 3 R
5138	Chicago, Ill	3 R	5170	N.Y.	2 R
5138	N.Y.	1E R	5171	San Diego, Calif.	1 3 R

5172	S.F.	2 3 10 R	5208	N.Y.	1 R
5172	Oakland, Calif.	2 R	5208	Chicago, Ill.	3 R
5173	Kansas City, Mo.	3 R	5209	S.F.	3 15 R
5173	Chicago, Ill.	3 6 R	5209	N.Y.	2 R
5173	N.Y.	1E R	5210	L.A.	3 R
5174	L.A.	1E 2 3 R	5211	Jamaica, N.Y.	3 R
5175	L.A.	2 R	5211	N.Y.	3 R
5175	Milwaukee, Wis.	3 6 15 R	5212	Milwaukee, Wis.	3 6 15 R
5176	N.Y.	3 R	5213	L.A.	3 R
5177	Buffalo, N.Y.	2 3 6 R	5213	New Haven, Conn.	3 6 R
5178	N.Y.	2 3 6 R	5214	N.Y.	1½ 2 R
5178	Fresno, Calif.	2 3 6 R	5214	Wilmington, Calif.	3 R
5179	Oakland, Calif.	2 3 6 R	5215	S.F.	2 3 P
5180	L.A.	3 R	5215	L.A.	2 3 R
5180	Pasadena, Calif.	2 R	5216	L.A.	1½ 2 3 R
5181	L.A.	2 3 6 R	5216	Brooklyn, N.Y.	3 R
5181	Spokane, Wash.	2 R	5217	Long Beach, Calif.	3 6 R
5182	L.A.	2 3 R	5218	L.A.	2 R
5183	Portland, Ore.	2 R	5218	Omaha, Neb.	2 3 6 R
5183	Seattle, Wash.	2 R	5219	N.Y.	1 2 3 R
5183	Sacramento, Calif.	3 R	5220	L.A.	2 3 6 R
5184	New Haven, Conn.	3 R	5222	Phoenix, Ariz.	3 R
5184	Atlanta, Ga.	2 3 R	5222	N.Y.	3 R
5185	L.A.	1D 1E 2 R	5222	Brooklyn, N.Y.	2 3 R
5185	Sacramento, Calif.	3 R	5223	L.A.	3 R
5186	Butte, Mont.	3 R	5223	S.F.	2 R
5186	L.A.	1D 2 3 R	5224	Chicago, Ill.	3 R
5187	L.A.	2 3 R	5225	N.Y.	3 R
5188	Detroit, Mich.	2 3 6 R	5226	N.Y.	3 R
5189	L.A.	2 3 R	5227	Salt Lake City, Utah	2 R
5189	Davenport, Iowa	3 R	5227	Atlanta, Ga.	2 3 6 R
5189	Chicago, Ill.	3 R	5228	Brooklyn, N.Y.	3 R
5189	New Brunswick, N.J.	3 R	5229	L.A.	2 3 R
5190	L.A.	6 R	5230	L.A.	2 3 R
5190	Terminal Island, Calif.	1½ 3 R	5230	Chicago, Ill	2 3 6 R
5190	Kansas City, Mo.	1½ 2 6 R	5230	" "	(B) 3 R
5190	Washington, D.C.	1½ R	5231	N.Y.	2 3 R
5191	Milwaukee, Wis.	3 R	5231	Spokane, Wash.	6 R
5192	Philadelphia, Penna.	2 3 4 6 R	5232	N.Y.	2 3 R
5194	Saint Louis, Mo.	3 6 R	5233	N.Y.	2 3 R
5194	Jefferson City, Mo.	3 R	5233	Chicago, Ill.	3 R
5194	L.A.	2 R	5234	N.Y.	3 R
5194	Santa Barbara, Calif.	2 R	5234	Brooklyn, N.Y.	3 R
5195	Seattle, Wash.	2 3 R	5235	" "	3 R
5196	Sacramento, Calif.	2 3 6 R	5235	Washington, D.C.	1½ R
5196	Oakland, Calif.	2 R	5236	Seattle, Wash.	2 3 6 15 R
5196	Salt Lake City, Utah	3 R	5236	N.Y.	2 R
5197	S.F.	2 3 6 10 R	5236	Boston, Mass.	2 R
5200	S.F.	2 R	5237	L.A.	3 R
5200	N.Y.	1E R	5237	N.Y.	2 3 R
5201	N.Y.	3 R	5237	Seattle, Wash.	2 R
5202	L.A.	2 3 6 R	5238	Washington, D.C.	3 6 R
5203	S.F.	2 3 R	5238	N.Y.	3 R
5204	Brooklyn, N.Y.	3 R	5239	N.Y.	2 3 R
5205	L.A.	2 R	5240	N.Y.	1D 1E 2 3 3E R
5205	N.Y.	3 R	5241	Brooklyn, N.Y.	2 3 R
5206	Brooklyn, N.Y.	3 R	5242	N.Y.	3 R
5207	Atlanta, Ga.	2 R	5243	Chicago, Ill.	1D 1E 3 R
5207	N.Y.	3 R	5243	L.A.	1 2 3 10 B
5208	Ozden, Utah	3 R	5243	S.F.	3 R



5245	N.Y.	2 3 4 6 R	5272	S.F.	2 R
5246	San Diego, Calif.	1 2 3 R	5273	N.Y.	3 R
5246	L.A.	2 3 6 R	5273	Chicago, Ill.	2 3 R
5247	Newark, N.J.	3 R	5273	L.A.	1E 1½ 2 R
5247	Kansas City, Mo.	3 6 R	5274	N.Y.	2 3 R
5247	Toledo, Ohio	2 R	5275	N.Y.	2 3 6 R-P
5248	S.F.	1 2 R	5275	Ogden, Utah	2 3 6 15 R
5248	Chicago, Ill.	2 R	5276	S.F.	1½ 2 3 6 R
5249	Oakland, Calif.	2 3 R	5277	N.Y.	1D 1E 2 3 R
5250	L.A.	2 3 6 15 R	5278	N.Y.	3 R
5250	Salt Lake City, Utah	3 R	5279	N.Y.	2 3 6 10 R
5251	S.F.	1½ 2 3 6 R	5279	Brooklyn, N.Y.	3 R
5251	Oakland, Calif.	1½ 2 3 6 R	5280	Milwaukee, Wis.	3 R
5252	S.F.	2 3 6 10 R	5280	West Bend, Wis.	3 6 R
5252	Philadelphia, Penna.	1 1E 3 R	5280	Chicago, Ill.	2 3 6 15 R
5252	N.Y.	1 R	5280	Aurora, Ill.	3 R
5253	S.F.	1½ 2 3 6 R	5280	N.Y.	3 R
5253	Chicago, Ill.	3 R	5281	L.A.	1½ R
5253	South Bend, Ind.	3 R	5281	Spokane, Wash.	3 6 R
5254	S.F.	1D R	5281	Philadelphia, Penna.	3 R
5254	Van Nuys, Calif.	2 3 R-K	5282	S.F.	3 R
5254	L.A.	1½ 2 3 6 R	5282	Jamaica, N.Y.	2 3 6 R
5255	L.A.	2 3 R	5282	N.Y.	2 3 R
5256	S.F.	1½ R	5282	L.A.	6 R
5256	Hollywood, Calif.	1 1D 1½ 2 3 R	5283	N.Y.	2 3 6 10 R
5257	S.F.	2 3 6 15 R	5283	L.A.	1½ 2 3 6 R
5257	Oakland, Calif.	3 R	5284	Waterbury, Conn.	3 6 R
5257	N.Y.	3 R	5284	" "	2 3 6 P
5257	Saint Louis, Mo.	3 P	5284	New Haven, Conn.	3 R
5258	S.F.	1 1D 1E 2 3 10 R	5284	Boston, Mass.	2 3 R
5258	Phoenix, Ariz.	1 2 R	5284	N.Y.	3 R
5259	N.Y.	3 R	5284	S.F.	3 5 6 15 R
5259	Brooklyn, N.Y.	3 6 R	5285	N.Y.	3 6 R
5260	N.Y.	3 R	5285	Brooklyn, N.Y.	2 3 6 10 R
5260	S.F.	3 5 R	5285	Philadelphia, Pa.	3 R
5261	N.Y.	2 3 R-P-B	5286	New Haven, Conn.	3 R
5262	N.Y.	2 3 R	5286	Sacramento, Calif.	2 3 6 R
5262	L.A.	2 3 R	5286	S.F.	3 R
5262	S.F.	3 R	5287	N.Y.	2 3 R
5262	Sacramento, Calif.	6 R	5287	Chicago, Ill.	2 3 R
5262	San Jose, Calif.	2 3 6 R	5287	" "	3 P
5262	Philadelphia, Pa.	2 3 R	5288	L.A.	1½ R
5263	N.Y.	3 R	5288	Chicago, Ill.	1E 1½ R
5263	Philadelphia, Penna.	2 R	5289	S.F.	2 3 P
5264	N.Y.	3 6 R	5290	S.F.	15 R
5265	N.Y.	2 3 15 R	5290	N.Y.	2 3 R
5266	L.A.	1 1E 2 3 R	5290	Chicago, Ill.	2 2D 3 6 15 R
5266	Santa Ana, Calif.	3 R	5290	Phoenix, Ariz.	2 3 R
5267	Philadelphia, Penna.	3 R	5290	Santa Monica, Calif.	3 R
5267	N.Y.	2 3 6 15 R	5291	N.Y.	2 3 R
5267	Chicago, Ill.	3 R	5291	S.F.	3 R
5268	N.Y.	3 R	5292	S.F.	2 3 R
5268	Chicago, Ill.	2 3 6 15 R	5292	L.A.	2 3 R
5269	South Saint Paul, Minn.	3 R	5293	N.Y.	3 R
5269	Saint Paul, Minn.	3 R	5294	N.Y.	2 3 R
5269	Portland, Ore.	2 3 10 R	5294	Hollywood, Calif.	2 3 R
5270	N.Y.	2 3 6 15 R	5295	L.A.	1D R
5271	N.Y.	2 3 R	5295	Branford, Conn.	3 R
5271	N.Y.	3 P	5295	N.Y.	1D 1E 1½ 1½E 2 3 R
5272	N.Y.	2 3 R	5296	N.Y.	1½ 2 3 R

5296	Kansas City, Mo.		3 R	5322	Chicago, Ill. (B)		6 R
5296	Fort Atkinson, Wis.		1½ 3 R	5322	S.F.		3 R
5296	Phoenix, Ariz.		3 R	5323	Chicago, Ill.	2 3 15 R	
5297	N.Y.	1D 1E	2 2D 3 R	5323	" "	(B)	6 R
5297	N.Y.		1E P	5324	Chicago, Ill.		2 3 R
5298	N.Y.		2 3 6 R	5324	Atlanta, Ga.		2 3 6 R
5298	Newark, N.J.		3 6 R	5324	Kansas City, Mo.		3 6 R
5298	L.A.		3 5 R	5324	N.Y.		3 R
5299	N.Y.		2 3 6 R	5325	Chicago, Ill.		2 3 6 R
5299	Schenectady, N.Y.		3 6 R	5326	L.A.		2 3 R
5300	S.F.		2 3 R	5326	Chicago, Ill.	1½ 2 3 R	
5300	Oakland, Calif.		3 R	5327	L.A.	1D 2 3 R	
5300	Sacramento, Calif.		3 6 R	5327	Chicago, Ill.	1D 2 P	
5300	San Mateo, Calif.		3 R	5327	" "	1 1D 1E 2 3 R	
5301	Chicago, Ill.	1½	2 3 6 R	5327	Newark, N.J.		3 R
5302	" "		2 3 6 R	5328	Chicago, Ill.	2 3 10 R	
5302	" "	(B)	2 3 6 R	5328	L.A.		3 R
5303	S.F.		1D P-R	5328	San Diego, Calif.		3 R
5303	San Jose, Calif.		3 R	5329	Chicago, Ill.		3 R
5303	Butte, Mont.		3 R	5329	N.Y.	2 3 6 15 R	
5303	N.Y.		1E 3 R	5330	Chicago, Ill.		3 R
5304	S.F.		2 3 6 R	5330	N.Y.		2 3 R
5304	Alameda, Calif.		3 R	5331	Buffalo, N.Y.	1½ 3 R	
5304	L.A.		2 3 R	5331	Washington, D.C.	1½ R	
5305	L.A.		3 R	5331	Philadelphia, Penna.		2 3 R
5305	Tacoma, Wash.		2 3 6 R	5331	Philadelphia, Pa.	1½ 2 3 R	
5306	N.Y.		2 3 R	5331	Kansas City, Mo.		3 B
5306	Elmsford, N.Y.		3 R	5332	N.Y.		2 3 R
5306	Atlanta, Ga.		2 3 R	5333	Chicago, Ill.		3 R
5307	N.Y.		1 2 3 6 R	5333	L.A.	2 3 4 6 R	
5308	N.Y.		2 3 6 15 R	5333	Newark, N.Y.		6 R
5308	Rochester, N.Y.		3 R	5333	S.F.		3 6 R
5309	Portland, Ore.		3 6 R	5334	L.A.		2 3 R
5309	L.A.		1E 2 R	5334	N.Y.		1E 3 R
5310	L.A.		2 R	5334	Chicago, Ill.		2 3 R
5311	N.Y.		2 3 R	5335	" "		2 3 R
5311	Rochester, N.Y.		1D R	5336	N.Y.	1½ 2 3 R	
5312	Philadelphia, Penna.		2 3 R	5336	Brooklyn, N.Y.		3 R
5312	Philadelphia, Pa.		3 R	5336	S.F.		3 R
5313	N.Y.		2 3 4 6 R	5337	Hartford, Conn.		3 R
5314	N.Y.		2 3 4 5 R	5337	New Britain, Conn.		3 R
5314	Chicago, Ill.		3 R	5337	N.Y.	2 3 6 R	
5315	N.Y.		2 3 R	5337	N.Y.	2 3 6 15 P	
5315	Newark, N.J.		3 6 R	5338	Buffalo, N.Y.	2 3 6 6E R	
5315	Boston, Mass.		2 3 R	5338	S.F.		2 R
5316	Sacramento, Calif.		3 R	5338	N.Y.		2 3 R
5316	S.F.		3 R	5338	Brooklyn, N.Y.		3 R
5317	Bridgeport, Conn.		3 R	5338	Boston, Mass.		2 R
5317	N.Y.		2 3 R	5339	S.F.		2 R
5318	Philadelphia, Pa.		2 3 R	5339	Oakland, Calif.		3 6 R
5319	N.Y.		2 R	5340	L.A.		3 R
5319	Bridgeport, Conn.		3 R	5340	Phoenix, Ariz.		2 R
5319	New Haven, Conn.		3 R	5340	Brooklyn, N.Y.		3 R
5319	Newark, N.J.		6 R	5340	N.Y.	2 3 6 R	
5319	L.A.		5 R	5340	Salt Lake City, Utah		3 6 R
5320	Chicago, Ill.		2 3 6 15 R	5341	S.F.		2 3 R
5320	Milwaukee, Wis.		2 3 6 15 R	5341	Berkeley, Calif.		3 R
5321	Chicago, Ill.		3 R	5342	N.Y.		2 3 R
5321	Ogden, Utah		3 6 R	5342	Philadelphia, Penna.		3 R
5321	Seattle, Wash.		1½ R	5342	Philadelphia, Pa.		2 3 R
5322	Chicago, Ill.		2 3 6 R	5342	S.F.		3 R

5342	Bakersfield, Calif.	3 R	5365	Brooklyn, N.Y.	3 R
5343	N.Y.	3 R	5366	Salt Lake City, Utah	2 3 6 R
5343	L.A.	2 3 15 R	5366	Sacramento, Calif.	1½ 3 R
5344	N.Y.	2 3 6 10 R	5367	L.A.	2 3 6 15 R
5345	Redlands, Calif.	3 6 R	5368	Sacramento, Calif.	3 6 R
5345	L.A.	2 3 6 R	5368	Oakland, Calif.	2 3 6 R
5346	Philadelphia, Penna.	2 3 6 R	5368	N.Y.	3 R
5347	Topeka, Kans.	1E R	5369	N.Y.	3 6 R
5347	Atlanta, Ga.	2 3 R	5369	Brooklyn, N.Y.	1½ 2 3 R
5347	Philadelphia, Penna.	1E R	5369	Portland, Ore.	6 R
5348	Philadelphia, Pa.	2 3 R	5370	L.A.	1½ 2 3 6 R
5348	Madison, Wis.	3 R	5371	Fort Atkinson, Wis.	1D R
5348	Milwaukee, Wis.	3 R	5371	Chicago, Ill.	1E 2 3 R
5348	N.Y.	3 R	5372	L.A.	2 3 6 R
5349	Philadelphia, Penna.	3 R	5372	San Jose, Calif.	3 R
5349	N.Y.	1 1D 1E 2 3 R	5373	Philadelphia, Penna.	1D 1E R
5349	S.F.	3 R	5373	Philadelphia, Pa.	1½ R
5350	Kansas City, Mo.	2 3 R	5373	N.Y.	1D 3 R
5351	Chicago, Ill.	2 3 6 R	5373	Rutland, Vt. (B)	1E R
5351	Santa Monica, Calif.	3 R	5374	N.Y.	2 3 R
5351	S.F.	3 R	5375	N.Y.	1D 1½ R
5351	Oakland, Calif.	3 R	5375	Chicago, Ill.	1E 1½ 2 3 R
5352	Milwaukee, Wis.	2 3 6 R	5376	Waterbury, Conn.	1 1D 1½ 3 R
5352	Chicago, Ill.	2 3 R	5376	N.Y.	1E 1½ 2 3 R
5353	New Haven, Conn.	1D P	5376	N.Y.	1E P
5353	N.Y.	1D 1E 2 3 10 R	5376	Chicago, Ill.	1E P
5353	L.A.	2 3 R-B	5376	" "	1E 1½ R
5354	N.Y.	2 R	5376	" " (B)	3 P
5354	L.A.	2 3 6 R-P	5376	Joliet, Ill.	3 R
5354	L.A.	2 3 10 B	5376	Kansas City, Kan.	3 R
5355	N.Y.	2 3 R	5377	N.Y.	1½ 2 3 R
5355	Elmsford, N.Y.	3 R	5378	N.Y.	2 3 6 R
5355	L.A.	3 6 R	5378	Elmsford, N.Y.	3 R
5355	Chicago, Ill.	3 R	5379	L.A.	1 1½ 2 3 R
5356	N.Y.	2 3 10 R	5379	S.F.	3 R
5356	Chicago, Ill.	2 R	5379	Oakland, Calif.	2 3 R
5356	Phoenix, Ariz.	3 R	5379	N.Y.	1D R
5357	N.Y.	1D 3 R	5380	Chicago, Ill.	2 3 15 R
5357	Chicago, Ill.	1 2 3 R	5380	Fort Wayne, Ind.	3 R
5358	" "	2 3 R	5381	Chicago, Ill.	2 R
5358	Minneapolis, Minn.	3 R	5381	N.Y.	2 3 6 R
5358	Bakersfield, Calif.	3 R	5381	S.F.	2 3 6 R
5359	N.Y.	3 R	5381	Sacramento, Calif.	3 R
5360	Chicago, Ill.	3 R	5381	San Jose, Calif.	6 R
5360	N.Y.	1 1E 2 3 10 R	5381	L.A.	2 3 R
5360	Brooklyn, N.Y.	1 1E 3 R	5382	Seattle, Wash.	2 R
5360	Long Island City, N.Y.	1 3 R	5382	L.A.	2 3 6 15 R
5361	N.Y.	2 3 6 R	5382	San Bernardino, Calif.	3 R
5361	Montclair, N.J.	2 3 6 R	5383	Baltimore, Md.	2 R
5362	Milwaukee, Wis.	2 3 6 R	5383	L.A.	3 R
5362	Chicago, Ill.	1½ 2 R	5384	N.Y.	1D 1E 2 2E 3 6 R
5362	Philadelphia, Penna.	3 6 R	5384	L.A.	3 R
5362	Philadelphia, Pa.	3 R	5385	L.A.	2 3 R
5362	Brooklyn, N.Y.	1½ 2 3 R	5385	Pasadena, Calif.	2 3 R
5363	L.A.	1D 1E 2 3 R	5385	Kansas City, Mo.	3 6 R
5364	S.F.	2 R	5385	Brooklyn, N.Y.	3 R
5364	L.A.	2 3 6 15 R	5385	Atlanta, Ga.	3 R
5364	Seattle, Wash.	3 R	5385	S.F.	3 R
5365	Kansas City, Mo.	1 1E 1½ 3 R	5386	Chicago, Ill.	3 R
5365	Kansas City, Kan.	3 R	5386	Sacramento, Calif.	3 R

5386	S.F.		2 3 6 R	5408	Chicago, Ill.		2 3 R
5386	L.A.		3 R	5408	Philadelphia, Penna.		3 R
5387	Chicago, Ill.		2 3 6 15 R	5408	Findlay, Ohio		3 R
5387	" "		2 3 P	5409	Chicago, Ill.		2 R
5387	Kansas City, Mo.		3 R	5409	Kenosha, Wisc.		1 2 3 R
5388	Chicago, Ill.		1 1D 2 3 R	5409	Philadelphia, Penna.	1E 2 2E 3 R	
5388	Saint Louis, Mo.		3 R	5409	N.Y.	1E 1½ 3 R	
5388	" " "		1½ P	5410	Sacramento, Calif.		3 R
5389	Chicago, Ill.		2 3 R	5410	S.F.		3 R
5389	Milwaukee, Wis.		3 R	5410	San Jose, Calif.		1E R
5389	N.Y.		1 3 R	5411	Newark, N.J.		1½ R
5390	Wheaton, Ill.		3 6 R	5411	Buffalo, N.Y.		1½E R
5390	Chicago, Ill.		2 3 R	5411	Chicago, Ill.		1E R
5390	" " (B)		2 3 6 R	5411	N.Y.		3 R
5390	Rochester, N.Y.		3 6 R	5412	N.Y.		1E 3 R
5391	Milwaukee, Wis.		2 3 6 R	5412	Chicago, Ill.		1E 3 R
5391	Fort Wayne, Ind.		3 R	5412	S.F.		3 R
5392	Chicago, Ill.		2 3 6 15 R	5413	Brooklyn, N.Y.		3 R
5392	L.A.		2 3 6 15 R	5413	Kansas City, Mo.		1½ R
5392	Santa Monica, Calif.		2 3 R	5414	Philadelphia, Penna.		1½ R
5393	Newark, N.J.		3D 6 R	5414	Philadelphia, Pa.		1 1D R
5393	Chicago, Ill.		2 3 R	5414	Long Island City, N.Y.		3 6 R
5394	" "		2 3 R	5414	Kansas City, Mo.		3 R
5395	Seattle, Wash.		2 R	5415	" " "		3 P
5395	Phoenix, Ariz.		2 R	5416	Philadelphia, Penna.	1½ 1½D 2 3 R	
5395	San Diego, Calif.		3 R	5416	Philadelphia, Pa.		3 R
5396	N.Y.		3 6 R	5417	N.Y.		2 3 R
5396	Jamaica, N.Y.		3 R	5417	S.F.		3 R
5396	Santa Monica, Calif.		2 3 R	5418	Santa Monica, Calif.		3 R
5396	S.F.		3 R	5419	Philadelphia, Penna.		3 R
5397	Philadelphia, Pa.		1D P	5419	Philadelphia, Pa.		3 R
5397	Philadelphia, Penna.	1D 1E 1½ 3 P		5419	Buffalo, N.Y.		3 R
5398	L.A.		1D 1E 3 R	5419	N.Y.		3 R
5399	L.A.		2 3 6 R	5420	Topeka, Kans.		6 R
5399	Chicago, Ill.		1D R	5420	Jefferson City, Mo.		3 R
5400	Kansas City, Mo.		3 5 15 R	5420	Kansas City, Mo.		1½ 2 3 6 R
5400	Chicago, Ill.		2 3 5 R	5420	Detroit, Mich.		3 6 R
5401	N.Y.		1D 1E R	5421	N.Y.		2 3 6 15 R
5401	Chicago, Ill.		3 R	5421	Brooklyn, N.Y.		3 R
5402	Buffalo, N.Y.		3 6 R	5421	Chicago, Ill.	(B)	3 R
5402	Newark, N.J.		3 R-P	5421	Chicago, Ill.		3 R
5402	Fresno, Calif.		3 R	5422	" "		2 3 10 R
5403	L.A.		2 3 R	5423	" "		2 3 R
5403	S.F.		2 3 6 10 R	5424	S.F.		2 3 6 R
5404	Newark, N.J.		3 R	5424	Sacramento, Calif.		3 6 R
5404	Montclair, N.J.		2 3 6 R	5425	Newark, N.J.		3 6 R
5404	N.Y.		2 3 R	5425	N.Y.		2 3 R
5404	Philadelphia, Penna.		1D 1E 6 R	5425	South Saint Paul, Minn.		3 R
5405	S.F.		1D 1E 2 3 R	5426	Chicago, Ill.		2 3 R
5405	Oakland, Calif.		1 2 3 R	5426	N.Y.		15 R
5405	Philadelphia, Penn.		3 R	5427	L.A.		2 3 R
5405	Philadelphia, Penna.		1E 3 R	5427	Portland, Ore.		3 R
5406	Philadelphia, Penn.		1D 2 3 R	5428	N.Y.		2 3 6 15 R
5406	Philadelphia, Penna.		3 R	5429	Kenosha, Wisc.		3 R
5406	Boston, Mass.		1E R	5429	Champaign, Ill.		1E R
5406	Kansas City, Mo.		3 R	5429	Chicago, Ill.		2 3 R
5407	Buffalo, N.Y.		2 3 6 R	5429	N.Y.		3 R
5407	Detroit, Mich.		3 R				

5430	N.Y.		2 3 R	5459	Chicago, Ill.		3 R
5430	Chicago, Ill.		2 3 6 10 R	5459	Long Beach, Calif.		3 R
5431	Buffalo, N.Y.		2 3 6 R	5459	Ogden, Utah		5 R
5432	Chicago, Ill.		2 3 R	5460	Chicago, Ill		2 3 R
5432	" "	(B)	3 R	5460	" "	(B)	3 R
5433	N.Y.		2 3 6 R	5460	Toledo, Ohio		2 3 R
5434	Chicago, Ill.	(B)	2 3 R	5460	N.Y.		3 R
5434	" "		3 R	5461	Buffalo, N.Y.		3 R
5434	N.Y.		3 R	5461	N.Y.	2 3 6 15 R	
5434	Lawrence, Mass	(B)	3 R	5462	Portland, Ore.		3 R
5435	Newark, N.J.		3 R	5462	Chicago, Ill.	1 1/2	2 3 R
5435	N.Y.		2 3 6 R	5462	Philadelphia, Penna.		3 R
5436	Newark, N.J.		3 6 R	5463	L.A.		3 R
5436	N.Y.		3 6 15 R	5463	Chicago, Ill.	1 1/2 1 1/2 D	2 3 6 R
5436	Chicago, Ill.		3 15 R	5463	" "	(B)	3 R
5437	West Bend, Wis.		3 R	5463	Kansas City, Mo.		3 P-R
5437	Madison, Wis.		3 R	5464	Seattle, Wash.	2 3 6 R	
5437	Chicago, Ill.	2 3 6 15 R		5464	San Bernardino, Calif.	2 3 R	
5437	Atlanta, Ga.		3 R	5464	Philadelphia, Penna.		3 R
5438	Chicago, Ill.		2 R	5465	Camden, N.J.		3 R
5439	N.Y.		3 R	5465	New Haven, Conn.		3 R
5439	Seattle, Wash.	2 3 6 R		5465	N.Y.	1D R	
5440	N.Y.	2 3 6 R		5466	S.F.	2 3 6 R	
5441	N.Y.	2 3 6 R		5466	Sacramento, Calif.	2 3 R	
5441	Philadelphia, Pa.	3 6 R		5466	San Diego, Calif.	3 R	
5442	N.Y.	2 3 6 15 R		5467	Newark, N.J.	3 6 R	
5442	Summit, N.J.	2 3 6 15 R		5467	N.Y.	2 3 6 R	
5442	Rochester, N.Y.	3 6 15 R		5468	Stockton, Calif.	2 R	
5443	N.Y.	3 R		5468	Sacramento, Calif.	3 R	
5443	Jersey City, N.J.	3 R		5468	S.F.	2 R	
5443	Summit, N.J.	2 3 15 R		5468	Rochester, N.Y.	3 R	
5444	Chicago, Ill.	2 3 6 15 R		5468	Chicago, Ill.	3 5 R	
5444	S.F.	3 R		5468	" "	(B)	3 R
5445	N.Y.	1E 2 3 6 8 R		5469	S.F.	2 3 6 R	
5445	Elmsford, N.Y.	3 R		5470	Newark, N.J.	6 R	
5446	N.Y.	2 3 6 15 R		5470	L.A.	2 3 10 R	
5446	Chicago, Ill.	1E 2 3 R		5470	Long Beach, Calif.	3 R	
5447	N.Y.	3 6 15 R		5470	N.Y.	3 6 R	
5447	Chicago, Ill.	3 R		5471	Seattle, Wash.	1 2 3 R	
5447	Buffalo, N.Y.	3 6 R		5471	S.F.	3 R	
5448	Chicago, Ill.	2 3 6 R		5471	N.Y.	1D 2 R	
5448	N.Y.	3 6 R-P		5472	Chicago, Ill.	2 3 R	
5448	L.A.	3 R		5472	Boston, Mass.	1E R	
5449	Chicago, Ill.	2 3 6 15 R		5472	Oakland, Calif.	3 R	
5449	East Stroudsburg, Pa.	(N) 1D R		5473	N.Y.	3 R	
5449	Philadelphia, Penna.	1E R		5473	Philadelphia, Pa.	2 3 R	
5450	Portland, Ore.	2 3 6 R		5474	Indianapolis, Ind. P.181		
5451	S.F.	1 2 3 R				1D 1 1/2 3 R	
5451	Sacramento, Calif.	3 6 R		5474	Chicago, Ill.	1E 3 R	
5452	N.Y.	2 3 R		5475	N.Y.	1D 1E 2D 3 3D R	
5452	Bridgeport, Conn.	1 1/2 3 6 R		5476	N.Y.	2 3 6 R	
5452	Philadelphia, Penna.	2 R		5476	Chicago, Ill.	2 3 6 R	
5453	Chicago, Ill.	2 3 R		5476	Rochester, N.Y.	2 3 R	
5454	Seattle, Wash.	2 3 R		5477	N.Y.	2 3 R	
5454	L.A.	3 R		5477	Kansas City, Mo.	3 R	
5454	Glendale, Calif.	3 R		5478	Newark, N.J.	3 R	
5455	L.A.	2 3 R		5478	N.Y.	2 3 6 10 R	
5456	L.A.	1 1 1/2 3 6 R		5478	Chicago, Ill.	3 R	
5457	S.F.	1D 1E 1 1/2 2 3 R		5478	" "	(B) 3 R	
5458	N.Y.	2 3 6 15 R		5479	San Diego, Calif.	3 R	
5458	N.Y.	3 6 15 P		5480	L.A.	2 3 R	
5459	Sacramento, Calif.	1 R		5481	Santa Barbara, Calif.	2 3 R	
				5481	Oakland, Calif.	3 R	

5482	Spokane, Wash.	1D 1E 2 3 R	5612	N.Y.	2 3 6 15 R
5483	N.Y.	2 3 R	5612	Newark, N.J.	3 R
5484	N.Y.	1½ 2 3 6 R	5612	New Haven, Conn.	3 R
5484	Kansas City, Mo.	3 6 R	5613	L.A.	3 6 15 R
5484	Brooklyn, N.Y.	3 R	5613	Chicago, Ill.	1 1E 2 3 6 8 R
5485	N.Y.	3 R	5613	S.F.	3 R
5485	Montclair, N.J.	3 R	5614	Jersey City, N.J.	2 3 R
5486	N.Y.	2 3 6 10 R	5614	Kansas City, Mo.	3 R
5486	Brooklyn, N.Y.	3 R	5614	Omaha, Neb.	3 R
5487	Philadelphia, Penna.	2 R	5615	New Haven, Conn.	2 3 R
5487	Philadelphia, Pa.	3 R	5615	Buffalo, N.Y.	2 3 R
5487	Buffalo, N.Y.	3 R	5616	Chicago, Ill.	3 R
5488	N.Y.	3 R	5616	N.Y.	2 3 6 R
5488	Jersey City, N.J.	2 R	5616	Sacramento, Calif.	3 8 R
5488	Champaign, Ill.	1E R	5617	S.F.	2 3 6 10 R
5488	Chicago, Ill.	1 2 3 R	5618	S.F.	2 3 6 R
5489	Waterbury, Conn.	3 R	5618	Oakland, Calif.	2 3 R
5489	New Haven, Conn.	3 R	5619	N.Y.	2 3 6 15 R
5489	Kansas City, Mo.	3 R	5619	Lawrence, Mass_ (B)	2 3 R
5490	New Haven, Conn.	2 3 R	5619	Chicago, Ill.	3 15 R
5490	N.Y.	2 3 R	5620	" "	1 R
5490	Chicago, Ill. (B)	3 8 R	5620	Excelsior Springs, Mo.	1D R
5491	L.A.	3 R	5620	N.Y.	1½ 2 3 6 R
5491	S.F.	3 6 R	5620	Boston, Mass	3 R
5492	N.Y.	2 3 R	5620	Philadelphia, Pa.	3 R
5493	L.A.	1 1D 2 3 6 R	5622	S.F.	3 R
5493	S.F.	2 R	5622	San Jose, Calif.	3 6 R
5493	Saint Paul, Minn.	1E 2 3 6 R	5623	Chicago, Ill.	2 3 6 15 R
5493	Minneapolis, Minn.	1E R	5623	Kansas City, Mo.	3 6 R
5494	N.Y.	2 3 6 R	5623	Milwaukee, Wis.	3 R
5494	Chicago, Ill. (B)	3 R	5624	L.A.	2 3 R
5495	Hollywood, Calif.	2 R	5624	Chicago, Ill.	3 R
5495	Hollywood Sta., L.A.	2 R	5625	San Jose, Calif.	3 R
5496	Chicago, Ill.	1 2 3 6 R	5625	S.F.	3 R
5497	Sacramento, Calif	1D 2 3 10 R	5625	L.A.	3 R
5497	Oakland, Calif.	3 R	5626	L.A.	2 3 R
5497	S.F.	3 R	5626	Sacramento, Calif.	3 R
5497	Berkeley, Calif.	3 R	5626	S.F.	2 3 R
5497	San Diego, Calif.	3 R	5626	Kansas City, Mo.	3 R
5498	Spokane, Wash.	3 R	5627	Newark, N.J.	2 3 6 R
5498	S.F.	2 3 6 10 R	5627	Boston, Mass.	2 3 B
5499	N.Y.	2 3 6 R	5628	Kansas City, Mo.	2 3 15 R
5600	Chicago, Ill.	2 3 R	5628	N.Y.	3 R
5601	" "	2 3 6 15 R	5629	N.Y.	2 3 6 15 R
5601	N.Y.	2 3 R	5629	Kansas City, Mo.	3 R
5602	Salt Lake City, Utah	2 3 R	5629	Milwaukee, Wis.	3 R
5603	L.A.	1D 2 3 R	5630	Topeka, Kans.	3 R
5604	Chicago, Ill.	2 3 6 R	5630	Kansas City, Mo.	1½ 3 B
5605	L.A.	2 3 6 15 R	5630	" " "	3 6 R
5605	S.F.	2 3 6 15 R	5631	L.A.	1D 2 3 R
5606	L.A.	2 3 R	5632	Hollywood, Calif.	1½ R
5606	S.F.	1 2 3 R	5632	Chicago, Ill.	2 3 R
5606	San Jose, Calif.	1E 3 R	5633	Kansas City, Mo.	3 R
5606	Chicago, Ill.	2 3 R	5633	N.Y.	2 3 R
5607	" "	2 3 6 R	5633	Philadelphia, Penna.	2 3 R
5607	L.A.	2 3 6 R	5633	L.A.	3 R
5607	Milwaukee, Wis.	2 R	5634	Beverly Hills, Calif.	1D R
5608	N.Y.	2 3 6 R	5634	L.A.	1E 2 3 6 R
5609	Chicago, Ill.	3 R	5634	San Jose, Calif.	3 R
5610	Seattle, Wash.	3 6 R	5634	S.F.	3 R
5610	Chicago, Ill.	3 R	5634	Philadelphia, Penna.	1E R
5611	L.A.	2 3 R	5634	Chicago, Ill.	3 R
		- - -			2 3 6 R

5635	Chicago, Ill.		3 R	5659	Kansas City, Mo.		3 R-P
5635	" "	(B)	3 R	5660	Saint Paul, Minn.	1½	2 3 R
5636	Chicago, Ill.		2 R	5660	Philadelphia, Penna.		3 6 R
5636	Indianapolis, Ind. P.181	1E	3 R	5661	Chicago, Ill.	1½	2 3 6 R
5636	L.A.		2 R	5662	S.F.		2 R
5637	L.A.		3 R	5662	Sacramento, Calif.		2 3 R
5637	Seattle, Wash.		2 R	5662	L.A.		8 R
5637	Tacoma, Wash.		3 R	5663	Salt Lake City, Utah	2 3	6 R
5638	L.A.		2 3 R	5663	Ogden, Utah		3 R
5639	Santa Ana, Calif.		1 3 R	5663	L.A.		2 R
5639	Saint Louis, Mo.	1E	3 R	5663	Long Beach, Calif.		3 R
5640	S.F.		2 3 R	5664	S.F.		2 3 R
5640	Long Beach, Calif.	2 3	4 R	5664	Berkeley, Calif.	1½	3 R
5640	L.A.		3 R	5664	L.A.	1½	2 3 6 R
5641	L.A.	1½	2 3 6 R	5665	S.F.	2 3	4 6 R
5642	Beverly Hills, Calif.	1D	R	5665	Chicago, Ill.		3 R
5642	L.A.		3 R	5666	L.A.	2 3 6	15 R
5642	N.Y.	1E	2 3 10 R	5666	S.F.	2 3	6 R
5642	Long Island City, N.Y.		3 R	5666	Chicago, Ill.		3 R
5642	Boston, Mass.		3 R	5667	S.F.	1E	2 3 R
5643	Chicago, Ill.		2 3 R	5668	S.F.		2 3 R
5643	L.A.		3 R	5668	L.A.		2 3 4 R
5644	N.Y.	1E	2 3 5 R	5670	Oakland, Calif.	3 4	6 R
5644	Summit, N.J.		3 10 R	5670	Sacramento, Calif.		3 R
5645	L.A.	2 3	6 15 R	5670	S.F.		3 R
5645	S.F.		2 3 6 R	5671	N.Y.	2 3	6 R
5645	Seattle, Wash.		3 R	5672	Chicago, Ill.		2 3 R
5646	Salt Lake City, Utah	2 3	6 R	5672	Atlanta, Ga.		2 3 R
5647	Atlanta, Ga.		2 3 R	5672	Fresno, Calif.		2 3 R
5648	N.Y.		2 3 R	5672	Seattle, Wash.		2 3 R
5649	S.F.		2 R	5673	Long Beach, Calif.		3 R
5649	Philadelphia, Penna.		2 3 R	5673	Seattle, Wash.	2 3	R
5649	Columbus, Ohio		3 6 R	5673	S.F.		3 R
5649	Milwaukee, Wis.		3 R	5674	Kansas City, Mo.	1 1D	1E R
5650	" "		2 3 6 R	5674	San Bernardino, Calif.		3 R
5650	Kenosha, Wisc.		3 R	5674	S.F.	1½	3 R
5650	Chicago, Ill.		3 R	5675	N.Y.	1D	3 R
5650	" "	(B)	8 R	5675	S.F.		2 3 R
5651	Stockton, Calif.		2 3 R	5675	L.A.		2 3 R
5651	Richmond, Calif.	(B)	2 R	5676	S.F.		2 3 R
5651	L.A.		8 R	5677	Chicago, Ill.		2 3 R
5652	Chicago, Ill.		3 R	5677	Topeka, Kans.		3 R
5652	Fort Atkinson, Wis.		3 R	5677	Kansas City, Mo.	1½	R
5652	Brooklyn, N.Y.		3 R	5678	Toledo, Ohio		3 R
5653	Minneapolis, Minn.		3 R	5678	Chicago, Ill.		3 R
5653	Chicago, Ill.		3 R	5678	Aurora, Ill.	2 3	6 R
5653	Atlanta, Ga.		3 R	5679	" "		3 6 R
5654	Boston, Mass	1 1D	1E R	5679	Chicago, Ill.	1 1D	1E 2 3 6 R
5654	Chicago, Ill.	1E	3 R	5680	Kansas City, Mo.		3 R
5654	Excelsior Springs, Mo.		3 R	5680	San Jose, Calif.	1E	R
5655	Chicago, Ill.		2 3 5 R	5681	L.A.		2 0
5655	Newark, N.Y.		3 R	5681	L.A.	1½	2 3 6 R
5655	Elmsford, N.Y.		3 R	5682	Hollywood, Calif.	1½	2 3 6 R
5655	L.A.		3 R	5682	Chicago, Ill.		3 R
5656	L.A.		2 3 6 R	5683	L.A.	2 3 6	15 R
5656	Phoenix, Ariz.		2 3 R	5683	Phoenix, Ariz.		3 R
5657	S.F.		2 3 4 R	5684	L.A.		2 3 R
5657	San Jose, Calif.		3 6 R	5685	N.Y.		3 R
5657	Sacramento, Calif.		3 R	5685	Chicago, Ill.		2 3 R
5657	Oakland, Calif.		3 R	5685	Philadelphia, Penna.		3 R
5657	L.A.		3 R	5686	S.F.		6 R
5658	Chicago, Ill.		3 R	5686	Chicago, Ill.	2 3 6	9 R
						10 1E	2 3 R

5688	Chicago, Ill.	2 3 R	5716	Philadelphia, Penn.	3 R
5688	Champaign, Ill.	1E R	5717	N.Y.	1D 1E 2 R
5689	N.Y.	2 3 6 15 R	5717	Brooklyn, N.Y.	1½ 2 3 R
5689	Kansas City, Mo.	3 R	5717	Jamaica, N.Y.	1E 1½ 1½E 3E R
5689	Chicago, Ill.	3 6 8 R	5718	Chicago, Ill.	2 3 6 R
5690	S.F.	6 R	5719	" "	2 3 R
5690	N.Y.	1 1E 3 R	5719	" " (B)	5 R
5690	Buffalo, N.Y.	3 R	5719	N.Y.	2 3 6 R
5690	Columbus, Ohio	3 R	5720	Milwaukee, Wis.	2 3 R
5691	Chicago, Ill.	2 3 R	5720	Chicago, Ill.	2 3 R
5691	Atlanta, Ga.	3 R	5720	Saint Paul, Minn.	3 R
5692	Kansas City, Mo.	1 1D 1E 2 3 9 R	5720	N.Y.	1E 3 R
5692	N.Y.	3 R	5721	L.A.	2 3 6 R
5693	L.A.	3 15 R	5722	Philadelphia, Penna.	2 3 R
5693	Jacksonville, Fla.	3 R	5722	N.Y.	3 R
5694	Sacramento, Calif.	3 R	5722	Rochester, N.Y.	1E R
5694	S.F.	2 3 R	5723	Chicago, Ill.	3 8 R
5694	Oakland, Calif.	2 3 R	5724	Brooklyn, N.Y.	3 R
5694	Chicago, Ill.	3 R	5724	N.Y.	3 6 15 R
5694	Fort Atkinson, Wis.	3 R	5724	Philadelphia, Pa.	3 R
5695	New Haven, Conn.	2 3 R	5725	S.F.	3 R
5696	Chicago, Ill.	2 3 R	5725	Philadelphia, Pa.	1D R
5696	Madison, Wis.	3 R	5725	Philadelphia, Penna.	1E 2 3 R-P
5697	Chicago, Ill.	2 3 6 15 R	5725	" "	3 B
5698	Jersey City, N.J.	3 6 15 R	5726	L.A.	3 R
5698	N.Y.	2 3 R	5726	San Jose, Calif.	3 R
5698	N.Y.	3 6 15 P	5727	N.Y.	2 3 6 15 R
5698	N.Y.	2 G	5727	N.Y.	3 P
5698	Chicago, Ill.	2 3 R	5727	Atlanta, Ga.	3 R
5699	N.Y.	2 3 R	5727	L.A.	3 R
5699	Boston, Mass.	3 B	5728	N.Y.	2 3 R
5700	N.Y.	2 3 R	5729	N.Y.	2 3 6 R
5701	L.A.	2 3 R	5730	N.Y.	2 3 6 R
5701	Chicago, Ill.	3 R	5730	L.A.	2 3 R
5701	Kansas City, Mo.	3 P	5730	Kansas City, Kan.	1E 1½E 3 R
5701	Jersey City, N.J.	6 R	5731	L.A.	2 3 6 R
5701	N.Y.	1½ R	5731	Oakland, Calif.	3 R
5702	Milwaukee, Wis.	2 3 6 R	5731	S.F.	3 6 R
5702	Chicago, Ill.	2 3 6 R	5732	Chicago, Ill.	2 3 6 R
5702	Fort Wayne, Ind.	3 R	5733	Long Beach, Calif.	3 R
5703	Chicago, Ill.	2 3 6 10 R	5733	Chicago, Ill.	3 R
5703	" " (B)	3 R	5734	" "	2 2E 3 6 R
5704	Phoenix, Ariz.	1 2 3 R	5734	S.F.	3 5 R
5705	Milwaukee, Wis.	1 1D 1E 2 3 10 R	5735	Chicago, Ill.	2 3 6 R
5705	Chicago, Ill.	1 1E 2 3 10 R	5736	" "	3 R
5706	" "	2 3 6 R	5736	Kansas City, Mo.	3 6 R
5707	" "	2 3 R	5736	N.Y.	2 3 6 15 R
5708	L.A.	2 3 6 R	5737	Chicago, Ill.	2 3 R
5709	L.A.	2 3 6 15 R	5738	N.Y.	3 6 8 R
5710	Sacramento, Calif.	3 R	5741	Buffalo, N.Y.	3 R
5710	S.F.	1D 1E 2 3 R	5741	Chicago, Ill.	3 8 R
5710	San Jose, Calif.	1E 3 6 R	5743	L.A.	3 8 R
5710	L.A.	3 R	5744	Chicago, Ill.	3 R
5711	S.F.	2 3 R	5744	N.Y.	3 R
5711	Palo Alto, Calif.	1 1D 2 3 R	5746	Chicago, Ill.	3 R
5712	L.A.	1 2 3 R	5748	Detroit, Mich.	3 R
5713	L.A.	2 3 R	5748	Chicago, Ill.	1E 3 R
5714	Berkeley, Calif.	1 2 3 R	5748	" " (B)	3 R
5715	N.Y.	1D 2 3 R	5749	Chicago, Ill.	3 R
5715	Newark, N.J.	1 3 R	5749	N.Y.	3 R
5716	L.A.	2 3 R	5750	San Bernardino, Calif.	3 R
5716	Philadelphia, Penna.	1E 2 2E 3 R	5750	L.A.	3 R
			5752	N.Y.	3 4 R



SUPPLEMENT #1 TO TYPE FC (DG) PUBLISHED IN 1949 REPORTER

1000 R	New York, N.Y.	6		P	New rate	Covill
1005 R	New York, N.Y.	6		P	New rate	Covill
1015 R	Hoboken, N.J.	3		P	New town	Lapham
1023 R	Philadelphia, Pa.			S	Slogan	Lapham
1024 R	Philadelphia, Pa.	1	E	P	New town	Edwards
1034 R	Elizabeth, N.J.	2		P	New town	Brown
1036 R	New York, N.Y.	3		P	New town	Webster
1044 R	New York, N.Y.	1	D	P	Rate & position	Osborne
1046 R	New York, N.Y.	6		P	New rate	Osborne
1053 R	New York, N.Y.	4		P	New rate	Osborne
1057 R	New York, N.Y.	30		P	New rate	Whiteborough
1059 R	New York, N.Y.	5		P	New rate	W. Swan
1068 R	Brooklyn, N.Y.		E	P	Position	Osborne
1071 R	New York, N.Y.	3		P	State added	Lapham
1082 R	Springfield, Mass.	2		P	New rate	Osborne
1088 R	Brooklyn, N.Y.	3		S	New town	Covill
1090 R	New York, N.Y.		D	P	Position	Osborne
1093 R	New York, N.Y.	4		P	New rate	Whiteborough
1098 R	Mineola, N.Y.	3		P	New rate	Lapham
1098 R	Mineola, Y.N.	3		P	Transposition	Lapham
1101 O	San Francisco, Cal.	3		P	New color	Lapham
1105 R	Mineola, N.Y.	12		P	New rate	Lapham
1107 R	Philadelphia, Pa.	3		S	New town	Covill
						Lapham
1118 R	York, Pa.	3		S	New town	W. Swan
						Lapham
1118 R	Los Angeles, Cal.	3		P	State abb.	Pyle
1123 R	New York, N.Y.	1	E	P	Rate & position	Lapham
1130 R	New York, N.Y.	5		P	New rate	Brown
1137 R	York, Pa.	3		P	New town	Lapham
1139 R	New York, N.Y.	6		P	New rate	Lapham
1144 R	New York, N.Y.			S	Slogan	J.M. Swan
1147 R	Jamaica, N.Y.	1	E	P	Rate & position	Osborne
1151 R	West New York, N.J.	6		P	New rate	Hess
1162 Be	New York, N.Y.	3		S	New color	Covill
1166 G	New York, N.Y.	1	E	S	New color	Lapham
1175 R	Mineola, N.Y.			S	Slogan	Lapham
1198 R	New York, N.Y.	2		P	New rate	Osborne
1199 R	New York, N.Y.	5		P	New rate	Hess
1202 R	Phila., Pa.	1	E	P	New town	Edwards
1203 R	Brooklyn, N.Y.	6		S	New rate	Webster
1207 R	Jamaica, N.Y.	3		P	New	Osborne
1212 R	Philadelphia, Pa.	1-3	E	PS	New town	Brown
1212 R	Stroudsburg, Pa.	1	E	S	Rate & position	Brown
1213 R	New York, N.Y.	5		P	New rate	Brown
1215 R	New York, N.Y.	3			New rate	Osborne
1220 R	Philadelphia, Pa.	1	E		Rate & position	Edwards
1221 R	Philadelphia, Pa.	1	E	S	Rate & position	Brown
1234 R	New York, N.Y.	9-15		S	Rate & slogan	Lapham

Cont'd.

SUPPLEMENT #1, Cont'd.

1235 R	Philadelphia, Pa.	3		F	New town	Covill
1243 R	New York, N.Y.	1-2-4		P	New rate	Covill Lapham
1245 P	New York, N.Y.	1	E	S	New color	Pyle
1260 R	New York, N.Y.	1	E	P	Rate & position	Lapham
1261 G	New York, N.Y.			P	Plain	Lapham
1262 R	Philadelphia, Pa.			S	Slogan	Brown
1262 R	East Stroudsburg, Pa.	1-3	D	P.S.	New town Brown	Brown Webster
1263 R	Ridgewood, N.J.	2-3		P	New town	J. M. Swan
1264 Be	Brooklyn, N.Y.					
	Queens Co.	1			New rate	Lapham
1272 R	Long Island City, N.Y.	6			New rate	Lapham
1295 R	New York, N.Y.	3		P	New town	Webster
1297 R	New York, N.Y.	3		P	New town	Lapham
1325 R	New York, N.Y.	3		P	New	Lapham
1326 R	Atlantic Highlands, N.J.	3		P	New	Edwards
1358 R	New York	3		P	No state	Lapham
1360 R	New York, N.Y.	3		P	New	Covill
1379 R	Philadelphia, Pa.	1	E	S.	New town	Brown