

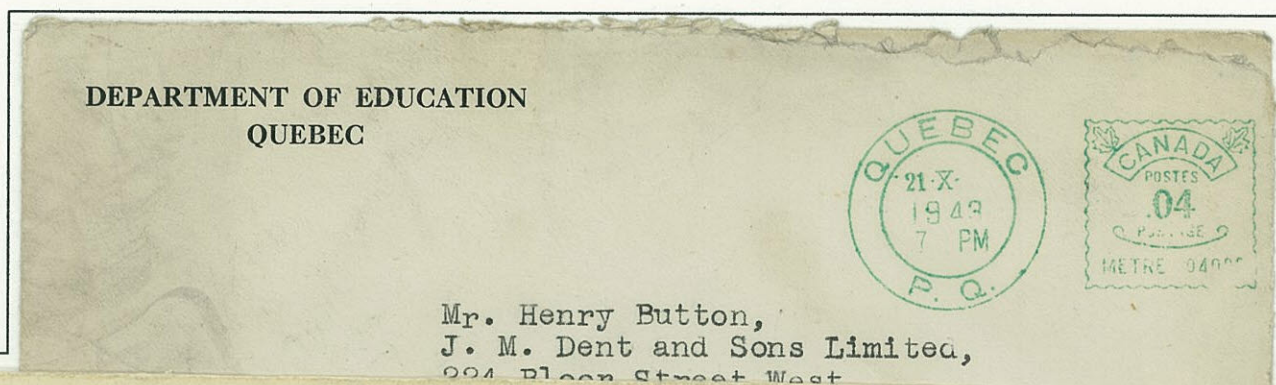
1.3.1 First Pitney Bowes Stamp



The first stamp like indicia used in 1932. Used until 1970.
Values: MV(10). (1-50¢) printed through the fixed indicia.
French and English "Postes" and "Postage" above and below the value.
FV: .00
Meter Numbers: 47000+ and 80000+, and Converted Model M 04000+
With words: "Meter", "Meter No." or "Meter-Compteur"
Setting: 5 mm and 26 mm.

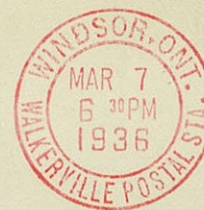
Fourteen Universal Model M meters were converted: Setting 5 mm.

"Metre"
Triple line date.
Setting 5 mm.
European and US Style Date.
Meters: 04000-04003
Converted MV(3) Model M



Mr. Henry Button,
J. M. Dent and Sons Limited,
224 Bloor Street West

Ford Motor Company of Canada
LIMITED



The London Life
Insurance Company
London, Canada

A NEW
POLICYHOLDER
Joins
THE LONDON LIFE
EVERY MINUTE
of the Working Day



Mr. Thomas H. Freeman,
1677 Dundas St. W.,
TORONTO, ONT.

"Metre No."
Triple line date.
Setting 5 mm.
Meters: 04004-04014
Converted MV(3) Model M

1.3.1 First Pitney Bowes Stamp



General Equipment
LIMITED
224 WEST 5th AVENUE • VANCOUVER 10, B.C.



The Nash Engineering Company,
South Norwalk, Conn.
U.S.A.

AIRMAIL

USA 1954
Rate: 7 cents airmail first 1 oz
5 cents airmail next 1 oz
22 cents airmail 4 oz
12 cents paid/10 cents due



AIRMAIL



Parcel Post Mailings



Military Usage
"N.P.O" Navy Post Office

MV(10) Meters: Setting 26 mm
Setting variable when multiple strikes required.

Examples of High Value Usage

1.3.1 First Pitney Bowes Stamp



MV(10) Meters: Setting 26 mm
Setting variable when multiple strikes required.

Great Britain 1944
Rate: 30 cents Airmail per 1/2 oz
10 cents Registered

PICKFORD & BLACK LIMITED
STEAMSHIP AGENTS · CUSTOM BROKERS · STEVEDORES
HALIFAX
CANADA



Ministry of Supply, (Paper Control)
Great Western Hotel,
Reading, Berkshire,
England.



BY AIR MAIL - PAR AVION

PASSED FOR EXPORT



BY AIR MAIL - PAR AVION

Mr. Michael Katzenstein,
9 Alfasi Street,
Jerusalem, Israel.

Israel 1951
Rate: 25 cents airmail per 1/2 oz
50 cents total for 1 oz

Franco-Gellschaft A.G. "Muti-Valor" of Berlin postage meter

Introduced 14 September, 1933 Imported by Pitney Bowes.

Value: OV \$0.01 and \$9.99. First Omni Denomination Meter for Pitney Bowes.

Meters: 1021, 1022, 1023, 1024 and 1025 with "METRE" or "METRE NO."

Withdrawn: 16 October, 1936.

NCR had introduced the first omni-denomination meter to Canada in 1925. PB had introduced a multi-value unit in 1932 that could print just 10 postage values. PB imported five Franco units in 1933 to meet the competition.



1.3.2 The Franco Stamp

Variations of Franco Meter Indicia

Type	Meter #	Number Size	Indicia Size	Setting	TM Size	"METRE/ METRE NO."
1	1021	7 mm	26x27	15 mm	23	METRE
2	1022	8 mm	30x28	12 mm	30	METRE NO.
2	1023	8 mm	30x28	12 mm	30	METRE NO.
2	1024	8 mm	30x28	12 mm	30	METRE NO.
2	1025	8 mm	30x28	12 mm	30	METRE NO.

Parcel Post Tapes

METRE 1021



METRE NO. 1022



METRE NO. 1024



METRE NO. 1025

RETURN AFTER FIVE DAYS TO

The St. Croix
SOAP MANFG CO.

AT POINT OF MAILING



1.3.2 The Franco Stamp

METRE NO. 1024

LEVER BROTHERS LIMITED
TORONTO 8, CANADA



METRE NO. 1023

LEVER BROTHERS LIMITED
TORONTO 8, CANADA



IF NOT CALLED FOR IN FIVE DAYS PLEASE
RETURN TO
THE CANADIAN BANK OF COMMERC
TORONTO 2, ONT.



DEUTSCHE BANK UND DISCONTO-GESELLSCHAFT

BERLIN W 8

GERMANY

B Eingang D. B. u. D.-G. B
-3 APR 34 V. * 0103 * 00801
Beantwortet.

METRE NO. 1022
Unusual Foreign
Destination.

1.3.3 Second Pitney Bowes Stamp



The Second Stamp Design introduced 13 April, 1934. Withdrawn ca1955.
 French and English "Postes" and "Postage" are to the right and left of the value frame.
 Values: SV, MV(3) and MV(5): 1¢ to \$1.00.
 Meters: 40000-48000

"Metre 0000"
 Townmark: DC
 Setting: Operator Variable 8 to 26mm.
 Single line date.



1.3.3 Second Pitney Bowes Stamp



POW Mail Form

PRISONER OF WAR MAIL **FREE**
FRANC DE PORT

AIR MAIL

P.O.W. 133
MAY 9 1945

CANADA
30
CENTS
METRE 48007

Fräulein
Marianne Kruse
15 Heiligenstadt-Eichsf.
Holzweg 14.

FORM NO. 17
M.F.M. 316
650M 10-44 (5691-2-5333)
H.Q. 1772-39-2054
K.R. 18372

Air Mail
Great-Bernburg-
GEMILED BY D. B. / 699

Canada maintained about 40 POW camps during World War II for Italians and Germans. Mail home was free if by surface. The prisoners had to pay normal rates for airmail, most paid with postage stamps.

Only three camps used postage meters for prisoner mail:

Meter Number	Camp Name	Location	Years Operated	Meter Usage
40007	Camp 133	Lethbridge, Alberta	1942-1946	Fairly common
40008	Camp 132	Medicine Hat, Alberta	1943-1945	Proof only known
40009	Camp 23	Monteith, Ontario	1940-1946	Very few known

1.3.4 Third Pitney Bowes Stamp

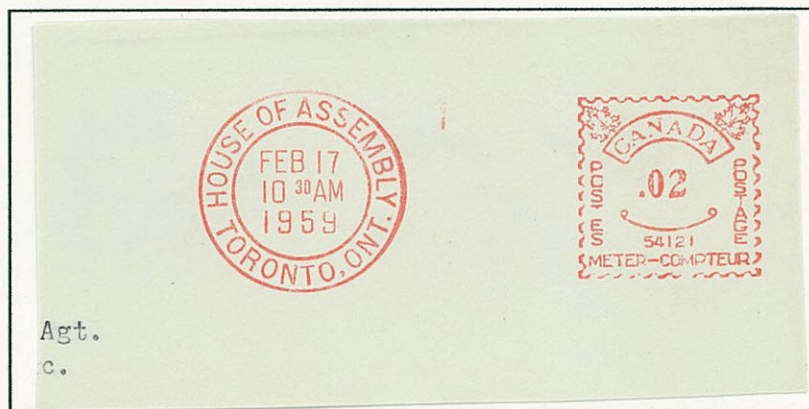


Third Stamp design, introduced in 1934. Withdrawn 1972.
 French and English "Postes" and "Postage" placed vertically to the right and left.
 Line under value turns upward.



Values: SV and MV(6) ½¢-18½¢.
 FV: .00
 Meters: SV 04015-04018
 MV(6) 54000+ and 55000+
**Four single value meters were
 reconditioned Model M (Large
 Shield).**

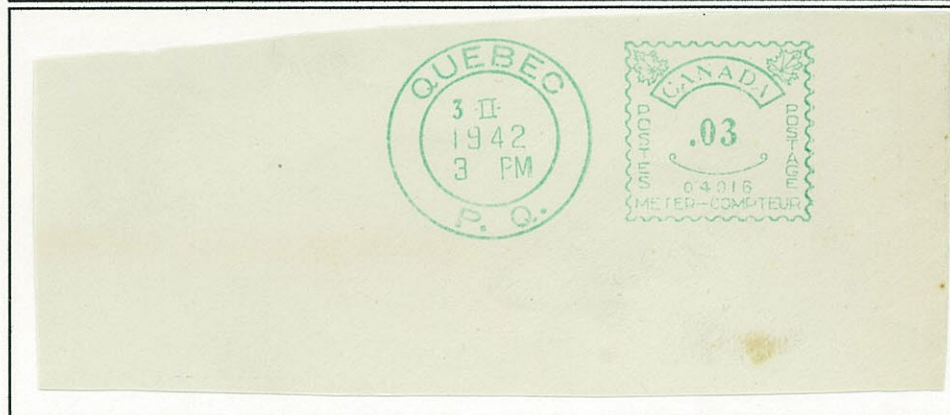
"Metre"
 Triple line date.
 Setting: 21 mm.



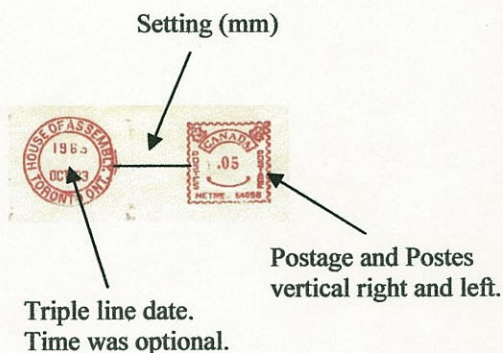
"Meter-Compteur"
 Triple line date.
 Setting: 21 mm.



"Meter-Compteur"
 Triple line date.
 Setting: 11 mm.



"Meter-Compteur"
 Triple line date.
 Setting: 5 mm.
 Single Value Meter
Four Model M units only.



DELL'S
43 Main St. E.
Hamilton, Ont.



Mr. W. W. Crawford,
1100 Burlington St. E.,
Hamilton, Ont.



1.3.4 Third Pitney Bowes Stamp

Third Stamp design
Introduced in 1934.
Withdrawn 1972.
French and English "Postes" and "Postage"
placed vertically to the right and left.
Line under value turns upward.

Values: MV(6) ½¢-18½¢.

FV: .00

Meters: MV(6) 54000+ and 55000+

"Metre"

Double or Triple line date.

Setting: 21 mm.



INSURED AGAINST LOSS ONLY

INSURED PARCEL

No.....0720...

Mrs. Dr. H.G. Wood,

841-9th Avenue,

South West,

Rochester, Minnesota.

~~0684~~

PASSED FOR EXPORT

CANADA—PARCEL POST

FRAGILE

Handle WITH CARE

TO LETTER CARRIER
PLEASE KEEP FLAT
From G.D. Reid
674 Dundas St. W.,
Toronto.



1.3.4 Third Pitney Bowes Stamp

Values: MV(6) 1/2¢-18 1/2¢.

FV: .00

Meters: MV(6) 54000+ and 55000+

"Metre-Compteur"

Double or Triple line date.

Setting: 21 mm.

Four single value meters were reconditioned Model M (Large Shield).

Values: SV .01¢ to .03¢

FV: .00

Meters: SV 04015-04018

"Metre-Compteur"

Double or Triple line date.

Setting: 5 mm.

Two of the four: 04016 and 04017

ONTARIO HOSPITAL SERVICES COMMISSION
HOSPITAL INSURANCE BRANCH
TORONTO 7, ONT.

THE HOSPITAL SERVICES COMMISSION ACT, 1957 FORM III

PREMIUM NOTICE

THIS PREMIUM WILL PAY FOR THE BENEFIT PERIOD FROM (12.01 A.M.) TO

DAY	2	YR.	Y	M	YR.
1	1	1	1	2	6

A M HUGHES
138 DORSET ST W
PT HOPE ONT

ST. SUPP.	INSURANCE NUMBER	AMOUNT
1	70392097	630

PAID

DEPOSIT NUMBER 4335

ONTARIO HOSPITAL SERVICES COMMISSION

TORONTO AUG 8 1961

CANADA .02 METER-COMPTEUR # 54118

IBM 64450 IBM 64451

BUREAUX DU REVENU DE LA PROVINCE
PROVINCIAL REVENUE OFFICES
QUÉBEC.

OFFICE DU TOURISME
PROVINCE OF QUÉBEC
TOURIST BUREAU
QUÉBEC CANADA

QUEBEC 30 X 1942 7 PM P.Q.

CANADA .03 METER-COMPTEUR # 04016

QUEBEC 31 XII 1942 P.Q.

CANADA .01 METER-COMPTEUR # 04017

THE EDITOR,
WASHINGTON STAR,
WASHINGTON, D.C.,
U.S.A.

603

1.3.5 NPM/Commercial Controls Stamp

National Postage Meter Co. placed two meters 13 April 1943
Meters: NPM 9922, NPM 9923
Used in limited tests. Examples can be elusive and only known as proofs.

NPM Proofs shown in Red and Black for demonstration only.

Commercial Controls Brochure Distributed in Canada ca1945.



ONLY

COMMERCIAL CONTROLS *Offers Complete Mailroom Service*

COMMERCIAL CONTROLS' line of USPM Systems and Equipment is the result of years of research devoted to the task of mechanizing the mailroom to keep pace with modern business methods.

This research has developed metered mail machines, letter openers, envelope sealers, mailroom scales and other mailroom equipment that are marvels for speed, performance and dependability. But equally important to the progressive executive is the wealth of experience in solving mailroom problems and in mailroom planning that has been accumulated through these years. This experience can prove invaluable to you.

Every USPM specialist is trained to solve such problems through planning, systems and machines. He will gladly help you at any time without obligation. If you have a mailroom problem, call on him for consultation. And remember, only Commercial Controls gives you truly complete mailroom service—initial planning of the mailroom—systems and equipment to fit your particular requirements!

COAST-TO-COAST SERVICE—USPM service is always within easy reach. Trained specialists are located at Commercial Controls' sales and service offices in principal cities.

THE *USPM* METERED MAIL SYSTEM... Makes any Mailroom run like clockwork!

FAST, smooth-working mailroom facilities are essential to the efficient conduct of any business. Nothing provides this speed and smoothness more effectively than a USPM Metered Mail System.

Such a system cuts postage costs, saves clerical hours, increases sales and builds prestige. It gives you greater direct mail

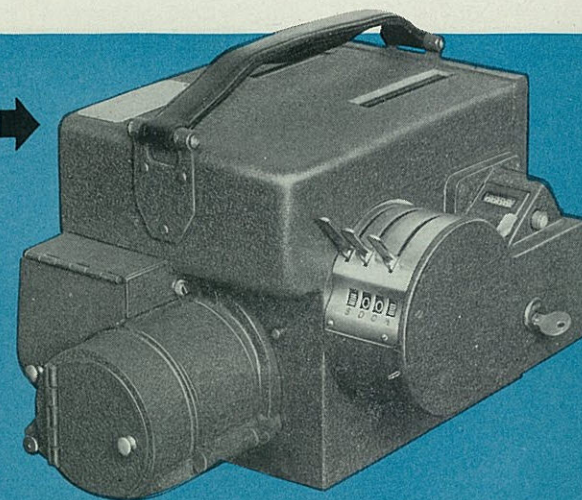
returns and the value of your own advertising message printed on every piece of mail. It steps up mail handling in your own office and through the post office. It establishes positive control over your postage account and automatic protection against postage loss. A USPM Metered Mail System makes *any* mailroom run like clockwork!

HEART OF THE SYSTEM...

THE *USPM* OMNI DENOMINATION METER

USPM Omni Meters are built for heavy duty and are capable of withstanding continuous operating punishment for many years. They will print any denomination of postage from ½ cent to \$9.99½ in one impression directly onto envelopes or on gummed tape for overweight mail and parcel post. Convenient fingertip controls adapt the meter for rapid preparation of all classes of mail: first class, third and fourth class, air mail, registered mail and bulk mailings. The Omni meterstamp gives uniform appearance to all classes of mail.

In addition, these meters provide a running record of the amount of postage used, show the amount of postage remaining in the meter and count the pieces mailed—giving a complete audit of your postage account.



The National Postage Meter Co. introduced meters in April 1943. Changed name in 1944 to Commercial Controls Corporation. Commercial Controls became a part of Friden in 1960 and the "CC" meters were removed from service in August 1970.

1.3.5 Commercial Controls Stamp



Values: OV .01¢-\$9.99

FV: W.00

"Meter—Compteur" and "CC—No 00000" under FV.

Townmark: SC with Long or Short Arcs

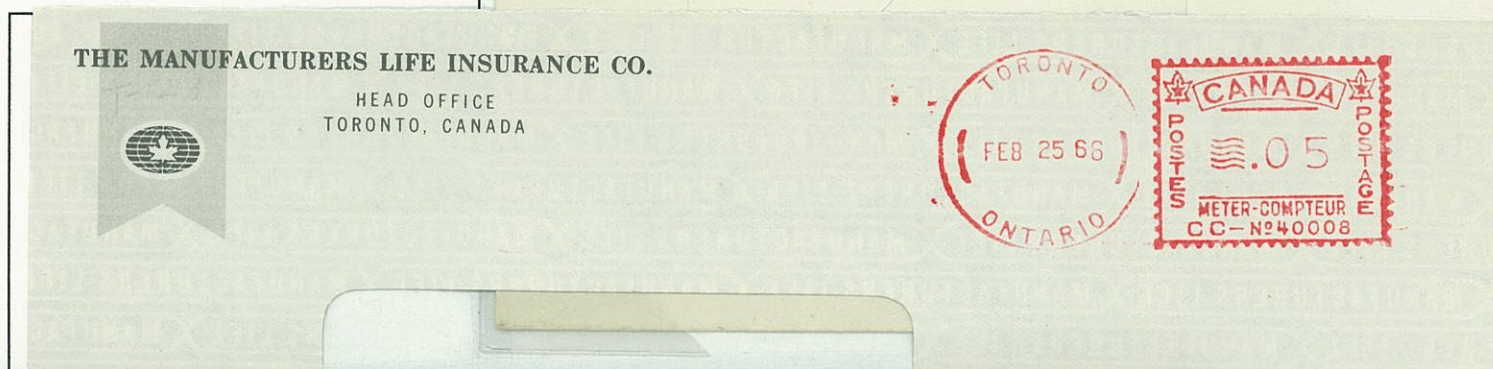
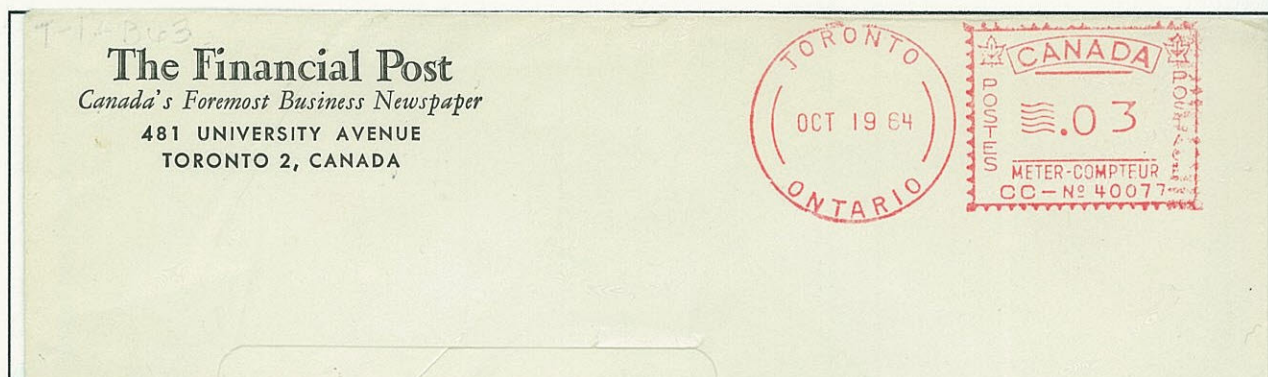
Meters: 40000+ (82 units in total.)

First Used: 1944

Withdrawn: August 1970

Indicia 30x25. mm

Short and Long Arcs in Townmark



A Freak With Smaller Indiciam
Caused by envelope slippage during
printing.