

Roneo Neopost Brochure
Printed in G.B. ca1950

1.3.6 Roneo Neopost Stamp



Roneo Neopost. Designs as used
in the U.K and Newfoundland
and worldwide
Newfoundland units from 1928.
Converted to Canada in 1949.

DOES
anybody
CARE
ABOUT THE
POST?



Roneo Neopost Proof Cover

1.3.6 Roneo Neopost Stamp



Roneo Neopost placed Neopost meters April 1950. Designs as used in the U.K and Newfoundland.

Newfoundland units (used since 1928) converted to Canada in 1949.

Values: MV(6) 1¢-7¢, 10¢, 15¢, and 25¢.

Meters: 101+ Canada, N8-N32 converted from Newfoundland.

Total of 26 Units were reported in use in 1966. Last use 1970.

Newfoundland Neopost meter converted to Canada in 1949. Meter number: "N 00".

Also shown, a Newfoundland meter dated 1950 not yet converted to Canada a year after Newfoundland joined Canada in 1949.

Townmark: BIC with Arcs

"Postes" and "Postage" to the right and left of value. "Compteur Meter" in very small print to the left.

Meter number: "000" (except former NFLD)
Setting: 20 mm

grocers'
Headquarters.



THE ROYAL STORES, LIMITED
St. JOHN'S, NEWFOUNDLAND



Mr. P. Blackmore,

SPARE PARTS MONEY
RONEO
USE **RONEO**
LATERAL FILING
AT POINT OF MAILING

RONEO COMPANY OF CANADA LTD.



RONEO **RONEO**
COMPANY OF CANADA LIMITED
AT POINT OF MAILING
for duplicating



L'EDUCATION
GARANTIE
DE L'AVENIR

London Assurance Company Ltd.,
255 St. James St. West,
Montreal, P.Q.

Att: Mr. Saunders

HALIFAX

QUEBEC

MONTREAL

OTTAWA

TORONTO

WINNIPEG

CALGARY

VANCOUVER

VICTORIA

1.4 Crown Indicia



Crown Specimen on Tape, 1938





Crown on Tape with Department Slug, 1942
Dept. of Public Printing and Stationery
Only government dept. known to do this.



Port of Spain, Trinidad
Backstamp

Mailed during WWII and carried by
Pan American to Trinidad where it was
censored by the British.

Pitney Bowes produced its first omni denomination meter in 1936. The design of the indicia included the townmark and value box together. The design is dominated by a crown in between with the meter number.

Crown Design	Dates	Value Box	Townmark	Meter Number	Notes
1.4 Crown 	1936-1955	27x22mm OV to \$9.99 FV: .00 or * 00	SC SLD	94000 block with "Meter" or "Meter/Compteur"	Also Used in Post Offices
1.4 Mailomat Crown 	21/9/1938 to 10/10/1938	17x21 mm OV to \$9.99 FV: * 00	SC SLD	101 (one unit only) "Meter/Compteur"	Vending Machine

1.4 Crown



AFTER 5 DAYS RETURN TO
CANADIAN KODAK SALES LIMITED
TORONTO 9, ONTARIO

WIN the WAR
Buy
WAR SAVINGS STAMPS



Crown Design

Introduced May 1936.

Withdrawn ca1955.

Value: OV: 1¢-\$9.99

FV: .00 or *00

Meters: 94035-94125

“Metre”

FV: .00

This variation is much less common.

Henry Morgan & Co. Limited,

SCOTT CLOTHING CO. LTD.
LONGUEUIL, P.Q.



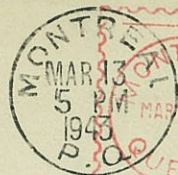
WIN the WAR
Buy
WAR SAVINGS STAMPS



“Meter-Compteur”

FV: *00

WIN the WAR
Buy
WAR SAVINGS STAMPS



Henry Morgan & Co Ltd
St. Catherine St. W
Montreal, Que.

“Metre”
FV: *00

1.4 Crown



Crown Post Office Meters



Crown Indicia PO Meter
"Meter" above meter number.
Only 94007 and 94028 were used.

Crown Indicia PO Meter
"Meter" and "Compteur" above
and below the meter number.
Eight units were used thus.



Mail-o-mat

Mail-o-mat postage vending machine placed in post office lobby.

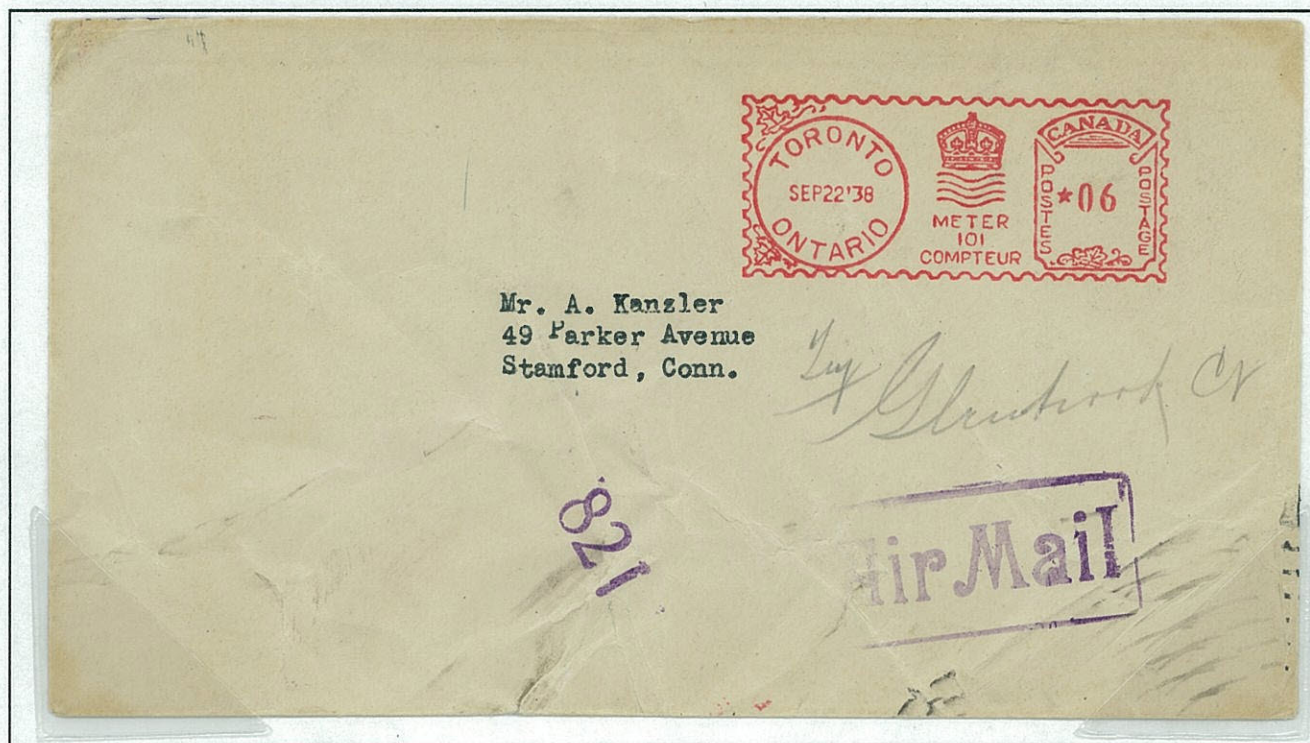
Value Box: Narrower than other Crown Design units

Values: 1¢-23¢

Meter: **101 One Unit Only**

Introduced: 21 September 1938

Removed: 10 November 1938



This cover was wrinkled by a canceling machine in Connecticut.

Crown Mail-O-Mat No. 101
While likely philatelic in nature this meter is NOT a first day cover and considered hard to find.

1.5 Maple Leaf Indicia

PITNEY-BOWES

Proudly Presents the model

RM

POSTAGE METER MACHINE

The Master Mailing Machine



PITNEY-BOWES OF CANADA, LTD.
AT POINT OF MAILING



Maple Leaf Indicia Designs

1.5.1 First Pitney Bowes Maple Leaf



Dates	Value	Box	Town Mark	Meter Number Notes
1940	18x23mm	SC		Wide Range of Meter Numbers
1995	OV to \$1.00 or to \$9.99.	SLD		

1.5.2 Pitney Bowes Small Maple Leaf



1949	12x13mm	SC		240000-241000
1995	MV 1 to 21¢	SLD		

1.5.3 Pitney Bowes Third Maple Leaf

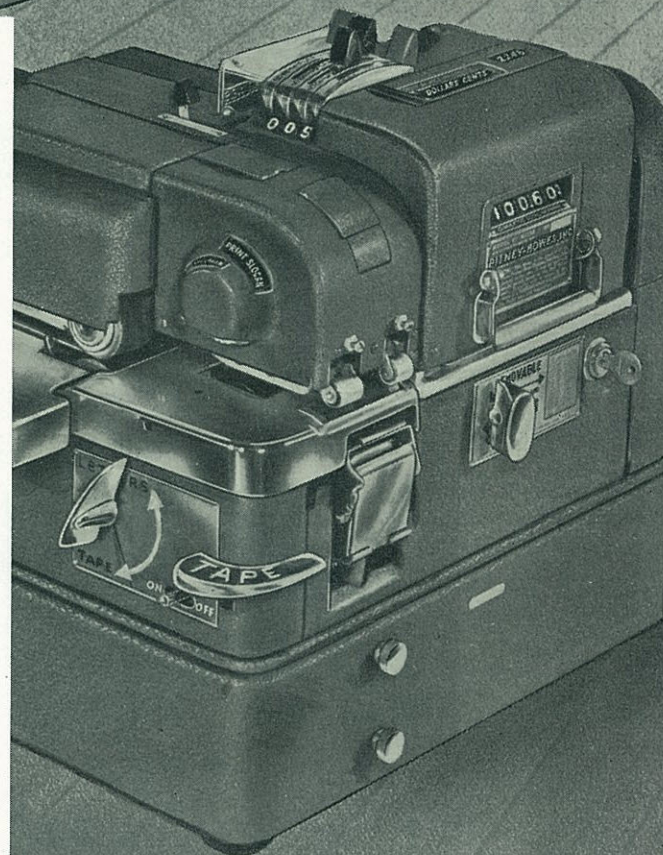


1956	20x22mm	SC		15600-16300
2002	OV to \$9.99 ⁹	SLD		

1.5.4 Pitney Bowes Fourth Maple Leaf



1959	24x22mm	SC		Wide Range of Meter Numbers
2002	OV to \$9.99½	SLD		





**1.5.1 First Pitney Bowes
Maple Leaf Indicia**

Pitney Bowes, always dominant in North America, was also very strong around the world.

Magazine Advertisement ca1962
Cropped Graphically from 10x12"

In our own little way, we've helped solve one of man's complex problems.

In 1920 in Stamford, Connecticut, a man printed the first metered mail. It was hardly heard 'round the world. In fact, the letter went only to Greenwich. Five miles away, if that.

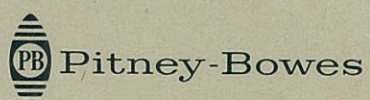
By inventing the postage meter, we automated the stamp. And, as the use of the mails increased, so did the importance of our little machine. Simply by having the right postage on hand and printing it right on the envelope, our meter found a permanent place in the mailrooms of the country's efficiency-

minded businesses.

Nearly half of this country's mail is now metered. Our machines even help get the mail through in 103 nations abroad. And not all of our clients are giants. In fact, many of our new users of meters mail fewer than 10 letters a day.

Whether you sell plumbing supplies in Long Island or export hemp from Rangoon it makes no difference. If you've got one letter to mail, you've got the same problem. And, with the Pitney-Bowes meter, the same solution.

Large Maple Leaf cover to the Netherlands.
Amsterdam Postage Due produced by a Postalia Meter.

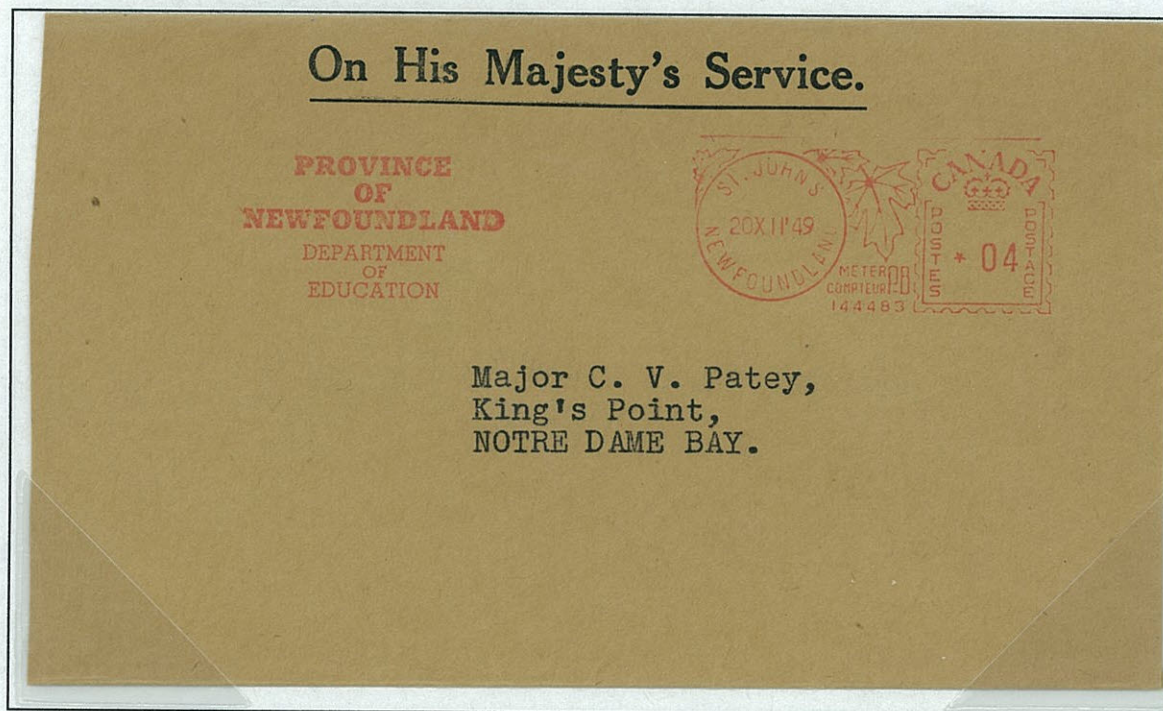


For more information, write Pitney-Bowes, Inc., 1132 Pacific Street, Stamford, Conn. 06904 or Pitney-Bowes International, Dept. 7332, 51/53 Hatton Garden, London, E.C. 1/England. Postage Meters, Addresser-Printers, Folders, Inserters, Counters & Imprinters, Scales, Mailopeners, Collators, Copiers. Subsidiary offices in Frankfurt, Paris, Rio de Janeiro, Toronto, Zurich and dealers throughout the world.

1.5.1 First Pitney Bowes Maple Leaf

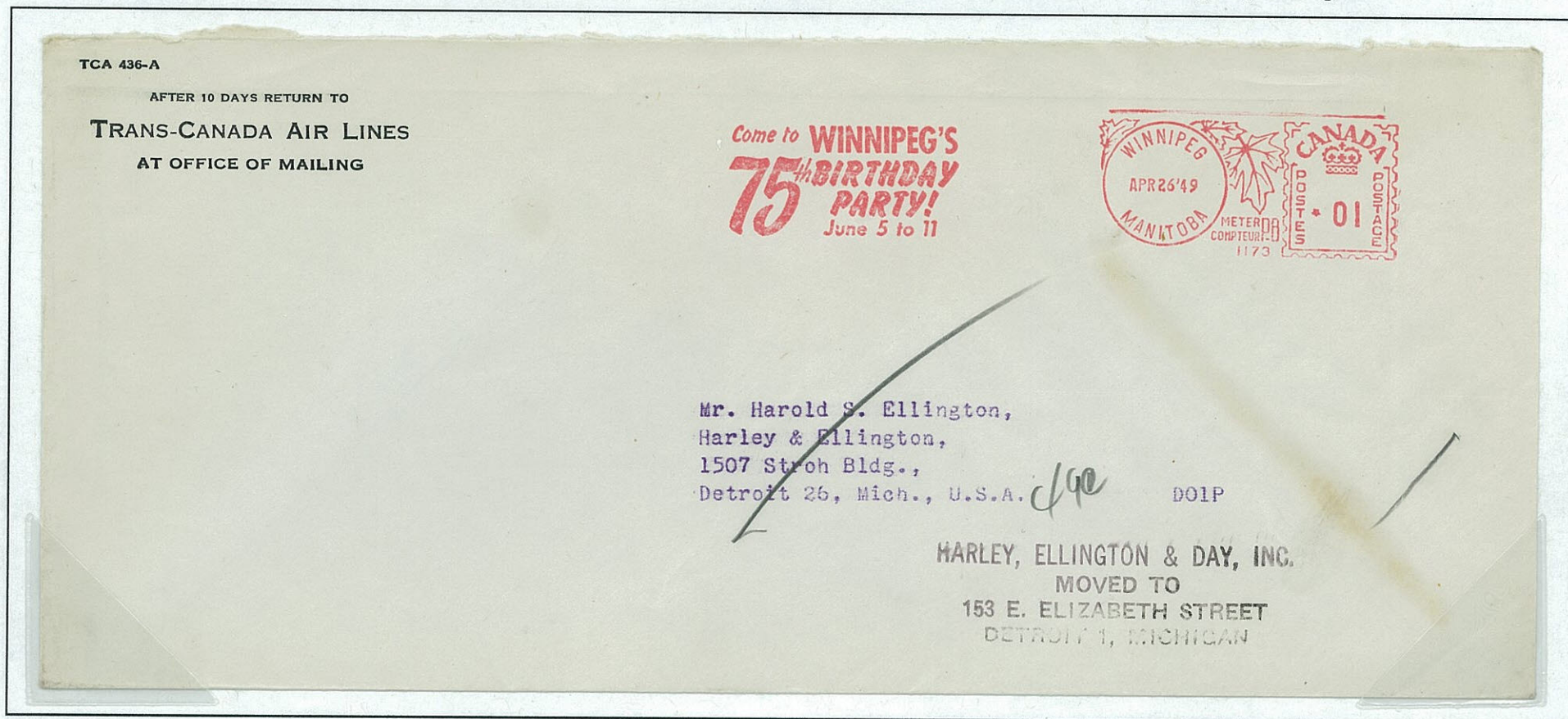


First Maple Leaf indicia introduced May 1940. Indicia designs united the value frame and townmark with Maple leaf between.
 Value may be preceded by a star, a period or triad wavy lines. Some models printed values over \$1 in this position.
 Colon follows the value in some cases to print ½¢.
 Date one line US or European format.
 Withdrawn 4 January, 1995. 60 years of service..



FV: *00
 Value: OV to \$1.00 or \$9.99
 Meters:
 140000+, 150000+, 164000+, 1004-1624
 180000-180017 From Newfoundland
 Used: 18 May, 1940- 4 January, 1995

This example is part of the group with low meter numbers. Technicians noticed that about 600 meters were assigned the wrong meter number range. The first two digits were removed to solve this issue resulting in the group having numbers 1004-1624.



1.5.1 First Pitney Bowes Maple Leaf



Unusual design: French "POSTES" moved below the townmark. Perhaps six meters used from 1952 to 1959 in Montreal.

FV: *00:

Value: OV to \$1.00 ½

Four Meters Known To Date. Two Unlisted Shown Here.

Meters: 146124, 143377, 152625, 152626 and Unlisted: 153288, 153289.

Les Postes du Sacré-Coeur
2830 EST, BOUL. GOUIN
MONTRÉAL 12, P. Q.



CITÉ DE MONTRÉAL
CITY OF MONTRÉAL

DIVISION TECHNIQUE
ENGINEERING DIVISION



VILLE DE MONTRÉAL
SERVICE DES FINANCES
DIVISION DE LA PERCEPTION DES TAXES

CITY OF MONTREAL
DEPARTMENT OF FINANCE
TAX COLLECTION DIVISION

Aujourd'hui Postez
Votre Remise de Taxes
Mail Your Tax Payment
Today



JOHN LOVELL & SON, LIMITED

ESTABLISHED 1835

Printers - Publishers - Bookbinders

423 ST. NICHOLAS STREET
MONTREAL 1



Meter 153288

Meter 153289

1.5.1 First Pitney Bowes Maple Leaf



Three Limited Use Sub-Designs

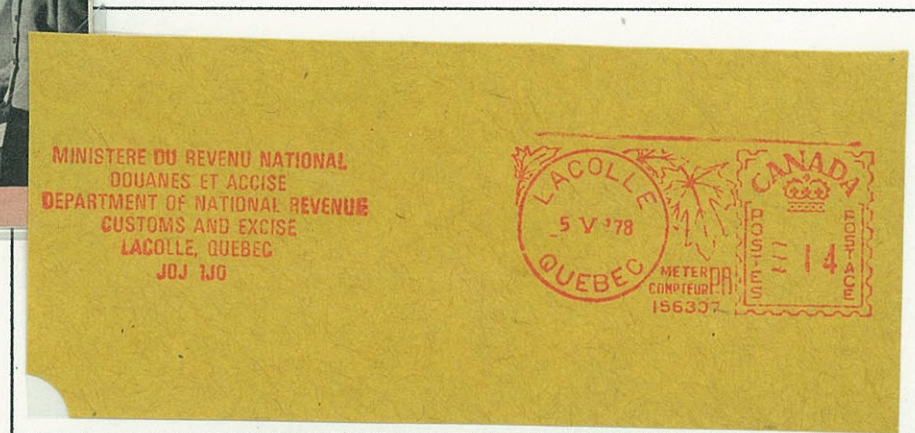
FV : .00
 Value: OV to \$.99
 Trois Riviers, PQ
 Meter: 143003 only known.
 Used: 1969-1973



FV: *0:
 Value: OV to \$.99½
 Meters: 145776, 145778, 146124 Only.
 Used: 1952-1962



FV: W 00
 Value: OV to \$.99
 Meters: 1440000+ Approx 106 Units Known.



Pitney Bowes Multi-page brochure ca1950.

DETACH AND RETURN THIS PAGE FOR

- ILLUSTRATED FOLDERS ON THE FOLLOWING MACHINES _____
- PRICE INFORMATION
- FREE DEMONSTRATION
- FREE SURVEY

We'll gladly send you — without cost or obligation — illustrated folders on any of the cost-cutting Pitney-Bowes equipment described in this booklet. Simply indicate above which machine (or machines) you're interested in. Also check where shown if you'd like price information . . . a free demonstration in your office . . . a free survey of your postage and mailing setup (or of any other office operation covered by PB equipment). Then fill in the coupon below, detach this page, and mail it to Stamford or to your nearest PB branch office. We'll get in touch with you promptly.

PLEASE PRINT

INDIVIDUAL

FIRM

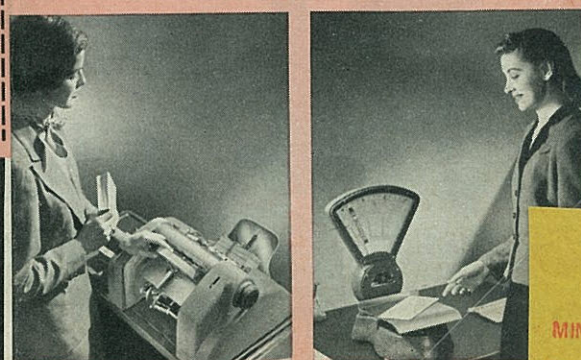
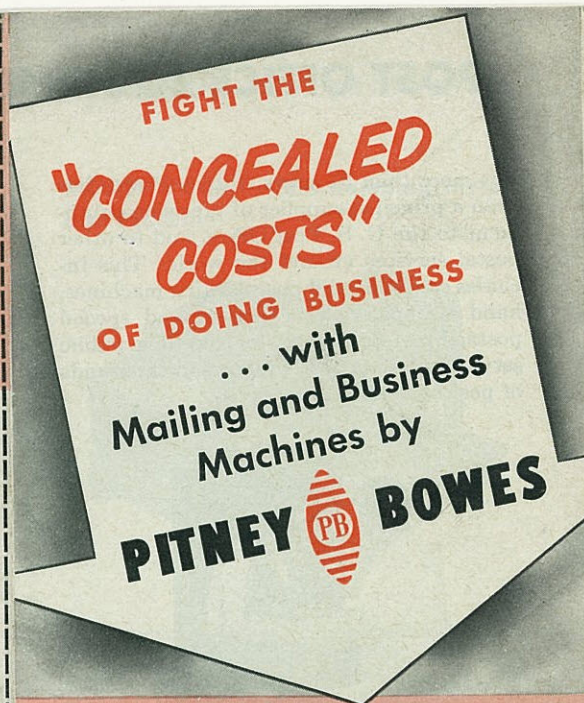
STREET ADDRESS

CITY..... ZONE..... STATE.....

TEAR OFF AND MAIL TO
PITNEY-BOWES, Inc.
 Walnut and Pacific Streets
 Stamford, Connecticut

Printed in U. S. A.

Form No. 229A LP DR-651-150



PITNEY-BOWES OF CANADA LTD.
 181 KING ST. W.
 TORONTO, ONTARIO
 EM. 3-0048



1.5.1 First Pitney Bowes Maple Leaf

Small Parcel and Package Tags.

Meter Tape on small
Royal Mint shipment.

LIMITED
RIO



Supplies.
ing in Machinery and
TREAL QUE
PARK AVENUE
RONTO, ONT.
FRONT ST. W.
MPANY, LIMITED
ACHINERY
WILLIAMS
THE



Meter Tape attached to a
small bag parts shipment.

Meter Tape used to finish
off an expensive coin ship-
ment paid by high value
Peace Issue stamps.



1.5.1 First Pitney Bowes Maple Leaf Post Office Meters

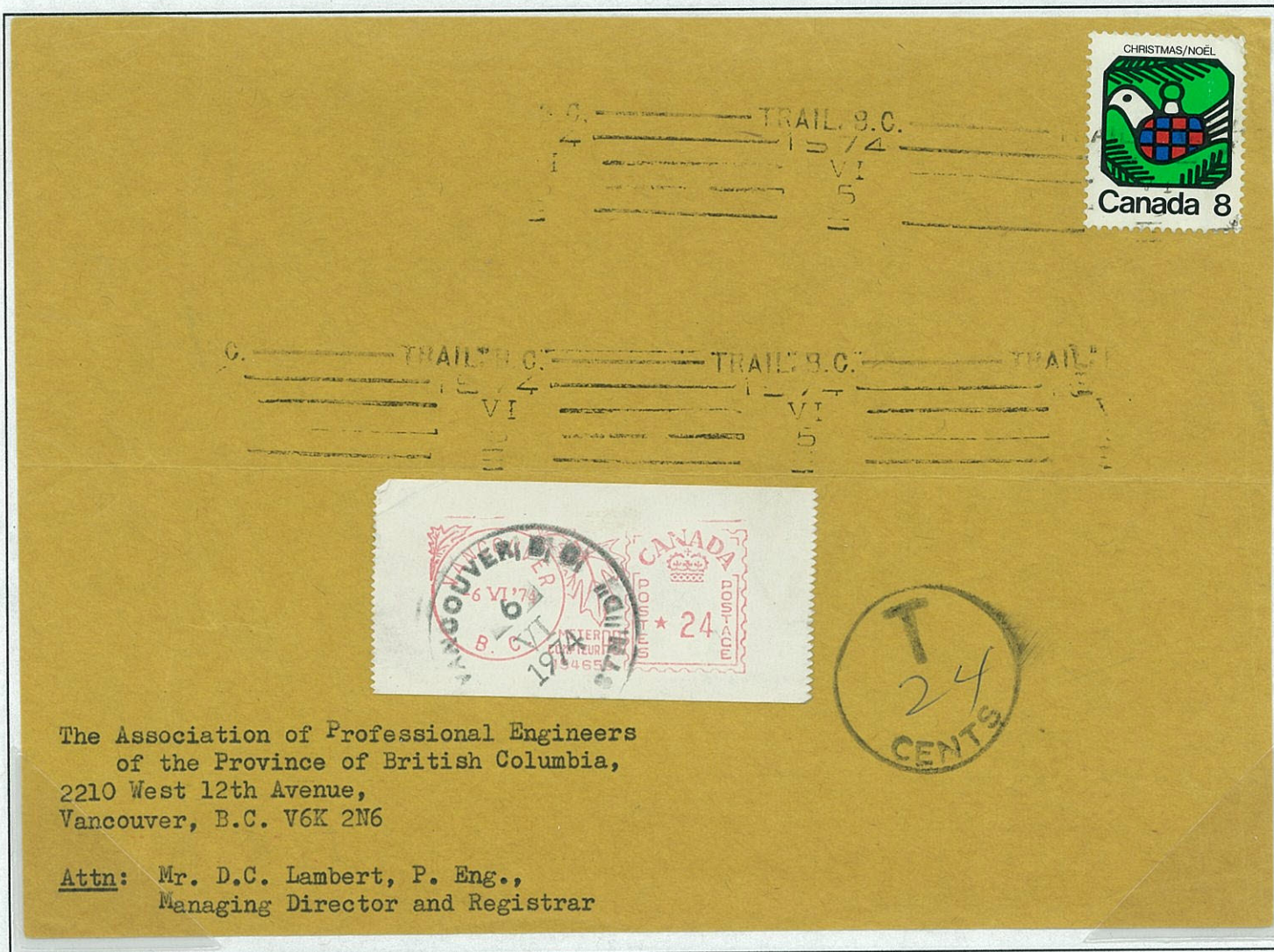


Meters used by postal clerks often (but not always) had the letters "P" and "O" placed in the townmark to the left and right of the date. Eventually the "P" and "O" were eliminated and post office meters became indistinguishable from commercial usage. It is reported that both Pitney Bowes and Neopost meters were used in post offices until the Nixdorf units were introduced in the early 1990's.



Large Maple Leaf PO Meter.
This type was very common.

In the 1970's post office meters became indistinguishable from commercial meters. Here to pay postage due.



The Association of Professional Engineers
of the Province of British Columbia,
2210 West 12th Avenue,
Vancouver, B.C. V6K 2N6

Attn: Mr. D.C. Lambert, P. Eng.,
Managing Director and Registrar