

Exhibit Name

Meter Stamp Society

Author

Richard Stambaugh

Date Donated December 15, 2005

Date Posted: December 15, 2005

Copyright statement:

This exhibit was not copyrighted by the author. However, all materials in the possession of the Meter Stamp Society may not be used verbatim or sold without express written permission.

METER STAMP SOCIETY

WHY WE COLLECT METER STAMPS

1. MOST ARE EASY TO FIND AND VERY LOW COST

... YET THEY CAN BE EXCEPTIONALLY CHALLENGING

2. THE FIELD ABOUNDS WITH RESEARCH OPPORTUNITIES.

3. COUNTRY , THEMATIC AND POSTAL HISTORY COLLECTIONS

ARE INCOMPLETE WITHOUT THEM.



(Some rare meter stamps in this exhibit are represented by facsimiles. They are here to demonstrate that meters have a rich history, not to showcase the stamps themselves.)

THE EARLIEST METER STAMPS



First Experimental
Meter Stamp
1900



First Production
Meter Stamp
1903

Meters have been in use since 1900. The first countries to use them were Norway and New Zealand. Norway installed the first, a coin-operated machine, in the central post office in Kristiania.



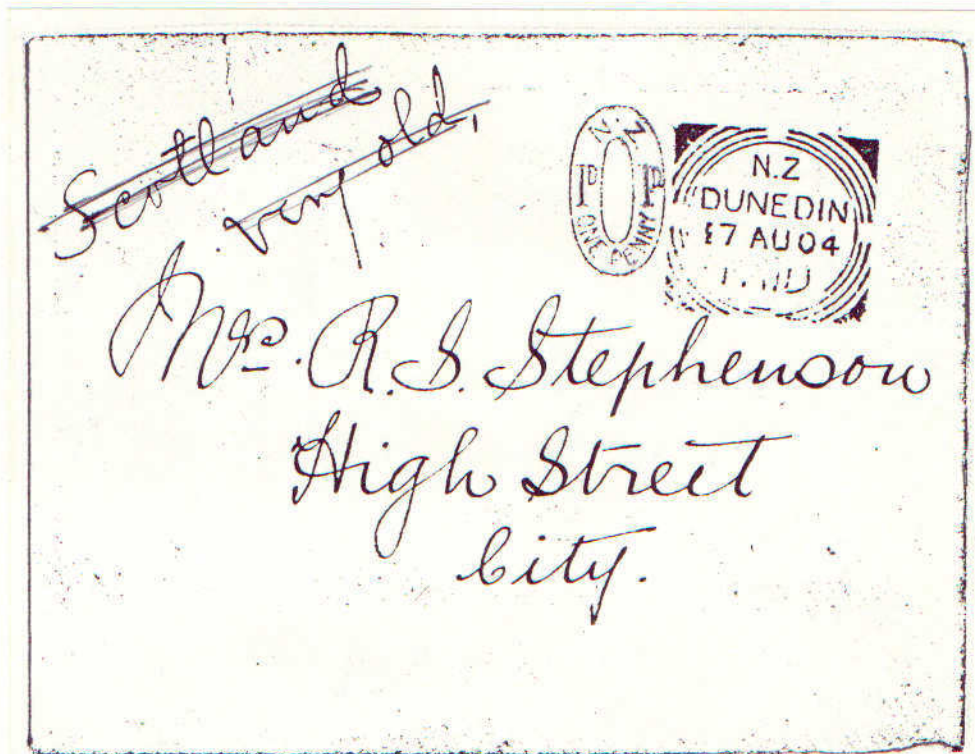
1904



1906



1907



1904

New Zealand followed three years later with another coin-operated meter. Although Norway stopped using meters in 1905 and did not reintroduce them until 1926, New Zealand used them continuously from 1905 onward. During the 1900s and 1910s New Zealand was the only country in the world to use postage meters on a commercial non-experimental basis.

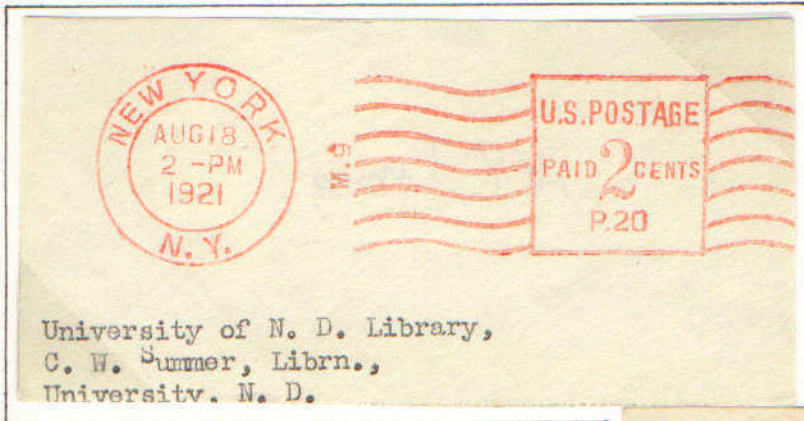
THE FIRST UNITED STATES METER STAMPS

RETURN IN 5 DAYS TO
901 W. VAN BUREN ST.
CHICAGO
Permit No. 1041.



Adv. Manager,
Ivers Johnson Arms & Cycle Wks.,
Fitchburg,
Mass.

The United States experimented with meters in 1912-14 but did not authorize a production machine until 1920. The machine was manufactured by The Postage Meter Company which later changed its name to the Pitney Bowes Corporation.



The first US production design, the so-called square indicia, was soon replaced by the oval design because it too closely resembled common 'postage paid' permit markings of the day.

EARLY U.S. METER STAMPS



2016

J. P. Morgan & Co.



These first meter machines could only print one denomination of postage so a separate meter had to be used for different classes and weights of mail. There was little demand for some of the higher denominations and thus early meter stamps with rates over four cents can be hard to find.

EARLY U.S. POSTAGE METER COMPANIES



Pitney Bowes was the only company to market postage meters in the U.S. until 1924 when the MAILOMETER Company had a machine approved by the Post Office Department. Mailometer stamps had the same oval shape and can be differentiated most easily by the small lines under the "o" of "No" after "PERMIT" and "METER".



In the 1930s several other companies entered the postage meter market. From left to right, top to bottom: INTERNATIONAL POSTAL SUPPLY, CONTINENTAL POSTAGE METER, WHITLOCK METERED MAIL, UNITED STATES POSTAGE METER, MULTIPOST.

ADVANCES IN METER DESIGN

The single value oval design was replaced by more sophisticated meters that could print several different denominations instead of one.



Some types had separate value indicia mounted on one machine.



Others had adjustable value wheels and could print any denomination from 1 cent to 99 cents, \$9.99 or even higher. Today nearly all postage meters in the world are of this latter type.

THE EARLIEST POSTAGE METER SLOGANS

In the U.S. slogan plates were first affixed to postage meters on an experimental basis in the late 1920s. Several oval meters, which could not normally accomodate a slogan, were modified for this test. Three commercial users participated in the test: The Postage Meter Co. (Stamford), Shell Petroleum Corp. (St. Louis), and Curtis Publishing Co. (Philadelphia)

STAGE METER COMPANY
723 PACIFIC STREET
STAMFORD, CONNECTICUT

*X Adhesive
Stamps
are Out-of-date!*



RETURN IN FIVE DAYS TO
SHELL PETROLEUM CORPORATION
ST. LOUIS, MO.



Return Postage Guaranteed
CURTIS PUBLISHING COMPANY
Independence Square
Philadelphia, Pennsylvania

Sec. 562, P. L. & R.

Advertising
aids
Democracy



SECOND GENERATION SLOGANS



The multi-denomination meters that replaced the ovals were the first to have the slogan printing option as a standard feature. Shown here are several of the earliest slogans placed into use.

MODERN SLOGANS

SPACE, SATELLITES AND ROCKETS

Slogans have become one of the most popular specialties in meter philately today. A collection built around one theme can be a significant challenge.

MANUFACTURING COMPANY
in Electronics
4, MASSACHUSETTS

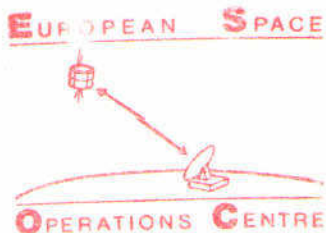
VOICE OF THE SATELLITES !



ED VULTEE AIRCRAFT CORPORATION
POMONA DIVISION
BOX 1011, POMONA, CALIFORNIA



ELECTRIC COMPANY
LION, OHIO



MODERN SLOGANS
PHILATELY AND STAMP SHOWS

SEPAD
AL STAMP EXHIBITION

SEPAD
1939 NATIONAL
STAMP EXHIBITION
SEPT-27 to OCT-1
PHILADELPHIA



27, to OCT.
Hotel Philadelph
and Chestnut St
PHILADELPHIA

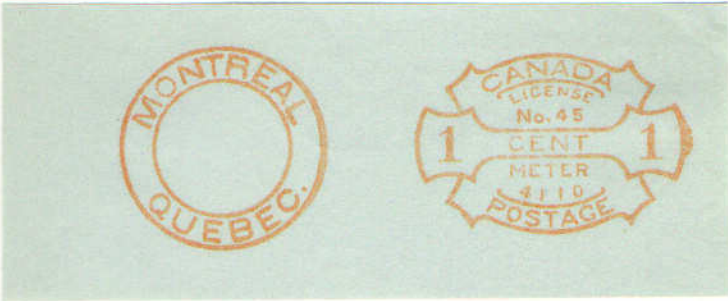


PHILADELPHIA



COUNTRY COLLECTING

Collecting an example of each type of meter stamp from one country is also popular. Some meter types were in use for short periods of time, and stamps with these designs can be a challenge to locate. Shown here are a selection of different meter stamp types from Canada.



le. Esa..



NARROWER SPECIALIZATIONS

POST OFFICE METERS



POST OFFICE



PARCEL POST



US PS



P O

Some collectors have narrower specializations focusing on only one class of meter stamp or even on a single meter type. One specialty popular with collectors today is POST OFFICE METER STAMPS, i.e. meter stamps from machines used exclusively in post offices. In the United States post office meter stamps can be identified by the addition of "P O", "US PS", "POST OFFICE", "PARCEL POST" inside the townmark circle.



Some post office meters are experimental. The stamps above are from three different computerized models tested by the U.S. Postal Service.

NARROWER SPECIALIZATIONS

Other countries also have meters made explicitly for post office use. Several examples are shown here.



CANADA



AUSTRALIA



JAPAN



HONG KONG

AUTOMAT METER STAMPS

Related to Post Office meters are modern automats, the so-called FRAMAs named after the Swiss corporation that introduced the first modern machines in 1976. Automat stamps are really a hybrid between traditional printed stamps and meter stamps. They are not metered per se but the vending machine prints the stamp (either in its entirety or just its denomination) at the moment of purchase. Most FRAMA stamps require postal cancellation as do traditional stamps.



FRAMA



KLUSSENDORF



MATSUSHITA



AUTOPOST



ALMEC

"BACK OF THE BOOK" METER STAMPS

Meter stamps, like traditional stamps, are used for other purposes besides commercial postage.



FISCAL
(Panama liquor tax)

PARCEL DELIVERY SERVICE



(E. Germany) OFFICIAL BUSINESS



(USA)



VALIDATION

METER STAMP SOCIETY



Hopefully this exhibit makes clear the interest, variety and challenge of meter stamp collecting. Perhaps you will want to improve what you already collect by adding meter stamps or maybe you will want to collect them in their own right. If either, you will find the Meter Stamp Society to be of great value. For more information and an application please write to the address below. Annual dues for U.S. residents are \$8 (Canada/Mexico \$10, overseas \$14). There is a \$2 initiation fee.

Secretary, Gabel Pustel
PO Box 1345
Jackson NJ 08527

The Society was founded in 1948.
It currently has 270 members worldwide.